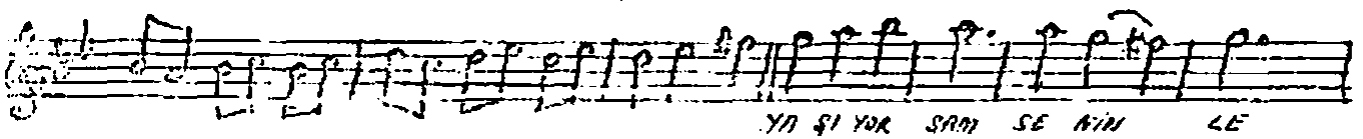
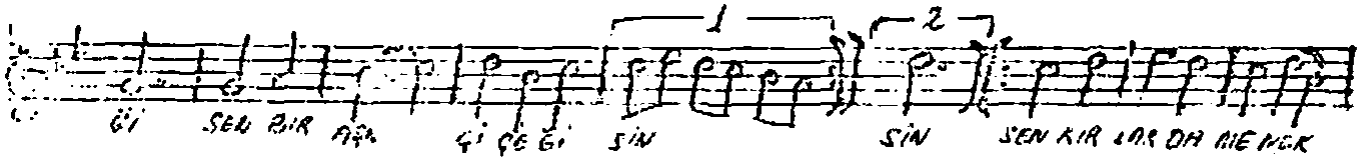
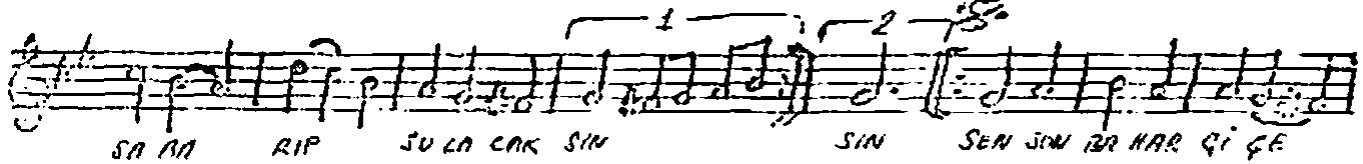
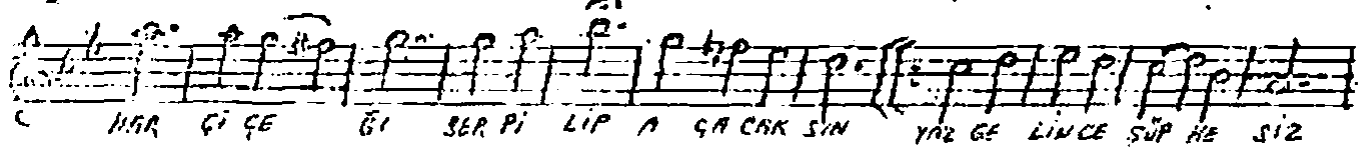
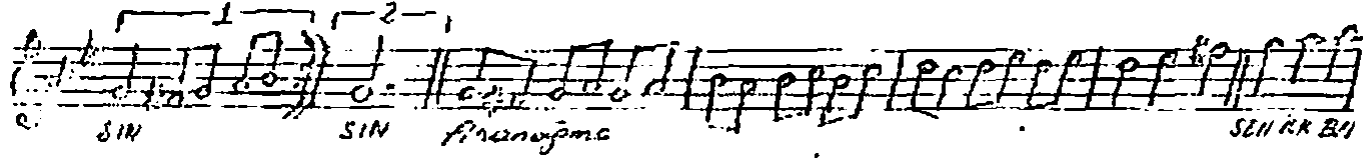
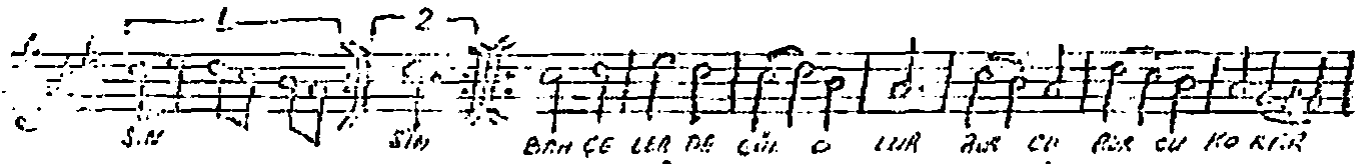
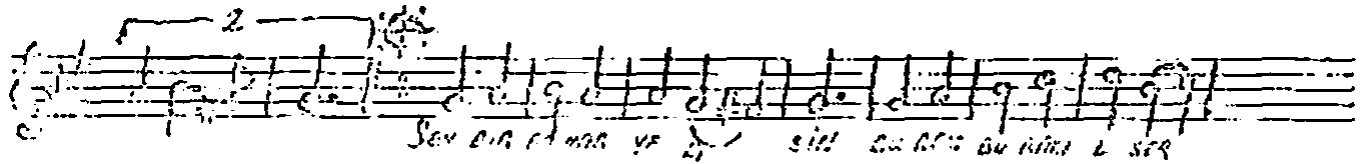
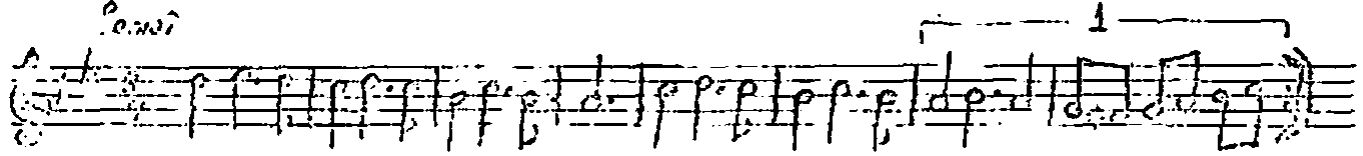


Çellik: Orhan TARMAN
Pöz = İsmet ERDEM

- Nihavent Parkı -

SURE

SEN BİR BAHAR YELİSİN





SEN BİR NİHAR YELİNİN BUCAM KURBANİ ESERSİN
BAHARLILARDA GÜL OLUR BİRLİK BİRLİK KÖKÜRSÜN
SEN İLKBAHAR GİBİ GİBİ SERPİLİP AÇILIRSIN
YER ÇİĞİNGE SÖZÜMÜZ SERRAP SÖZÜMÜZ

SEN SONGARAR GİÇLİ, SEN BİR NİL GİÇLİSİN
SEN KIRLADA BAKARSA KALIRMI DİĞERSİN
YATIRGANSI SENİNLE ÖZÜREN SENSİZLİĞİN
SEN ÜÇÜK ÇİĞİMİN ADIN DA "GİÇ" SENİN

(SARILIKTAN)