

ŞARH: CUI CURMA

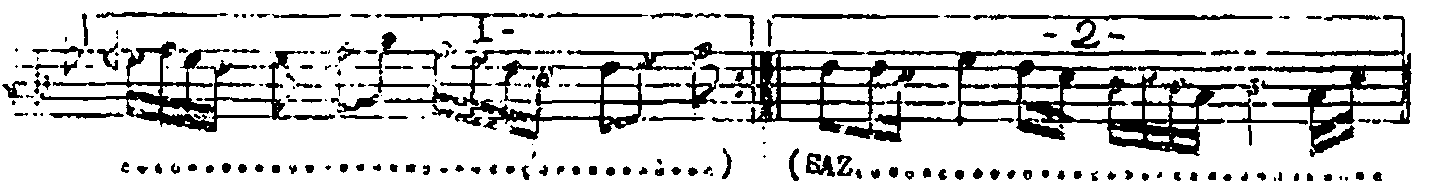
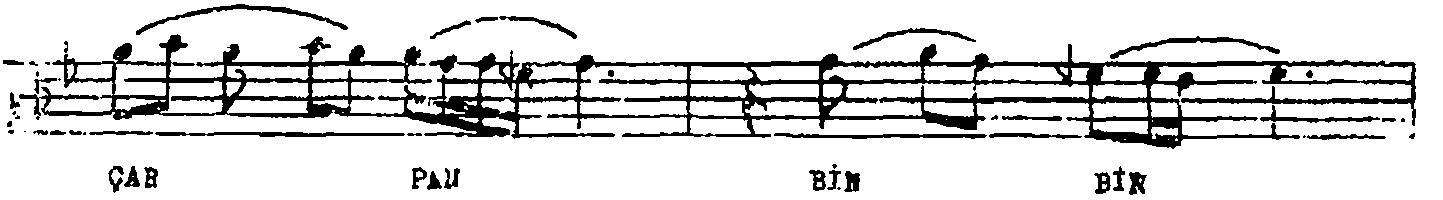
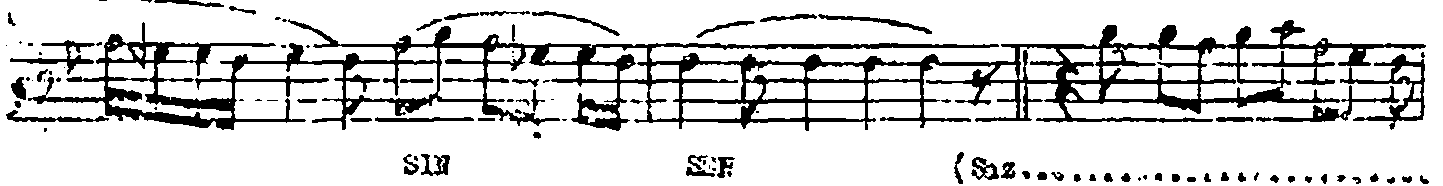
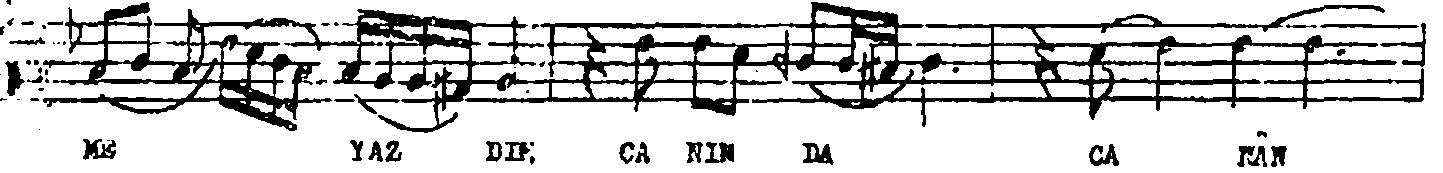
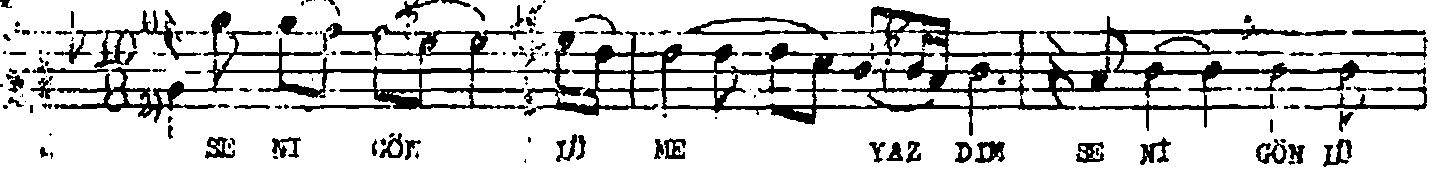
NİHAYEND ŞARKI

BESTE: VEFİK APAÇ

(♩) :160

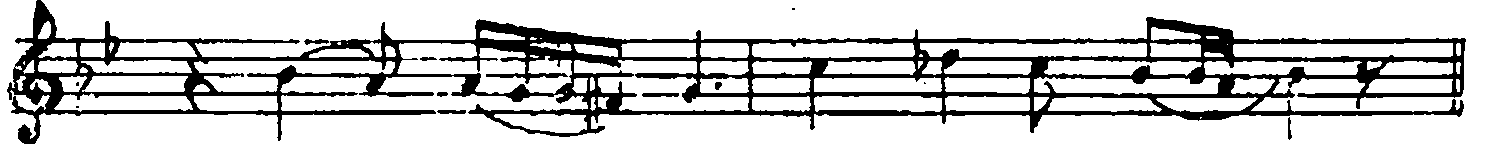
(Seni görmeye yazardım, canında cıvınsın can)

GÖFTE: AHMET İLGAZ





.....) BA FIŞ LA RIN DA SEV DA



TAV RIN DA AY RI E DA



UĞ RU JA ÖN RUM FE DA



CAN DAN ÖZ GE CAN SIN SEN



(SAZ.....) AĞ.

SENİ GÖNLÜME YAZDIM, CANIMDA CÂMÂNSIN SEN
BİL, YÜREĞİNDE ÇARPAN, BİNBİR HEYECANSIN SEN
BAKIŞLARINDA SEVDÂ, TAVRINDA AYRI EDÂ,
ÜRÜNÜ ÖMRÜM FETÂ, CANDAN ÖZGE CANSIN SEN...