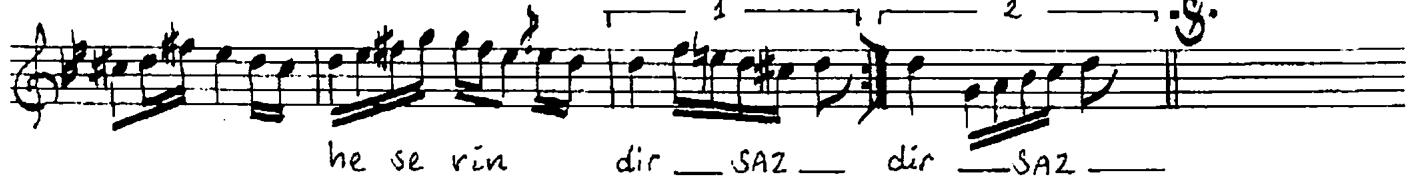
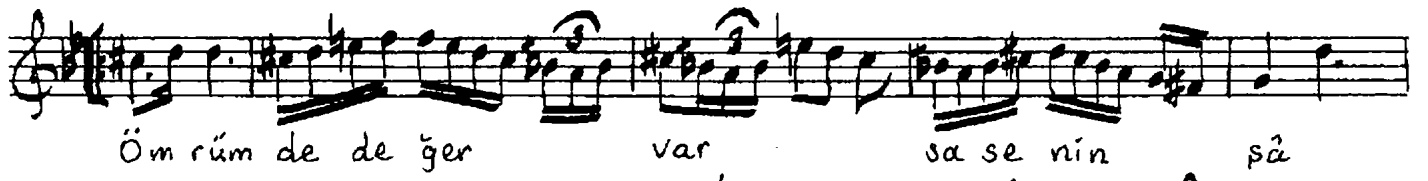
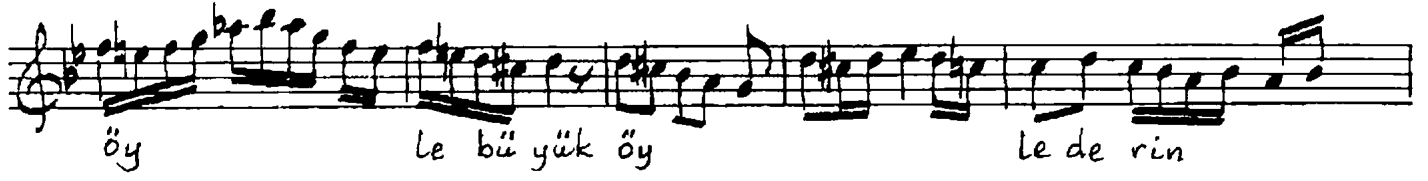


NIHÂVEND ŞARKI

Usûl: Türkaksâğı

Beste: Serif İcili
Güfte: Muhiddin Kutbay



Sensiz yaşamam bil ki bu söz bence yemindir
Rûhumda yerin öyle büyük öyle derindir
Ömrümdedeğer varsa senin şâheserindir
Rûhumda yerin öyle büyük öyle derindir

8.5.2003

— ünyükosak —

CUNEYD KOSAL

