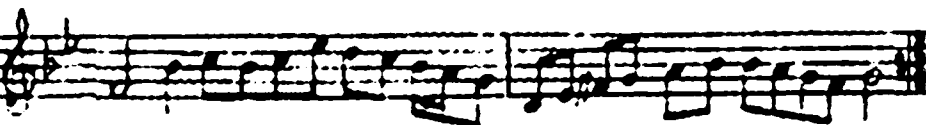
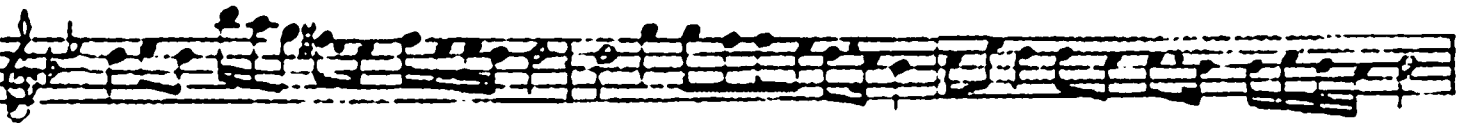
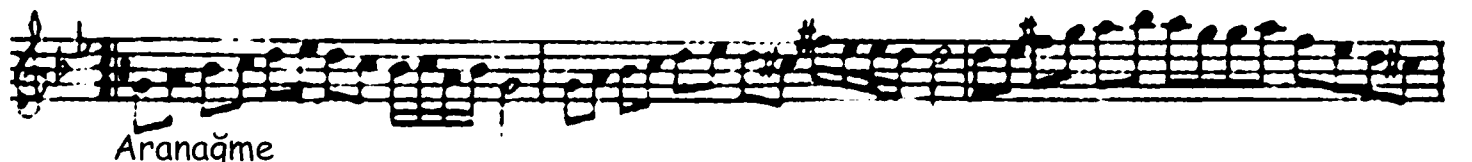
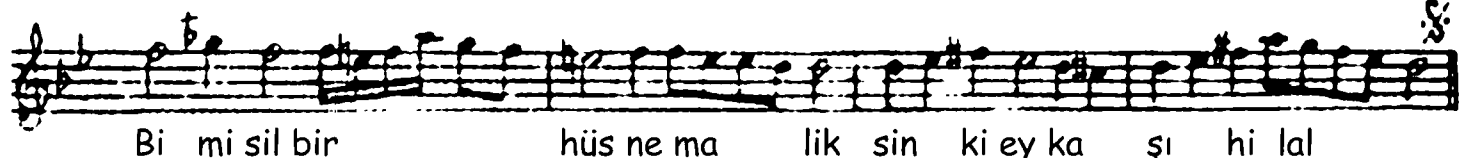
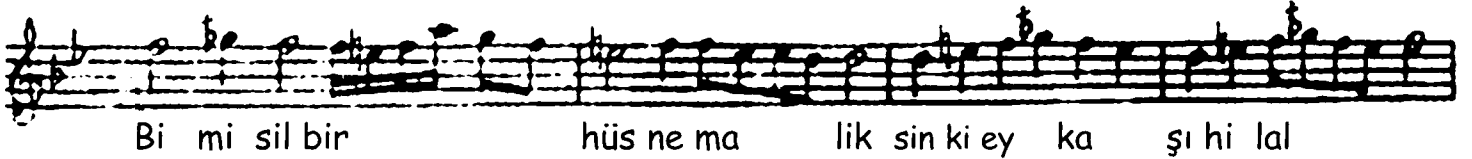
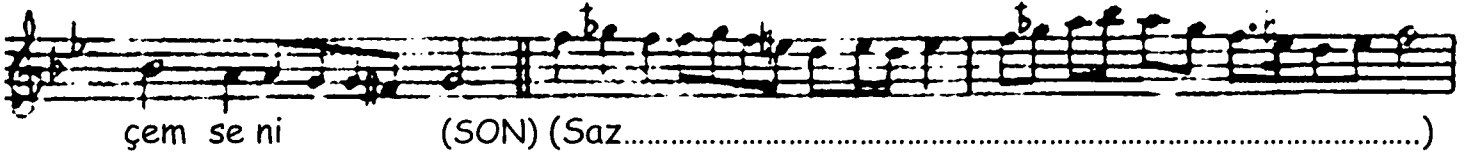
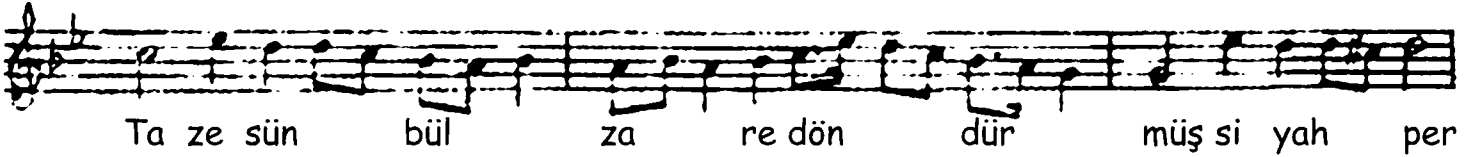
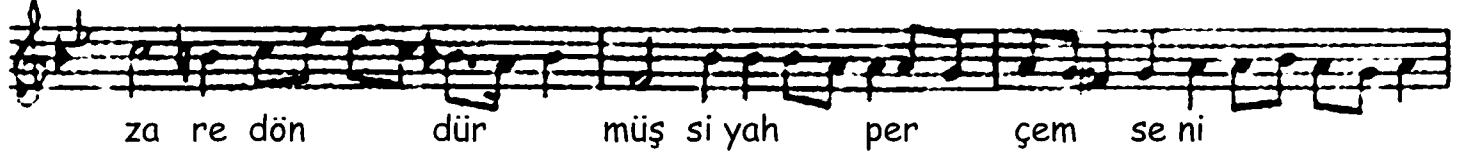
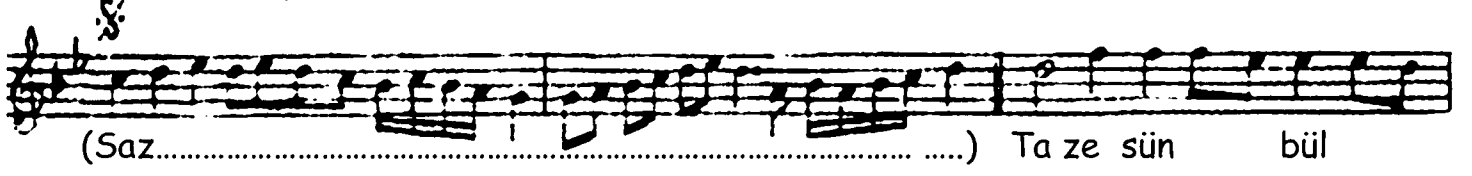
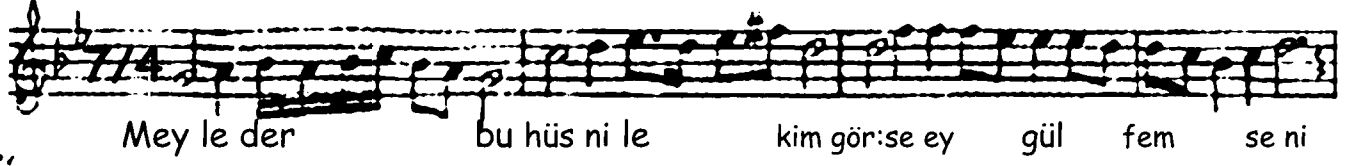


Nihavend Şarkı

Meyleder bu hüsn ile kim görse ey gül-fem seni

Devr-i Hindi (Yürükçe)

Udi Serupe Efendi



Meyleder bu hüsn ile kim görse ey gül-fem seni
Taze sünbülzare döndürmüş siyah perçem seni
Bi-misil bir hüsn maliksin ki ey kaşı hilal
Taze sünbülzare döndürmüş siyah perçem seni

Hüsn: Güzellik
Gül-fem: Gül ağızlı
Sünbülzar: Sünbül bahçesi