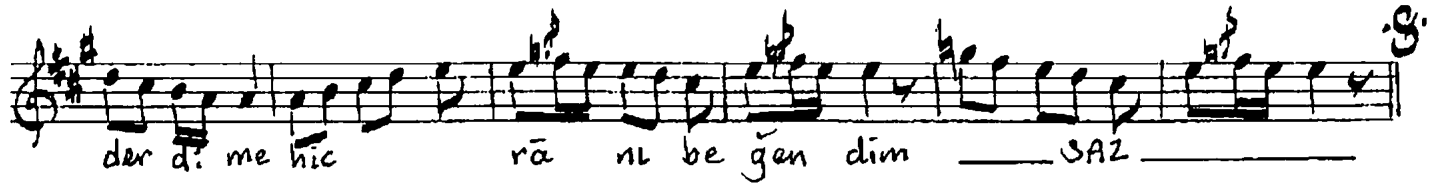
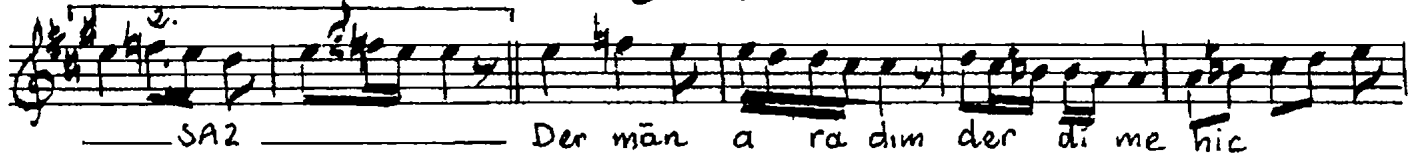
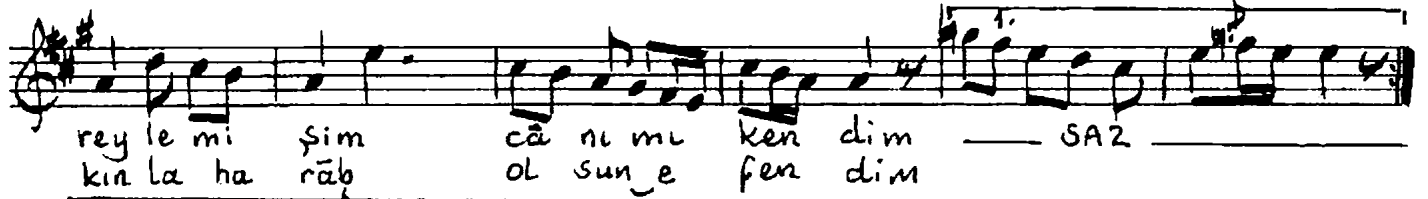
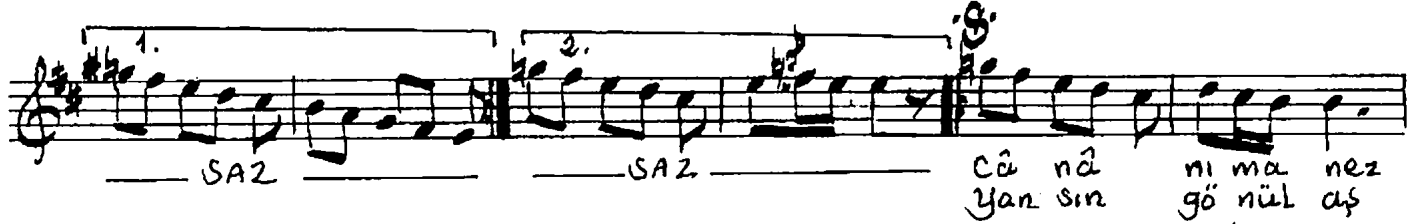
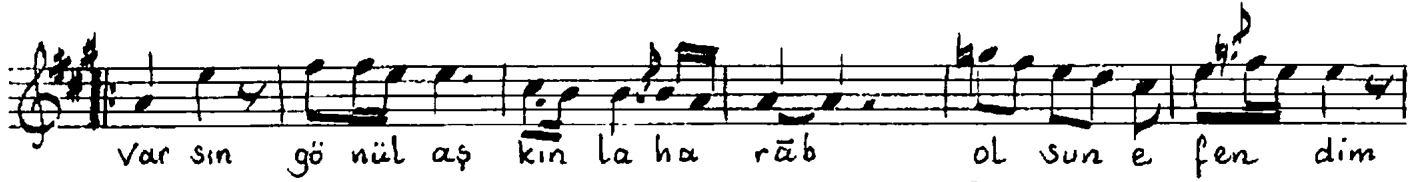


# NIŞABUREK ŞARKI

Usûl : Türkakşağı

Beste : Lem'i Atlı  
Gülte : Vecdi Bingöl



Varsın gönül aşkınla harāb olsun efendim  
Cānānıma nezreylemişim cānımı kendim  
Dermān aradım derdime hicrāni beğendim  
Yanür gönül aşkınla harāb olsun efendim

İstanbul Radyosu Repertuar Kurulu  
notası esas alınarak yazıldı.  
23.4.2006 C. İm. Kosal