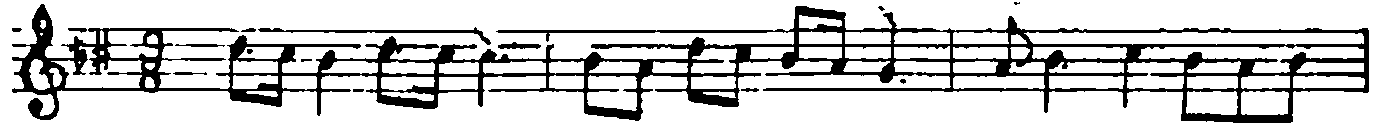


NIKRİZ SAKCI

Şair Fethi Yılmaz, müzikçi Mehmet

BİR VOLKANDAN YOK BİR FARKIM

Usulü: Aksak
♩ = 180



(----- SAZ -----)



-----) BİR VOL KAN DAN



YOK BİR FAR KIM İ GİM ÖY LE Sİ NE DO LU (-- SAZ --)

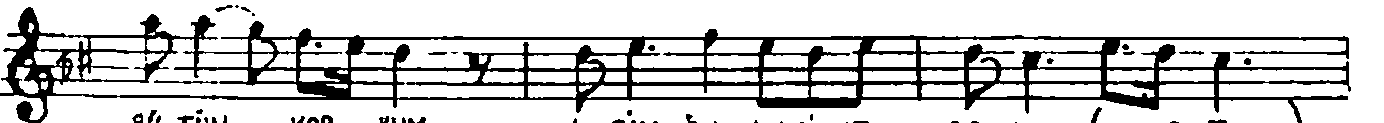


İ GİM ÖY LE Sİ NE DO LU

(----- SAZ -----)



SEN SİZ ÜK TİR
BENİ YAL NIZ



BÜ TÜN KOR KUM İ GİM ÖY LE Sİ NE DO LU (--- SAZ ---)
SEN AN LAR SIN



İ GİM ÖY LE Sİ NE DO LU

(----- SAZ -----)



-----) BEN TOP RA GİM



SEN BA HAR SIN BEN YAG MU RUM SEN Pİ NAR SIN

PI NAR SIN SAZ

1 2

Handwritten musical notation on two staves. The top staff is a vocal line in treble clef with a key signature of one sharp (F#) and a common time signature. It contains the lyrics "PI NAR SIN SAZ" with a long dash under "SAZ". The bottom staff is a piano accompaniment line in treble clef with the same key signature and time signature. It features a first ending bracket labeled "1" and a second ending bracket labeled "2". The piece concludes with a double bar line and a final chord marked with a circled "A".