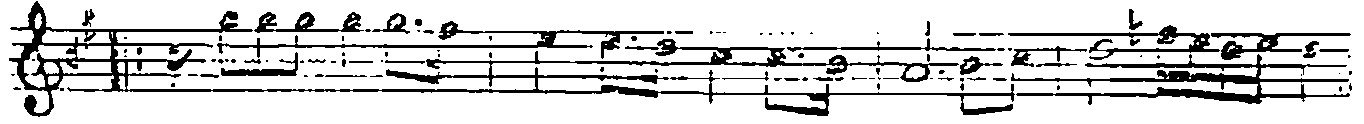
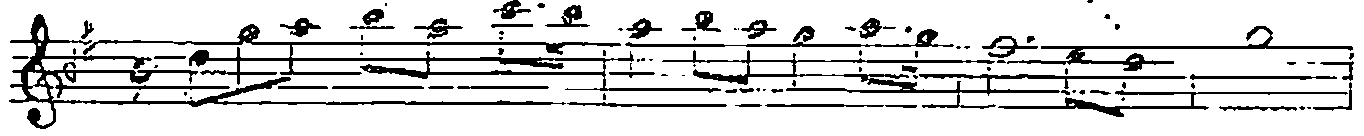


RAST ŞARKI

♩=192  
USÛLÜ: DÜYEK-EVFER

CİLVELİM

MÜZİK: BİLGE ÖZGÜN  
SÖZ: YALÇIN BENLİCAN



-SAZ---



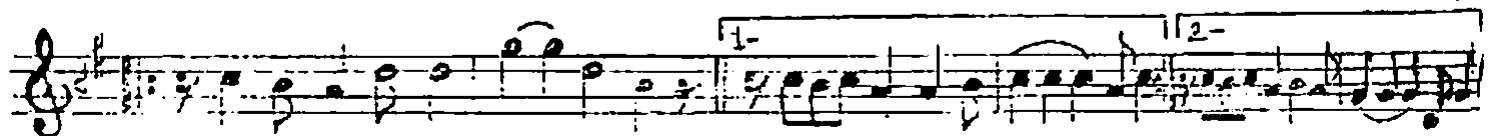
SAÇ LA RIN DÜ ŞÜN CE İ PEK ŞA Cİ NA -SAZ-- AH -SAZ--



AY DO ĞAR GÖNLÜ MÜN -SAZ--- AK ŞAN LA RI NA -SAZ----



BİR ÇİFT MER Hİ SÜR DÜN BA KİŞ LA RI NA (SAZ -----)



GÖZ LE RİN GÜ ZÜN DEK VUR DU -SAZ--- CİLVE LİM SAZ----- CİLVE LİM -SAZ-



BİR AŞ KIN Â TE Şİ VAR O CÜ LÜŞ TE -SAZ--- O NA SIL

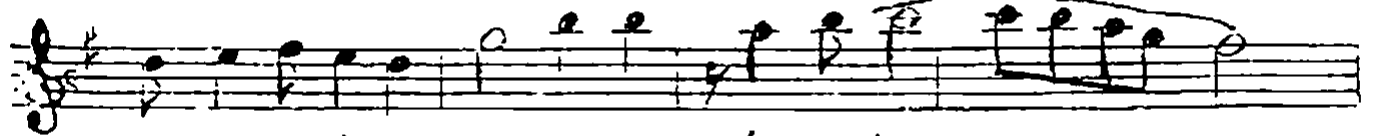
D.C.  
(SON)



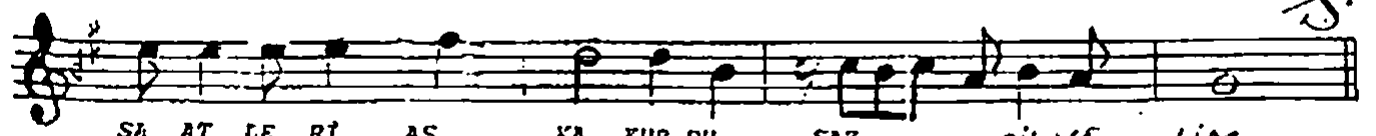
BA KİŞ TİR O NA SIL İŞ VE -SAZ--- VE -SAZ---



TU TUL NAN Dİ YOR DUM TU TUL DUM İŞ TE -SAZ---



SA AT LE Rİ AŞ KA KUR DU CİLVE LİM -



SA AT LE Rİ AŞ KA KUR DU -SAZ--- CİLVE LİM

