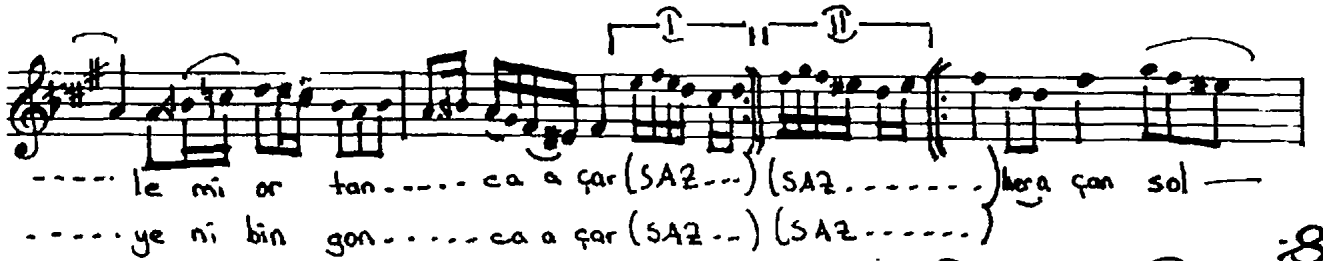
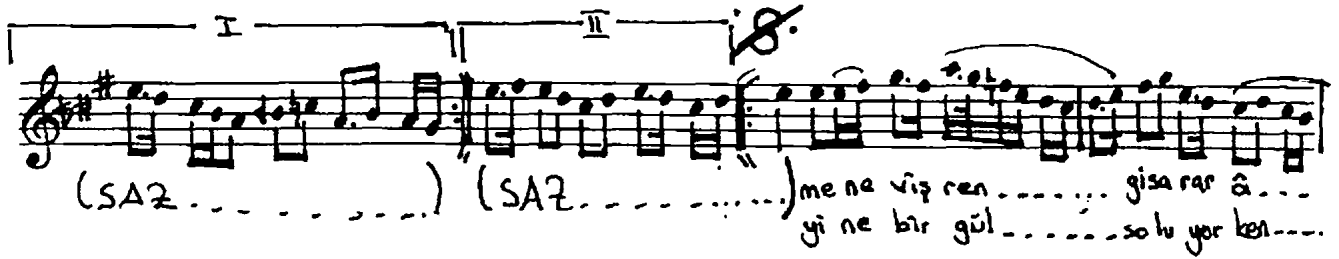
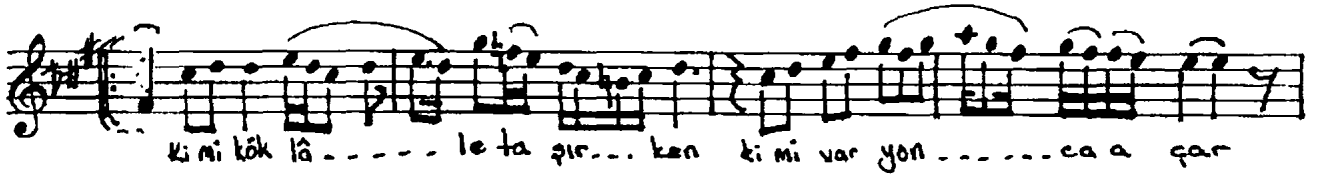
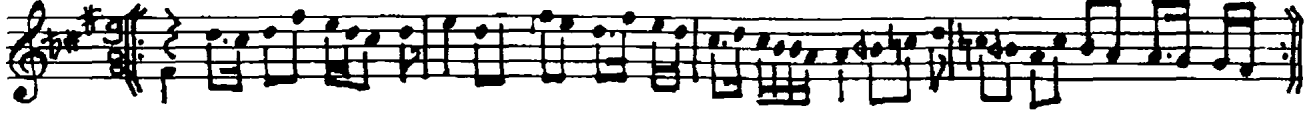


R Â H A T Ü' L E R V Â H
KİMİ KÖK LÂLE TAŞIRKEN

Uslû: Aksak

♩ = 108

Beste: Sadettin Çevik
Güfte: Yasin Hatipoğlu



Kimi kök lâle taşırken, kimi var yonca açar
Meneviş rengi sarar âlemi ortanca açar
Her açan solmaya namzet, güne can müjdesidir
Yine bir gül soluyorken, yeni bin gonca açar