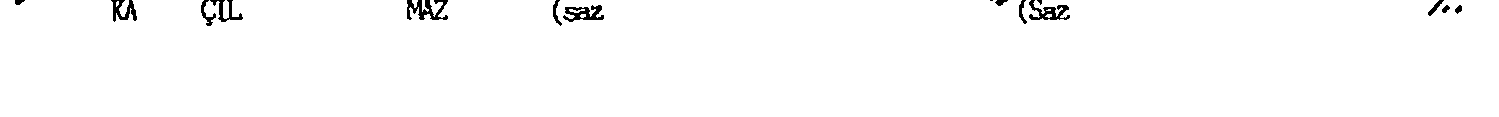
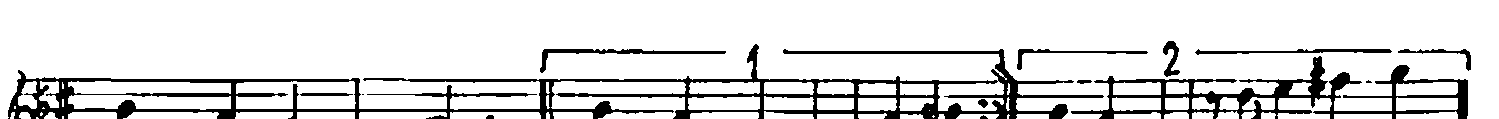
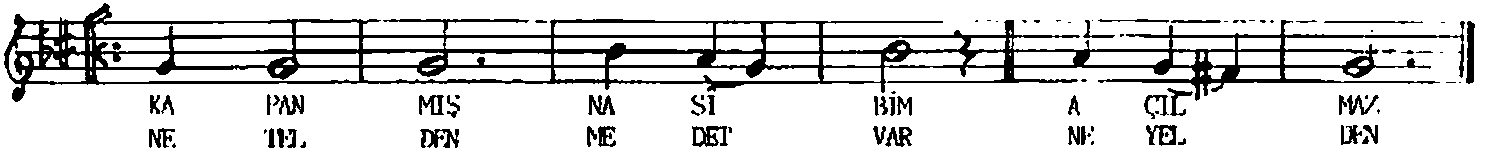
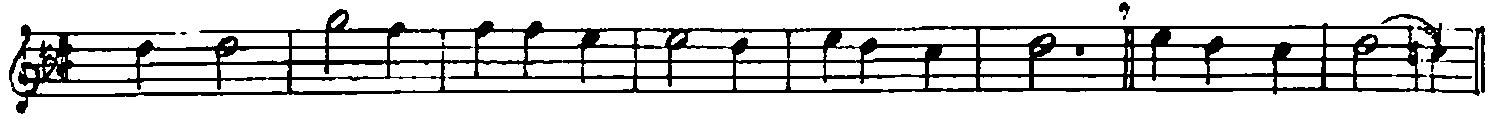
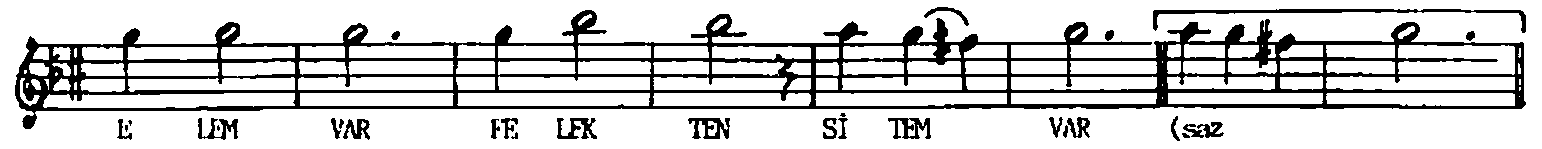


SEMÂÎ (Ağır)  
( ̣ : 120 )

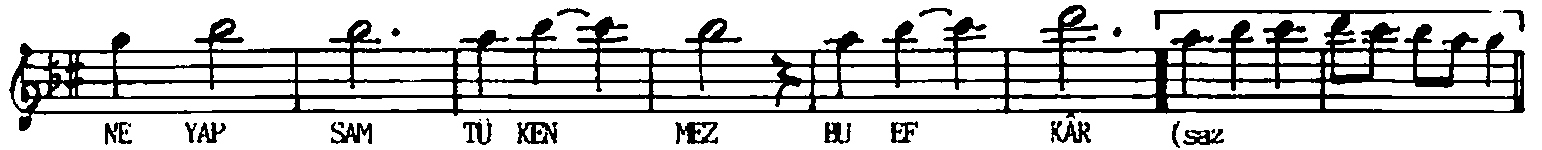
N İ K R İ Z  
Kapanmış nasibim, açılmaz

Beste: ERDİNÇ ÇELİKKOL  
Güfte: Mehmet Turan YARAR





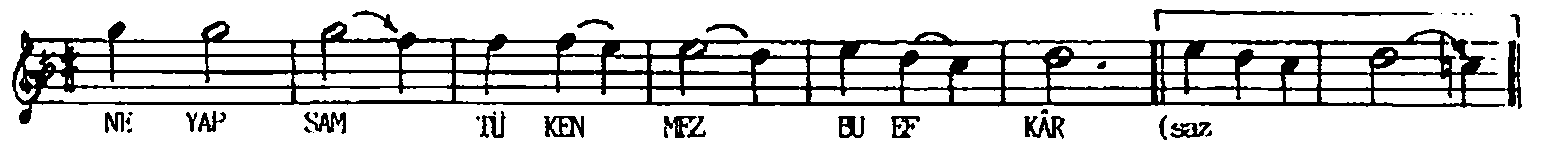
E LEM VAR FE LEK TEN Sİ TEM VAR (saz)



NE YAP SAM TÜ KEN MEZ BU EF KÂR (saz)



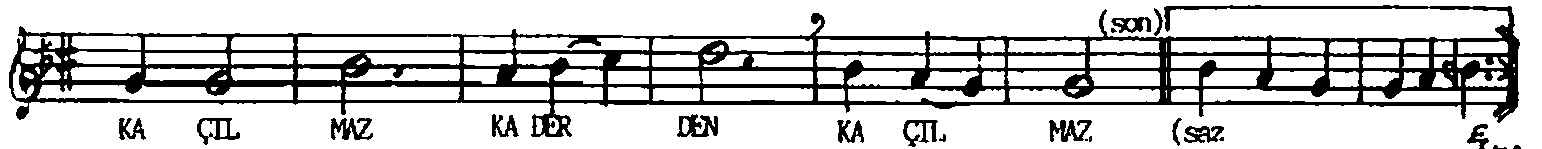
E LEM VAR FE LEK TEN Sİ TEM VAR (saz)



NE YAP SAM TÜ KEN MEZ BU EF KÂR (saz)



DA ĞİL MAZ KA RAN LİK BU LUT LAR (saz)



KA ÇIL MAZ KA DER DEN KA ÇIL MAZ (saz)

KAPANMIŞ NASİBİM, AÇILMAZ.  
SEMĀDAN, SA'ĀDET SAÇILMAZ.  
GEREKSİZ DİDİNMEK, DİRENMEK  
KAÇILMAZ KADERDEN, KAÇILMAZ.

NE TELDEN MEDET VAR, NE YELDEN  
İNANMAK GEREKTİR, TEZ ELDEN  
BU KĀNUN YAZILMIŞ, EZELDEN  
KAÇILMAZ KADERDEN, KAÇILMAZ.

ELEM VAR FELEKTEN, SİTEM VAR  
NE YAPSAM TÜKENMEZ, BU EFKÂR  
DAĞILMAZ KARANLIK BULUTLAR  
KAÇILMAZ KADERDEN. KAÇILMAZ.