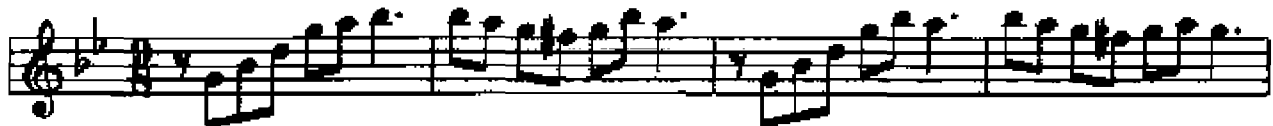


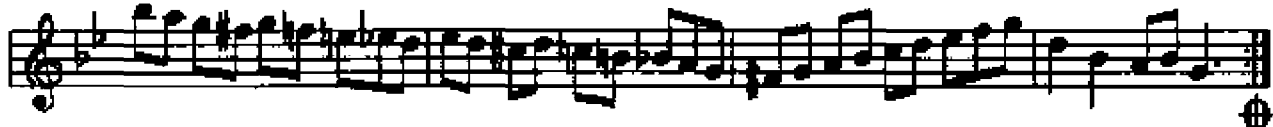
## YILDIZLARDAN BİR TAÇ SANA

İsmail ÖTENKAYA

♩ = 200 (6' 52'')



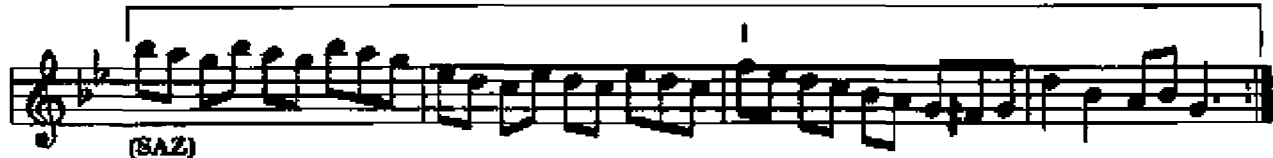
(ARANAĞME)



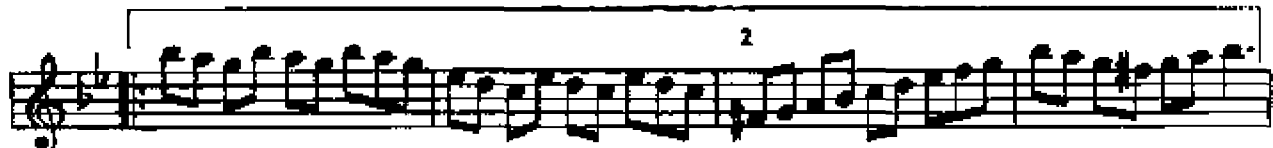
YIL DİZ LAR DAN BİR TAÇ SA NA AY VE GÜ NEŞ VUR GUN SA NA



TÜ M SE V Gİ LER SEN DEN YA NA AN LA SA NA AN LA SA NA



(SAZ)



(SAZ)



GÖ Z LE Rİ MİZ BUL U ŞUR KEN KAL PLER İ MİZ TUT U ŞUR KEN



KU Ş LAR İ LE SE Vİ ŞİR KEN AN LA SA NA AN LA SA NA (son) D.C.



BE Nİ DİN LE İ Kİ GÖ ZÜ M SÖ Y LE YE CEK YOK Kİ SÖ ZÜ M



AN LA TI YOR İ Kİ GÖ ZÜ M AN LA SA NA AN LA SA NA

The image shows a musical score for the song 'ANLASANA'. It consists of two staves of music. The first staff is labeled '(SAZ)' and the second staff is also labeled '(SAZ)'. The second staff has a bracket above it with the number '2' inside, indicating a second ending. The music is written in a treble clef with a key signature of one flat (B-flat) and a 2/4 time signature. The score ends with a double bar line and a repeat sign.

### ANLASANA

YILDIZLARDAN BİR TAÇ SANA  
AY VE GÜNEŞ VURGUN SANA  
TÜM SEVGİLER SENDEN YANA  
ANLASANA, ANLASANA...

GÖZLERİMİZ BULUŞURKEN  
KALPLERİMİZ TUTUŞURKEN  
KUŞLAR BİLE SEVİŞİRKEN  
ANLASANA, ANLASANA...

BENİ DİNLE İKİ GÖZÜM  
SÖYLEYECEK YOK Kİ SÖZÜM  
ANLATIYOR İKİ GÖZÜM  
ANLASANA, ANLASANA...

İsmail ÖTENKAYA