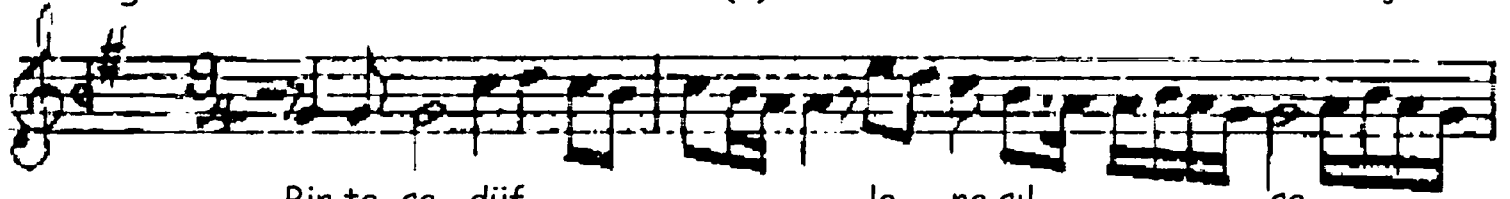


Bir tesadüfle nasılsa sevdi gönlüm pek seni

Ağır Aksak

(1)

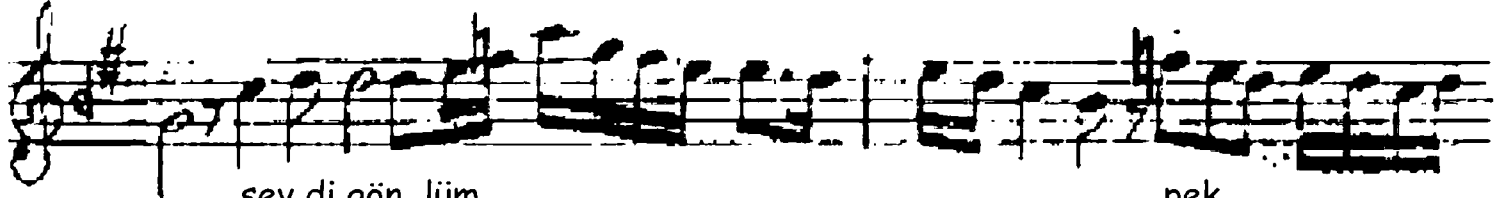
Bimen Şen



Bir te sa düf

le na sıl

sa



sev di gön lüm

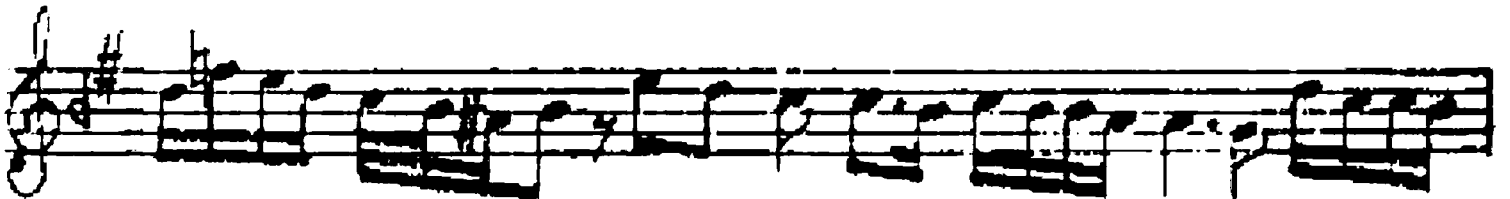
pek



se ni (Saz.....)

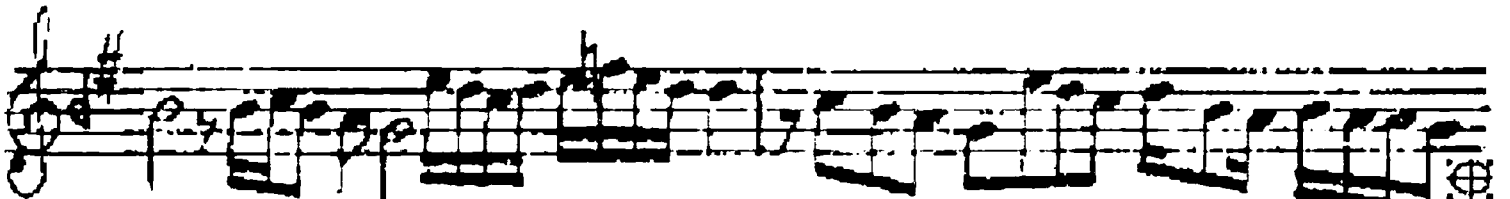
Mis li ni

in



san da gör

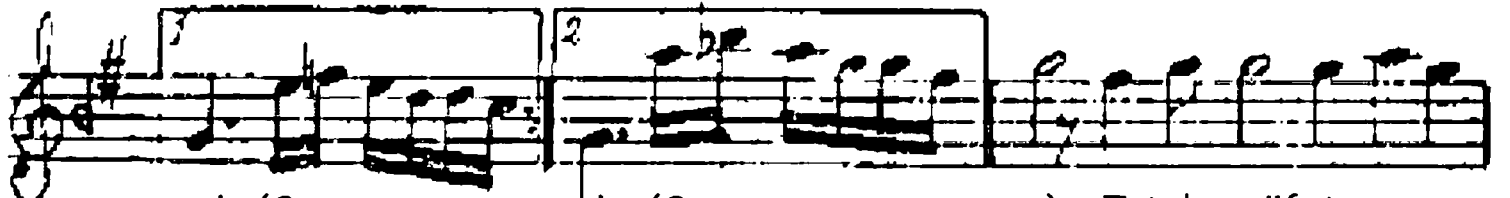
mem



ol sa da mut

lak

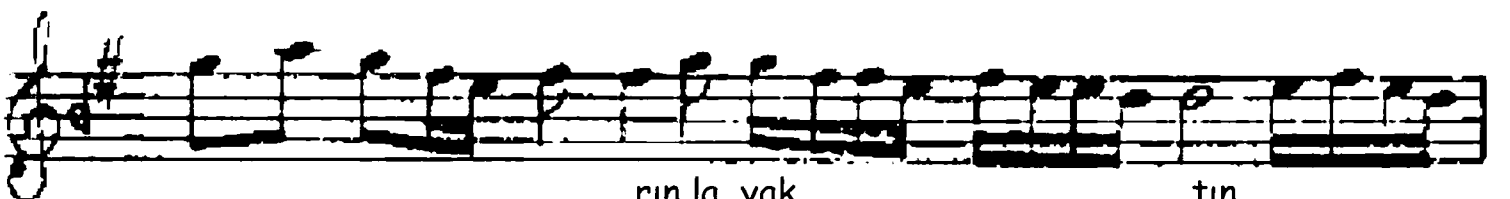
pe



ri (Saz.....)

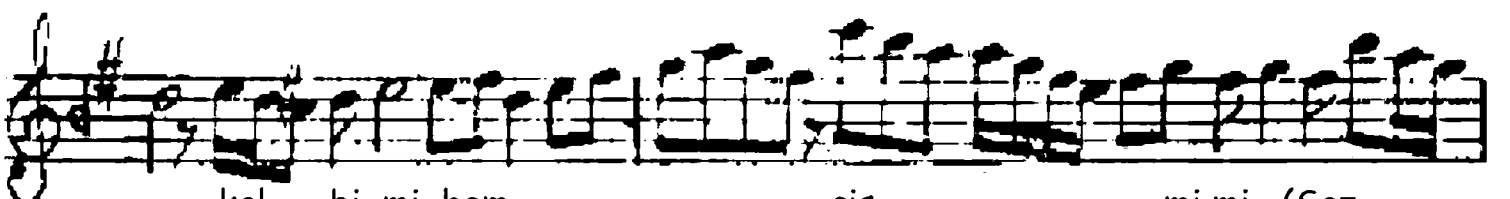
ri (Saz.....)

Tat lı güf ta



rın la yak

tın



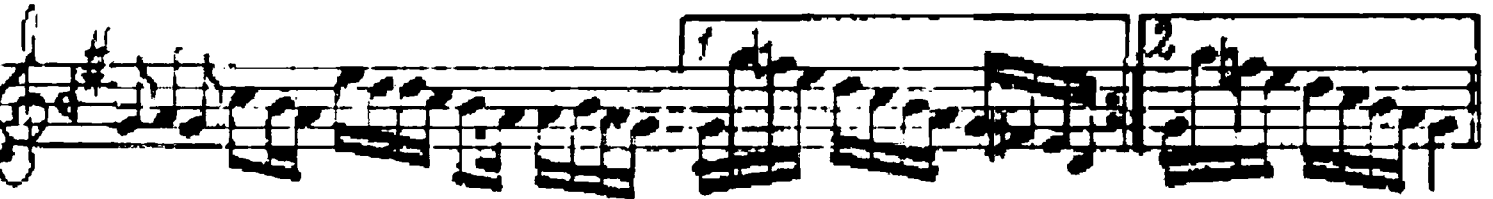
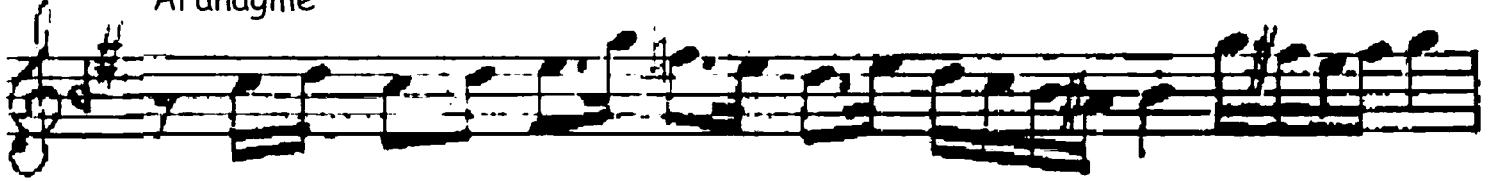
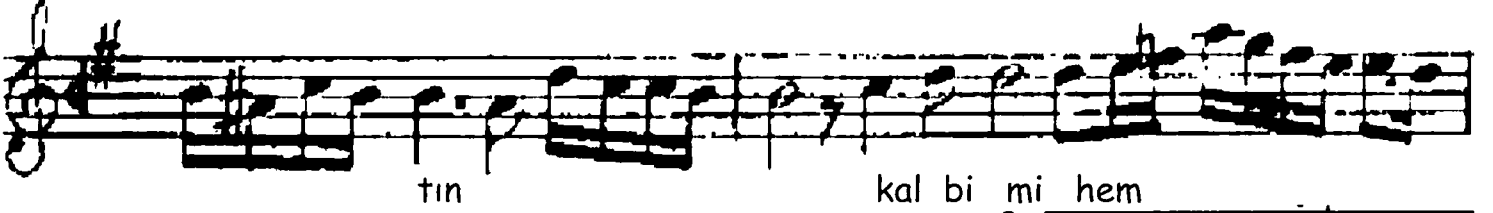
kal bi mi hem

cis

mi mi (Saz.....)

Bir tesadüfle nasılsa sevdi gönlüm pek seni

(2)



Bir tesadüfle nasılsa sevdi gönlüm pek seni
 Mislini insanda görmem olsa da mutlak peri
 Tatlı güftarınla yaktın kalbimi hem cismimi
 Mislini insanda görmem olsa da mutlak peri

Kim görüp de sevmemiştir sen gibi bir gül-teri
 Aşıklarla sevdirep ağlatmanın var mı yeri
 Hiç değilse bir tebessümle sevindir bendeni
 Mislini insanda görmem olsa da mutlak peri