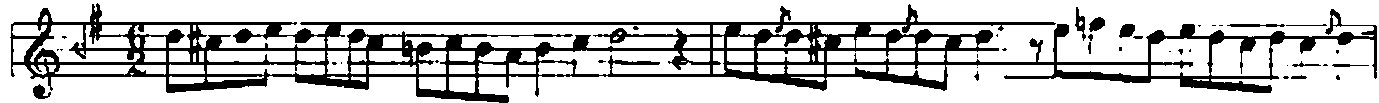


PENCÜGÂH MAKAMINDA KÂR

A. Sengin semai

Gulâm Şadî

♩ = 44



İley ————— te te ten te — ne — ne — ne — nen nen — nen ————



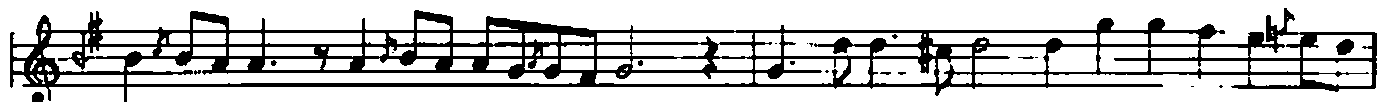
— ni dir ——— lâ ——— lâ ————— te te ten



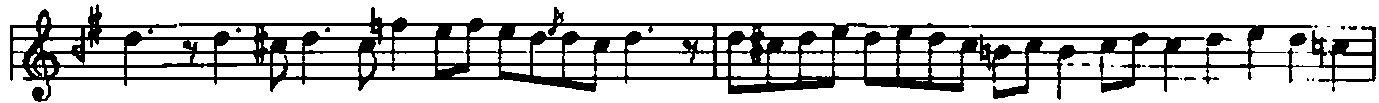
te — ne — ne — ne — nen nen ———— ni dir ——— lâ ——— lâ ————



————— te ——— ne ——— dir ——— te ——— ne ——— ne ——— dir ———



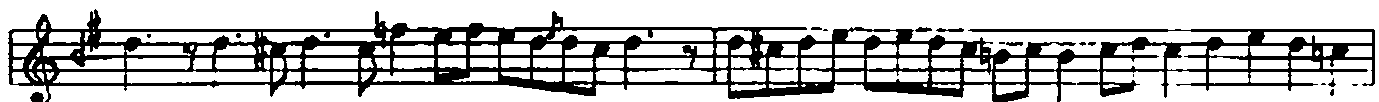
————— be — to ——— se ——— na Ey — an — ki — to — der ———



nü cüm' ——— a il ——— met ——— ha ——— nend



Der — hûk — mi nü — cüm ———



————— mûs' ——— te ki ——— met ——— ha ——— nend ———



————— Ba an — ki bi — da ———



ni ——— zi nü cü ——— met ——— ha be ri ———



————— ha be ri ——— ha be ri ———



l.a yık ki se ri mü nec' ci mi



net ba nend



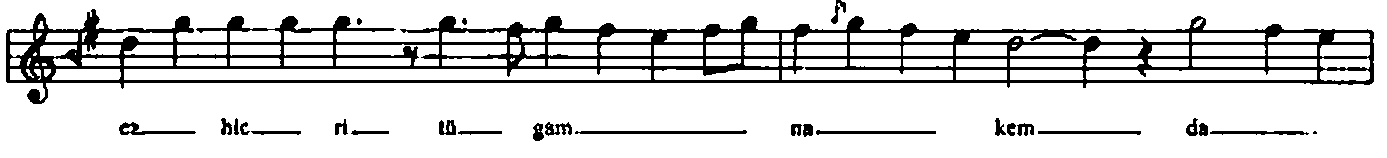
E zin cä yi di la ra yi



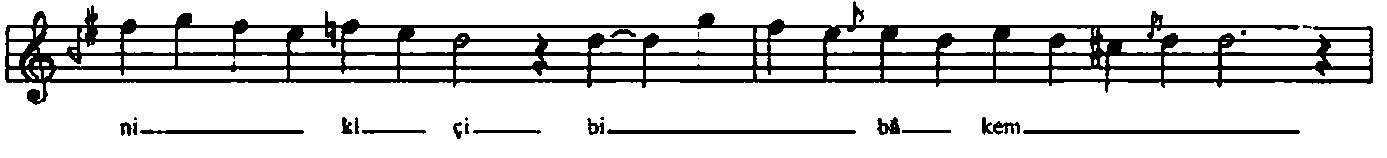
ey hüs ni kü şa de vey



ru yi tü sa de ah



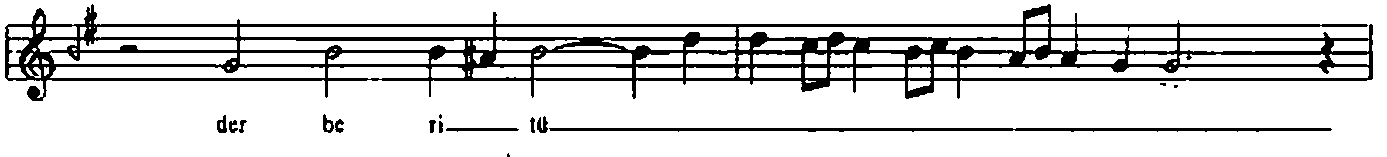
ez hic ri tü gam na kem da



ni kl çi bi bâ kem




hâ hem ki li ba si zer bü ved



der be ri tü



Bâ şed be gü lä bi ter be her çä ke ri tü



En güş tü ze nend be di de i düş me ni tü Çeş meş be bi ron a re dü