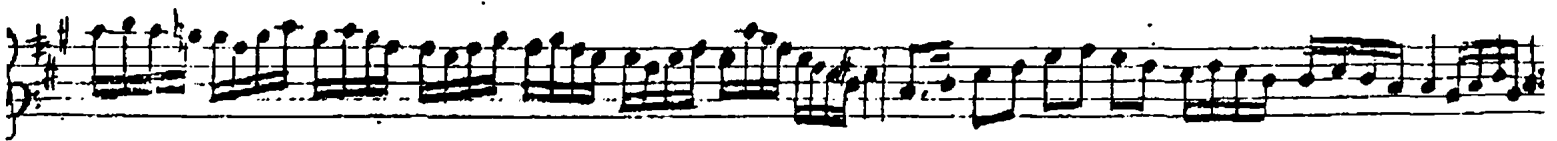
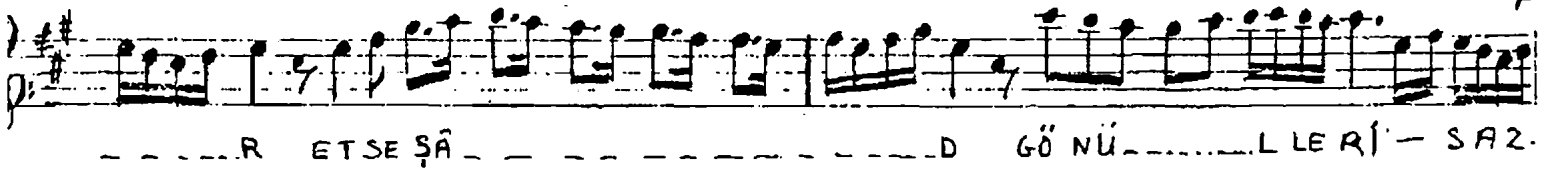
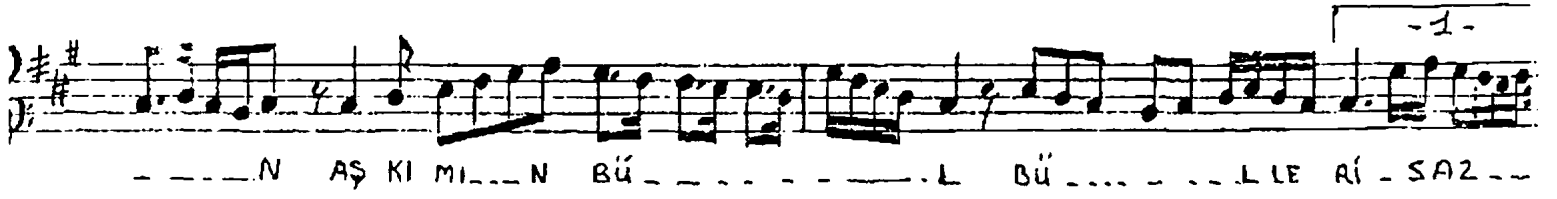
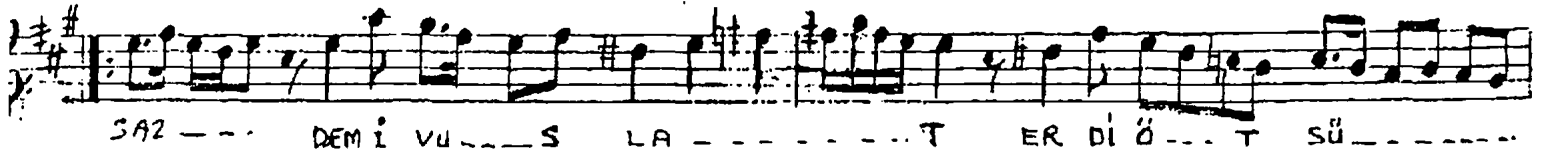
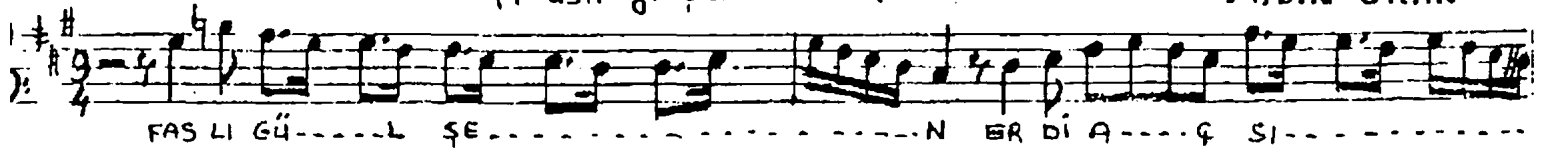


Ağır Aksak

NIŞABUREK ŞARKI
(Faslı gülşen erdi aşsın)

Güfte ve Beste
AYDIN ORAN



FASLI GÜLŞEN ERDİ AŞSIN KALBİMİN SON GÜLLERİ
DEMİ VUSLAT ERDİ ÖTSÜN AŞKIMIN BÜLBÜLLERİ
ÇALSA SAZLAR DÖNSE MEYLER ETSE ŞÂD GÖNÜLLERİ
DEMİ VUSLAT ERDİ ÖTSÜN AŞKIMIN BÜLBÜLLERİ