

NIŞÂBÜREK ŞARKI

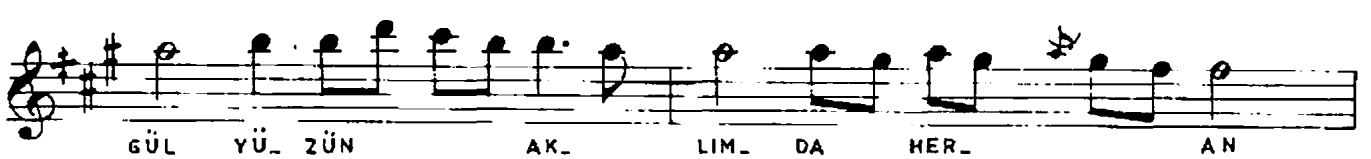
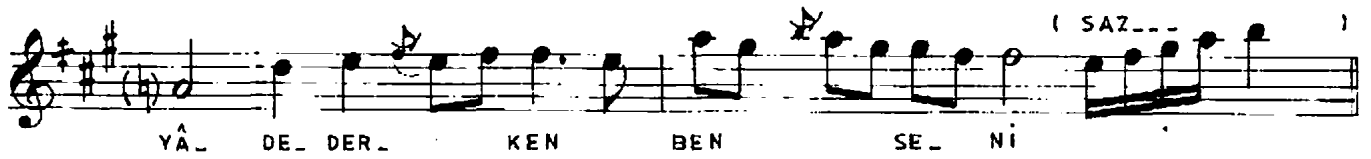
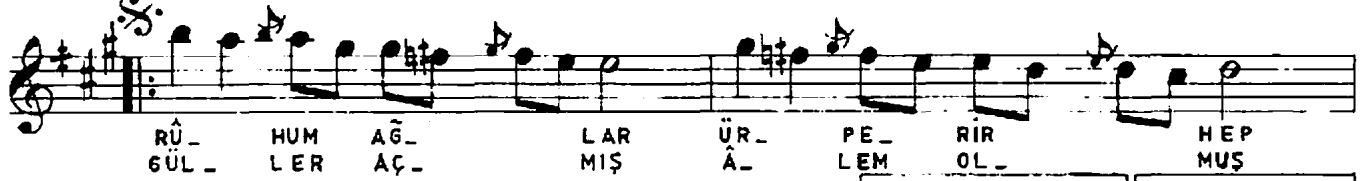
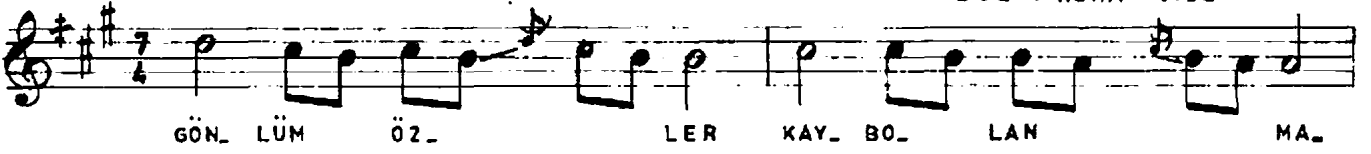
♩ = 84

SÜRE : 2,40' GÖNLÜM ÖZLER KAYBOLAN MANÂLİ MAHZÜN ÇEHRENİ

DEVİR-İ HINDÎ

MÜZİK: ERDİNÇ ÇELİKKOL

SÖZ : REHA GİZEY



GÖNLÜM ÖZLER KAYBOLAN MANÂLİ MAHZÜN ÇEHRENİ
RÜHUM AĞLAR, ÜRPERİR, HEP KISKANIRKEN NEŞ'E Nİ
GÜL YÜZÜN AKLIMDA HER AN. YÂDEDERKEN BEN SENİ
GÜLLER AÇMIŞ, ÂLEM OLMUŞ NEŞ'EDEN MEST, NEYLEYİM

canbaba