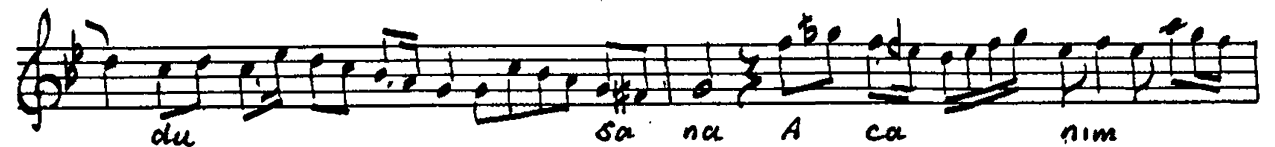
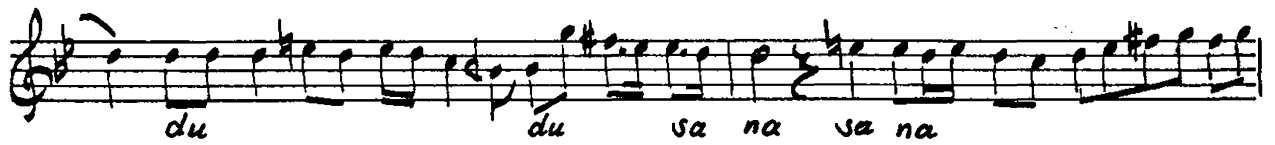
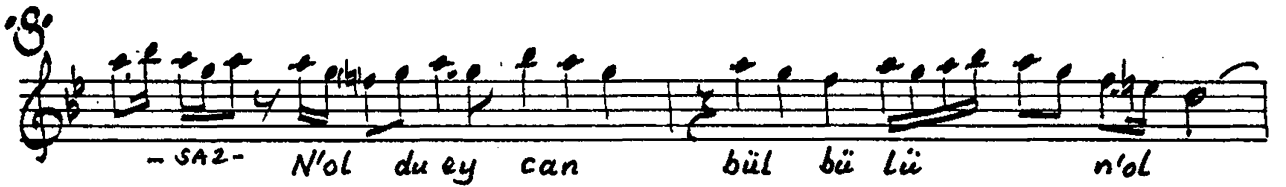


Ustâ Ağıraksak

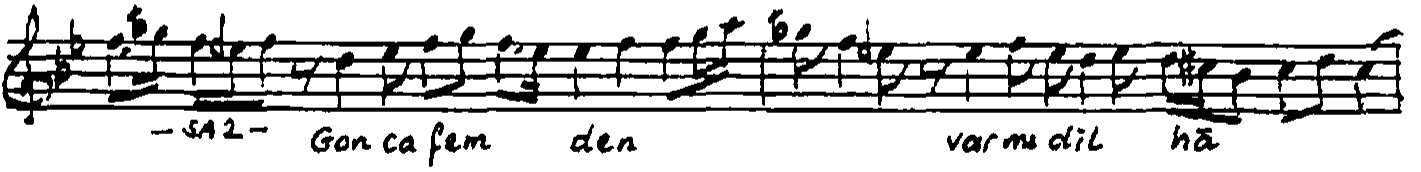
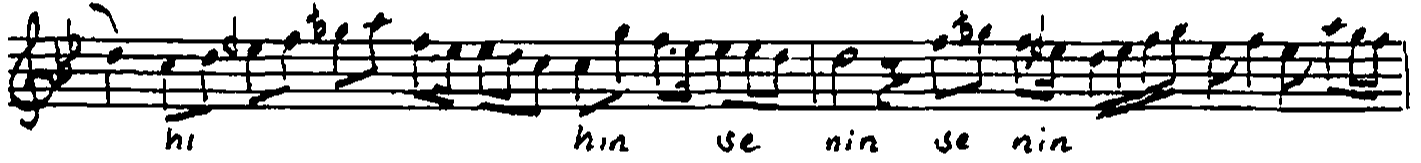
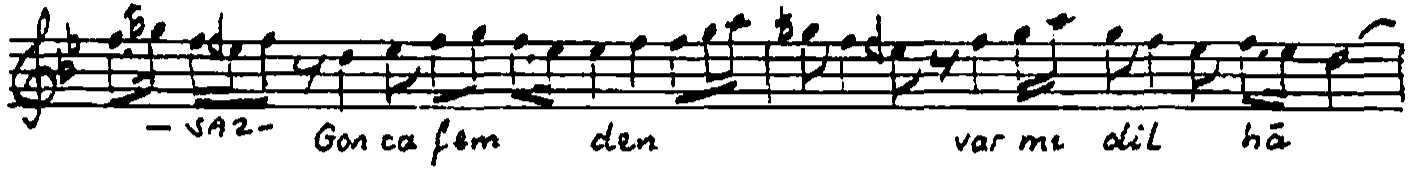
NİHÂVENDİKESİR SARKI

Zekâî Dede



NİHÄVENAİKESİA ŞARKI (Devamı)

Zekâi Dede



Hicr-i gül-ruhdan midir âhin senin
N'oldu ey can bülbülü n'oldu sana
Gonca-femden var mı dil-hâhin senin
N'oldu ey can bülbülü n'oldu sana

Df. 171/464-465

Muallim İsmail Hakkı Beyin TRT. dâki
Kolleksiyonundan yazıdır.

İsmail Koral