

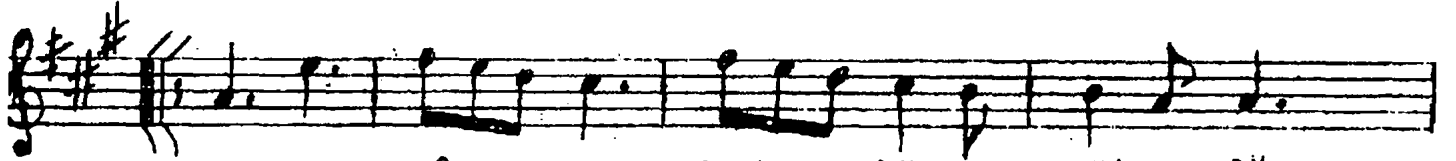
Yürük Semâî

NİŞABURK ŞARKI
(Mest-i nâzım kim büyütüdü)

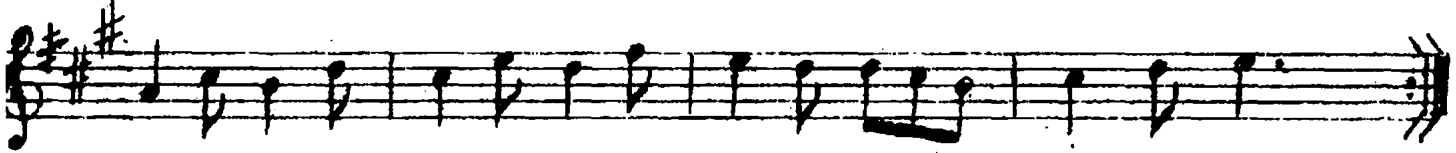
Baste: Ziya Paşa

Güfte: Nedîm

#Aranağmesi)



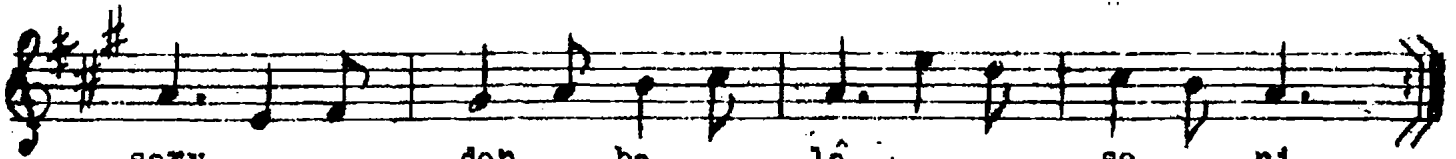
Mest-i nâzım kim büyütüdü



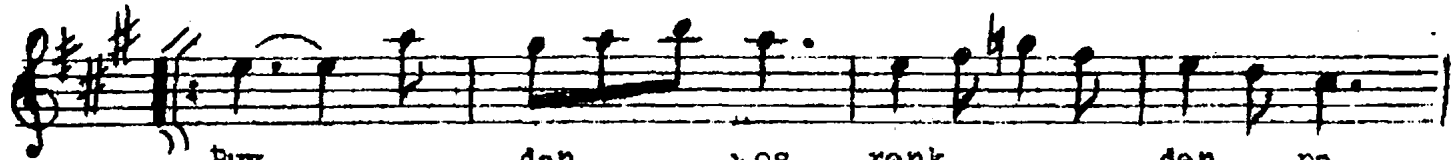
böyle bi-perve seni



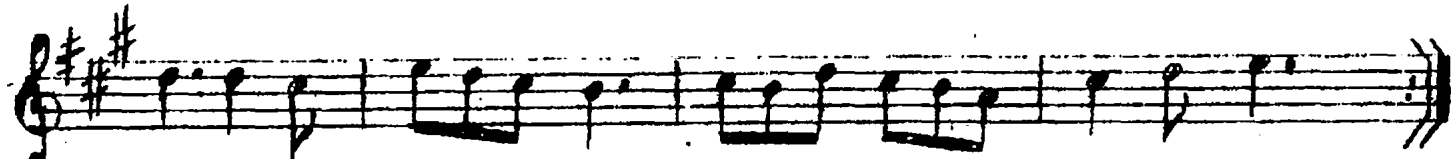
Kim yettirdi bu günâ



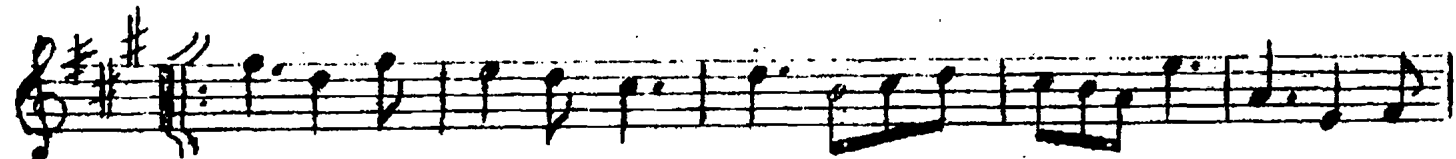
servden bâle seni



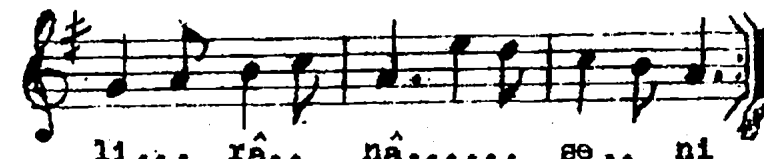
Büydan hoş renkden



ki... ze dir nazik-tenin



Beslemiş koynunda güvâ kim gül-i râhâ seni



li... râ... nâ... seni

Nâz sarhoşu
Bî-pervâ :Pervâsız
Bâle :Yüksek
Büy :Güzel koku
Pakize :Temiz
Râhâ :Güzel

Mest-i nâzım kim büyütüdü böyle bi-pervâ seni
Kim yettirdi bu günâ servden bâle seni
Büydan hoş renkden pakizedir nazik-tenin
Beslemiş koynunda güvâ kim gül-i râhâ seni (Nedîm)