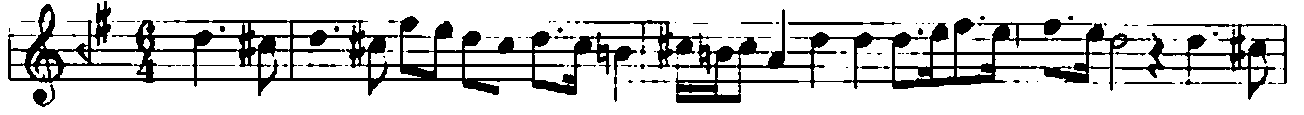


PENCGÂH YÜRÜK SEMÂİ

Müşâk-ı lebet şeker fûrûşem

USÛL: YÜRÜK SEMÂİ

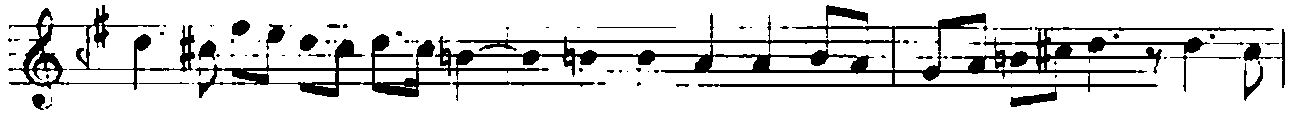
BESTE: ACEMLER



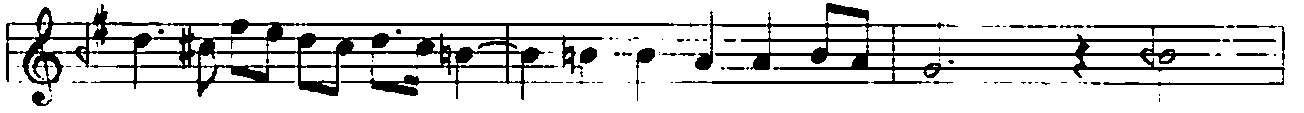
MÜ ŞÜ TÂ Kİ LE BET ŞE KER FÜ RÜ ŞEM MÜ ŞÜ



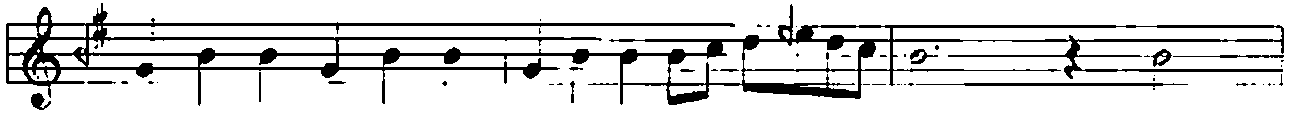
TÂ Kİ LE BET ŞE KER FÜ RÜ ŞEM ME Nİ



A ŞI Kİ RİN Dİ BÂ DE NÜ ŞEM ME Nİ



A ŞI Kİ RİN Dİ BÂ DE NÜ ŞEM AH



Bİ DÂ Nİ TÛ DÂ Nİ Bİ DÂ Nİ TÛ DÂ Nİ



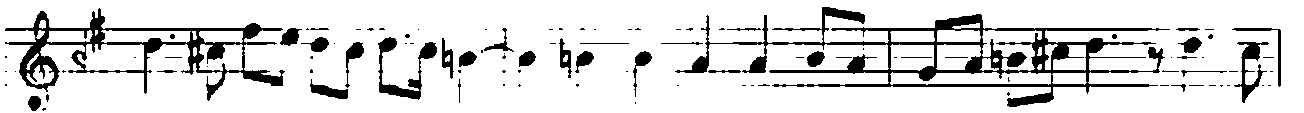
Bİ DÂ Nİ TÛ DÂ Nİ Bİ DÂ Nİ TÛ DÂ Nİ HÂ



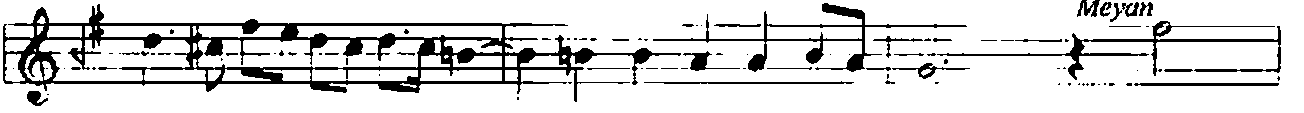
Lİ ZÂ REM E GE Rİ NE YÂ REM HÂ



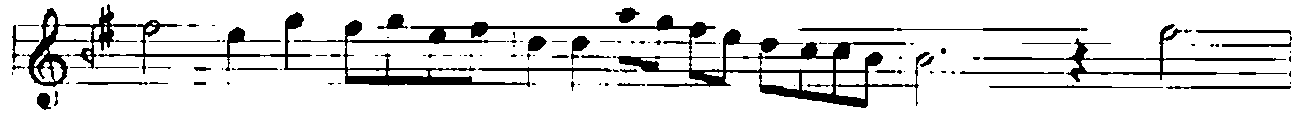
Lİ ZÂ REM E GE Rİ NE YÂ REM YÂ



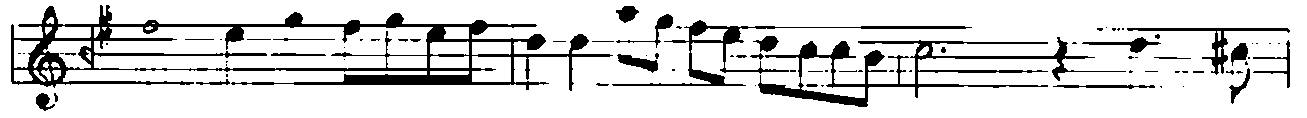
REM ME NE GER TÛ ZİN DE BÂ ŞEM YÂ



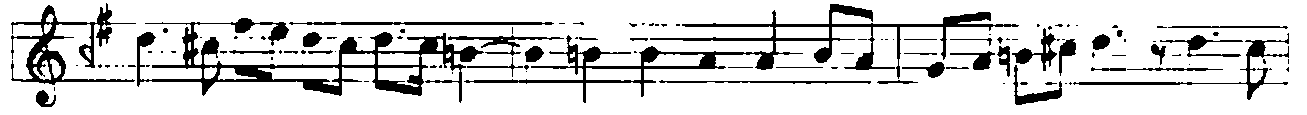
REM ME NE GER TÛ ZİN DE BÂ ŞEM BÂ



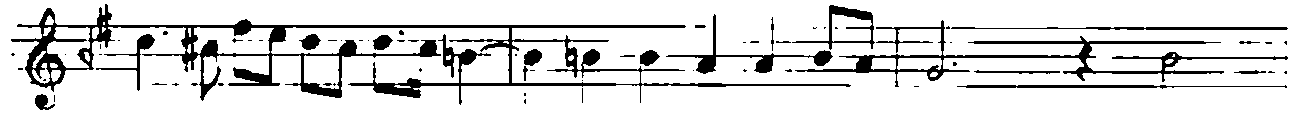
di se he ri şi ve i mâ şi Bâ



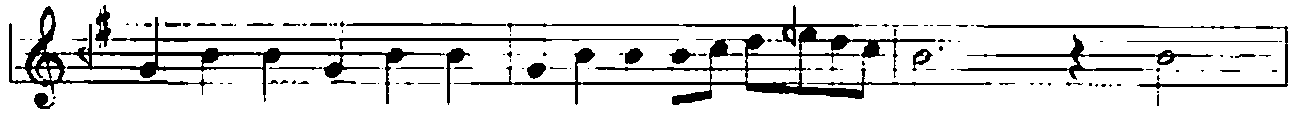
di se he ri şi ve i mâ şi Me ni



â şi kı rin di bâ de nû şem Me ni



â şi kı rin di bâ de nû şem ah



bî dâ ni tû dâ ni bî dâ ni tû dâ ni ah



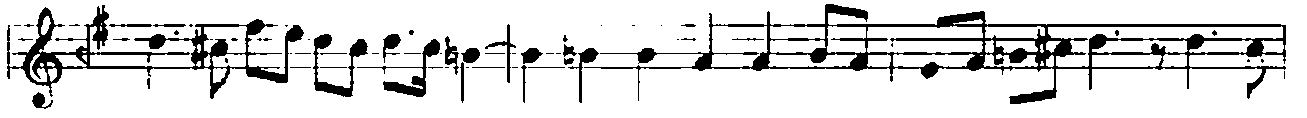
bî dâ ni tû dâ ni bî dâ ni tû dâ ni hâ



li zâ rem e gi ri ne yâ rem hâ



li zâ rem e gi ri ne yâ rem yâ



rem me ne ger tû zin de bâ şem yâ



rem me ne ger tû zin de bâ şem

Müşâk-ı lebet şeker fûrûşem
Men âşık-ı rindi bâde nûşem
Bâd-ı seher-i şive-i mâşî
Men âşık-ı rindi bâde nûşem

Terennüm: Ah bîdâni tûdâni bîdâni tûdâni
hâli zârem eger ne yârem yârem
men eger tû zinde bâşem