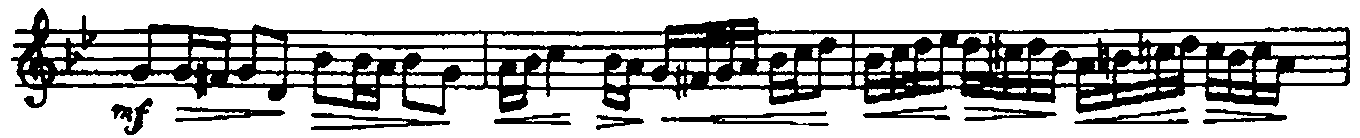
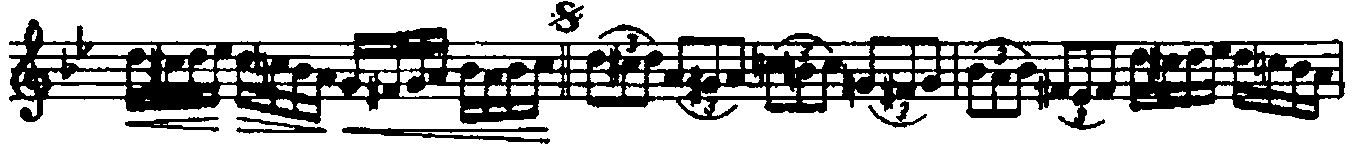


NIHÄVEND MEDHAL

USÛLÜ: SOFYAN

♩ = 100

MÜZİK: ÂRIF SÂMÎ TOKER



SEMÄI J.100

The musical score for SEMÄI J.100 is written on ten staves. It begins with a treble clef, a key signature of two flats (B-flat and E-flat), and a 2/4 time signature. The first staff contains the initial melodic phrase, marked with a mezzo-forte (mf) dynamic. The second staff is marked 'AĞIR' (slow). The third staff includes a 'rit.' (ritardando) marking. The fourth staff features a series of eighth-note chords. The fifth staff continues the melodic line. The sixth staff is marked 'SERBEST' (ad libitum) and 'mf'. The seventh staff shows a melodic phrase with a trill. The eighth staff continues the melodic development. The ninth staff features a melodic phrase with a trill. The tenth staff concludes the piece with a 'KARAR' (final) marking and a double bar line. The score includes various musical notations such as slurs, ties, and dynamic markings.