

NIHAVEND METHAL

Enise Can

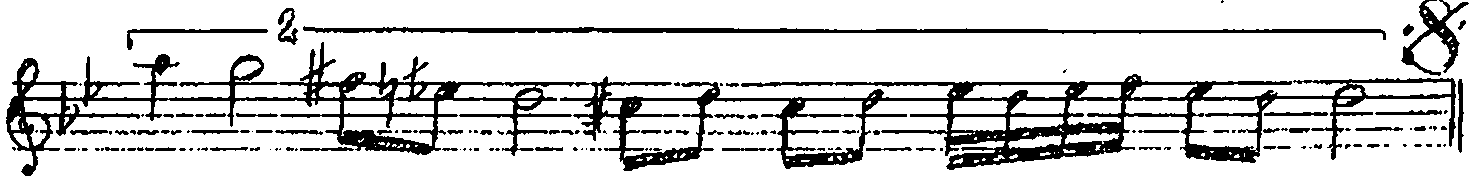
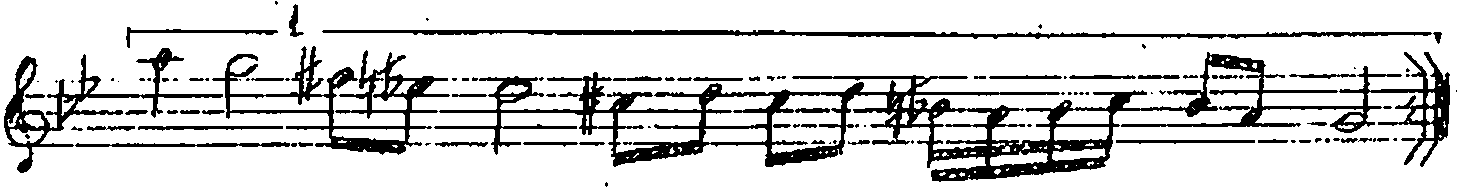
Usulü: Fronçin (4)

Handwritten musical score for the first section of 'Nihavend Methal' by Enise Can. The score is written in G major (one sharp) and 4/4 time. It consists of eight staves of music. The first staff has a '4(2)' marking. The piece concludes with a double bar line and the word '(Son)'.

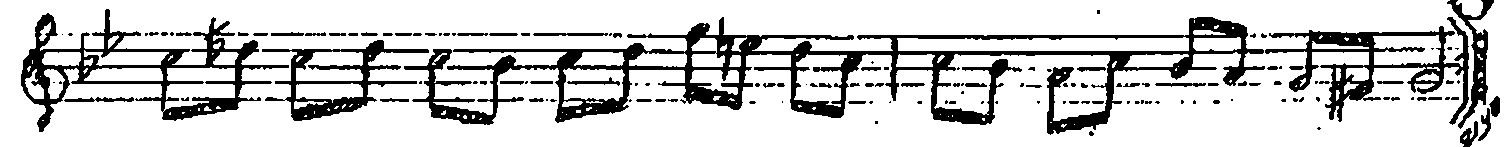
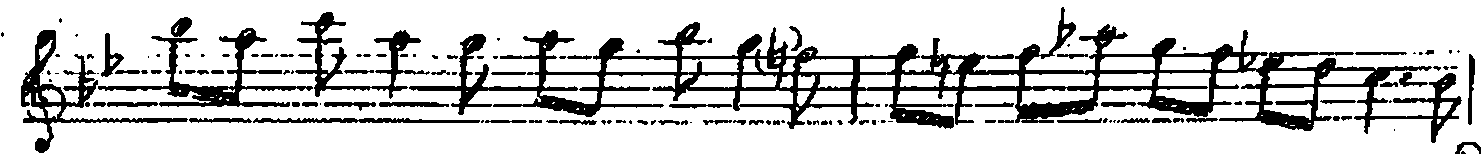
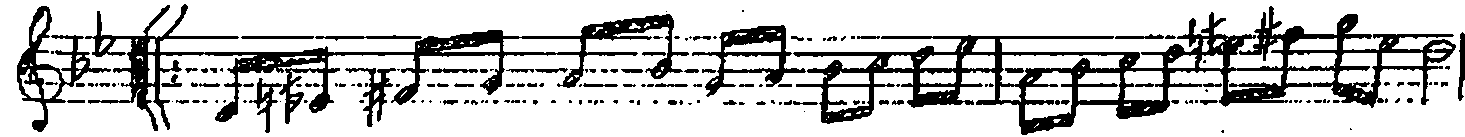
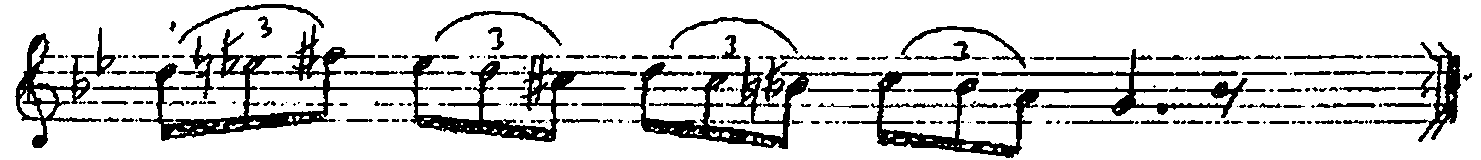
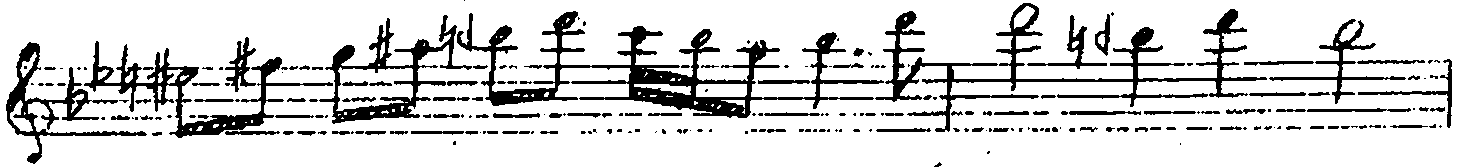
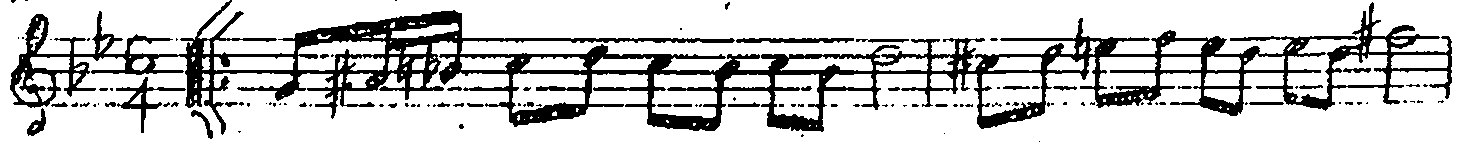
(2 inci Bölüm)

Handwritten musical score for the second section of 'Nihavend Methal'. It consists of two staves of music in G major, 4/4 time. The second staff features six triplets, each marked with a '3'.

Nihavend Methal devan



(3 üncü ve son bölün)



Frenkcin42
Usûlü: 4

Düm düm düm düm te ke te ke te ke