

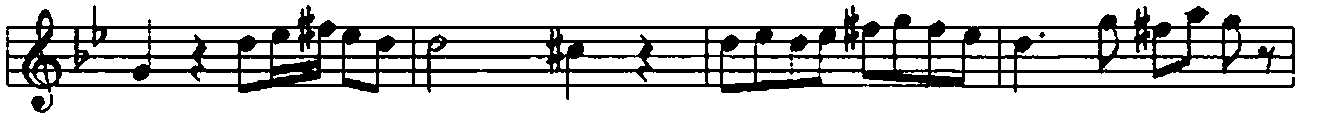
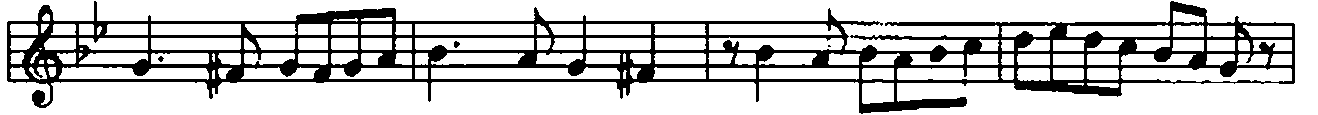
# NİHAVEND PEŞREV

USÛL: DEVR-I KEBİR

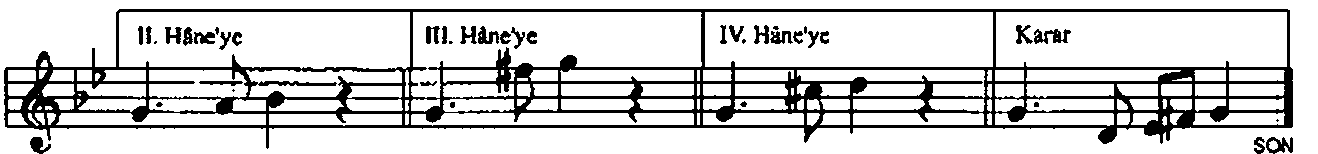
*Birinci Hane*

BESTE: TANBURI BÜYÜK

OSMAN BEY



*Mülâzime* 



*İkinci Hane*

Musical notation for the second hane, consisting of six staves of music in a single system. The notation includes treble clef, a key signature of two flats, and various rhythmic values. The first staff features two triplet markings over eighth notes. The system concludes with a double bar line and a repeat sign.

*Üçüncü Hane*

Musical notation for the third hane, consisting of six staves of music in a single system. The notation includes treble clef, a key signature of two flats, and various rhythmic values. The first staff features a triplet marking over eighth notes. The system concludes with a double bar line and a repeat sign.

*Dördüncü Hane*

A musical score for a piece titled "Dördüncü Hane". The score is written on six staves of music, each beginning with a treble clef and a key signature of two flats (B-flat and E-flat). The notation includes various note values, rests, and accidentals (sharps and naturals). The piece concludes with a double bar line and a fermata symbol.