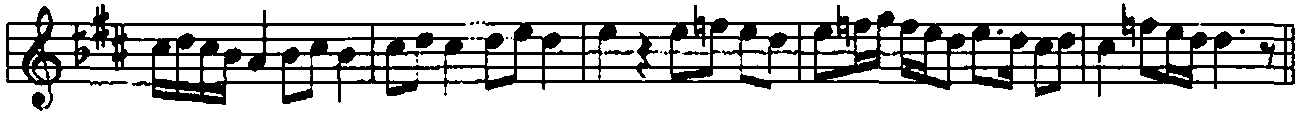


NİKRİZ PEŞREV

USÛL: DEVR-I KEBİR

BESTE: TANBURI
KEMAL BATANAY

Birinci Hane



Mülazime %



İkinci Hane



Üçüncü Hane



Musical notation for Üçüncü Hane, consisting of four staves. The first staff begins with a treble clef, a key signature of one sharp (F#), and a common time signature (C). The melody is written in eighth and sixteenth notes. The second and third staves continue the melody with similar rhythmic patterns. The fourth staff concludes the section with a double bar line and a repeat sign.

Dördüncü Hane



Musical notation for Dördüncü Hane, consisting of four staves. The first staff begins with a treble clef, a key signature of one sharp (F#), and a common time signature (C). The melody is written in eighth and sixteenth notes. The second and third staves continue the melody with similar rhythmic patterns. The fourth staff concludes the section with a double bar line and a repeat sign.