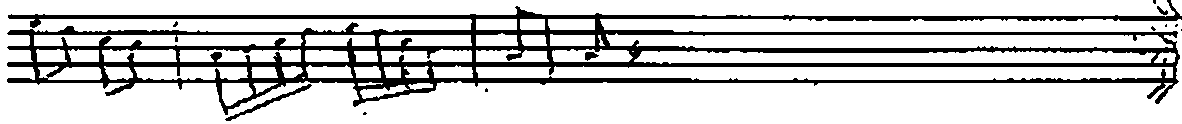


Nisabülrek dîyûn havâssı Ueda Sedat
نسابیله رک دییون هواسی عود سادات

The image displays a handwritten musical score on ten staves. The notation is in a traditional style, likely Ottoman or Arabic, featuring various note values, rests, and ornaments. The first staff begins with a treble clef, a key signature of one sharp (F#), and a 2/4 time signature. The music is written in a single melodic line. The notation includes many sixteenth and thirty-second notes, often beamed together. There are several fermatas and other performance markings throughout the piece. The handwriting is clear and consistent across all staves.



بدره تارا لیدو *

Cüneyt KOSAL