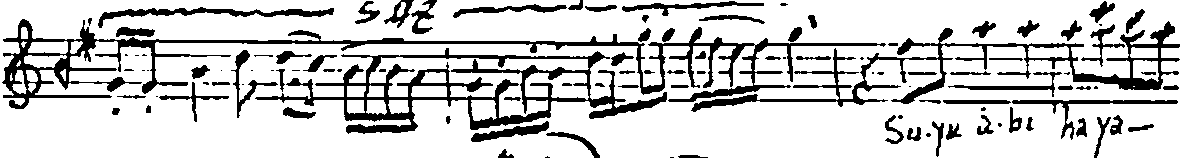
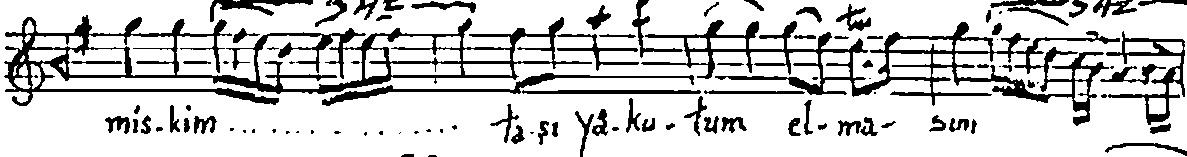
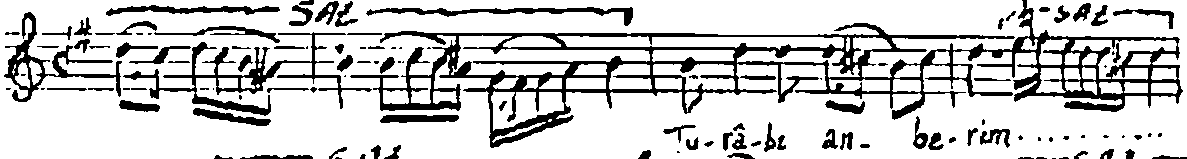
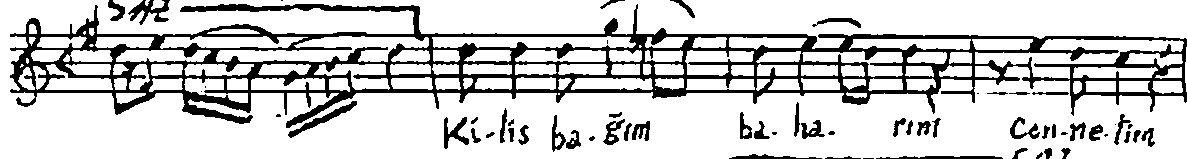
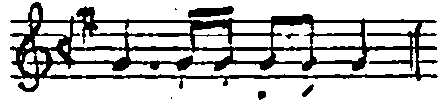
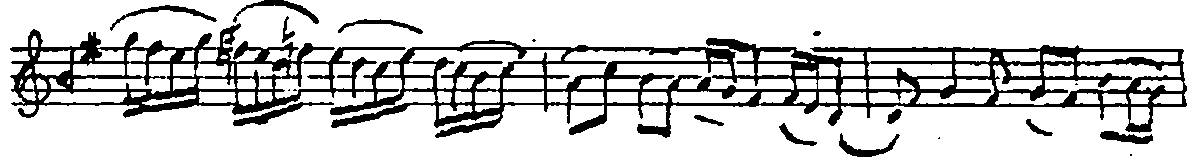
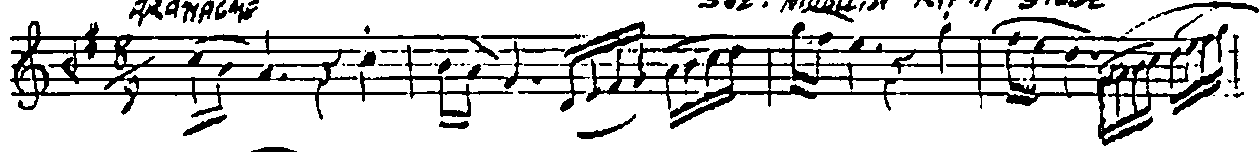


A. Y.  $\text{♩} = 106$   
Düch  
ARANAÇE

# RAST ŞARKI

Beste: Dr. Alâeddin Yavaşca  
B.Y. - 19 2/1910  
Söz: Muallim Rifat Dilge



SAZ

Ri-câ-li eh-li

ir-fan-dir ni-sâ-ri hü-ri hâ-ri dün-ya-dir

Züm-rüt-dir bü-tün.....

SAZ

dağ-lar mu-at-tar-dir bü-tün..... yer-ler

SAZ

Ki-lis dün-ya-da bir

ta-ne... bir ta-ne ma-kamı dil..... si-tâ nim-

SAZ

dir U-zak düs-tüm

fa-kat bön-lüm ki-lis-ten çık-ma-du... çık-ma-du... .. Rîş'

SAZ

at Ki-lis pek sev.

gi-li an-nem ki-lis ki-lis rü-hi re-vâ-nim.....

dir..... Son

Dr. Alâeddin Yavuzcu