

Süre : 2'48"

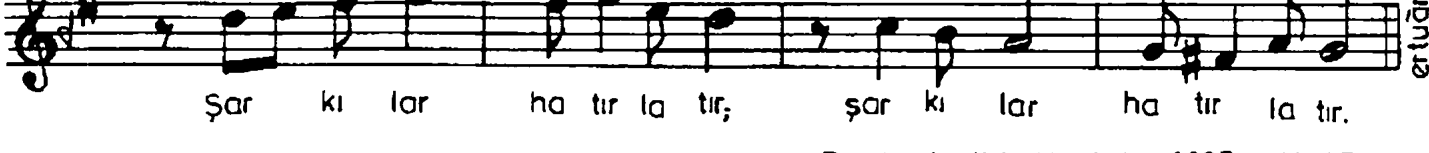
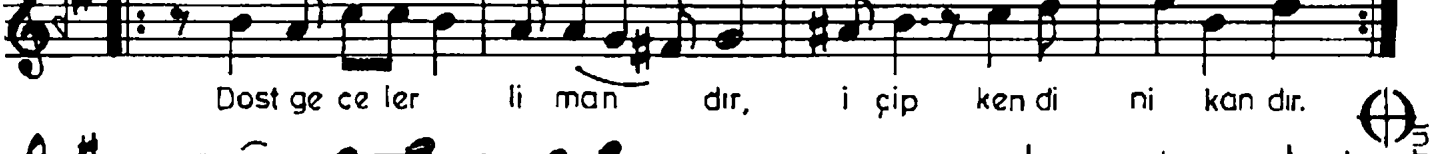
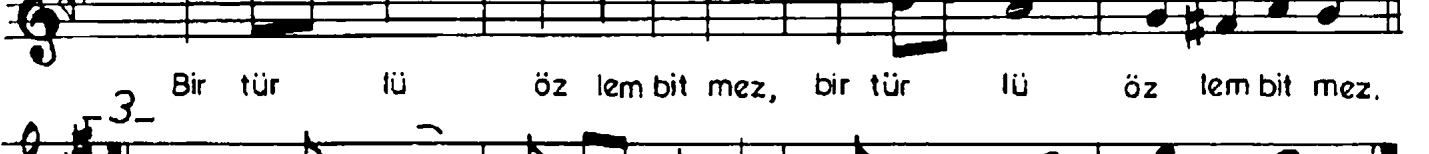
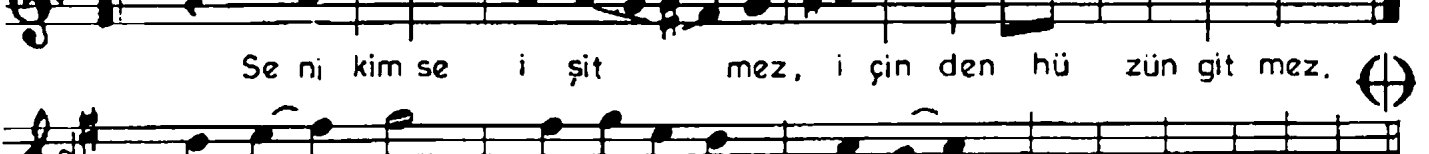
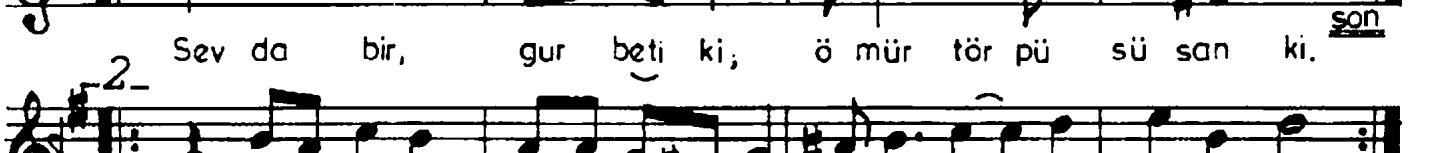
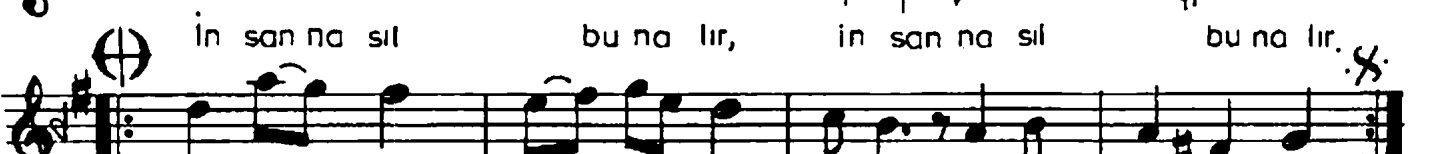
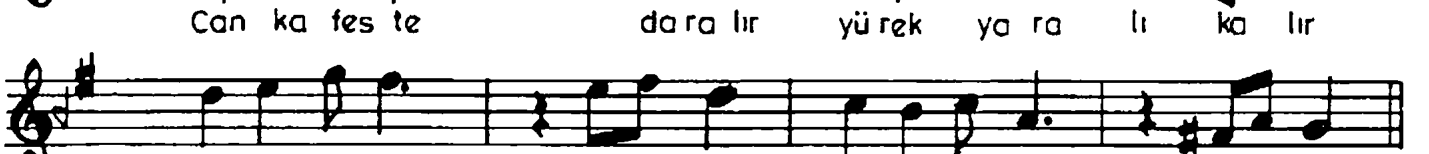
# RAST ŞARKI

Söz:Şahin Çandır  
Müzik:Ertuğrul OTTEKİN

♩ : 120

## "CAN KAFESTE DARALIR,"

SOFYAN



Beste tarihi: Haziran 1995 ANKARA

Can kafeste daralır,  
Yürek yaralı kalır,  
İnsan nasıl bunalır,  
İnsan nasıl bunalır.

Seni kimse işitmez,  
İçinden hüznün gitmez,  
Bir türlü özlem bitmez,  
Bir türlü özlem bitmez.

Dost geceler limandır,  
İçip kendini kandır,  
Şarkılar hatırlatır,  
Şarkılar hatırlatır.

Sevda bir, gurbet iki,  
Ömür törpüsü sanki.

ertuğrul