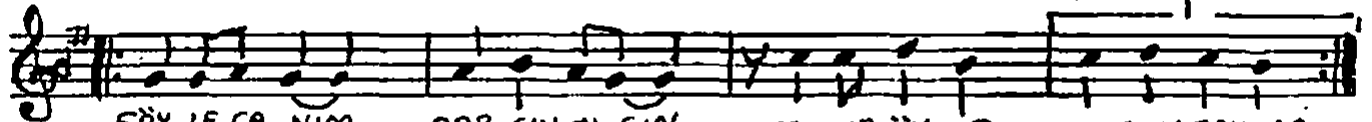
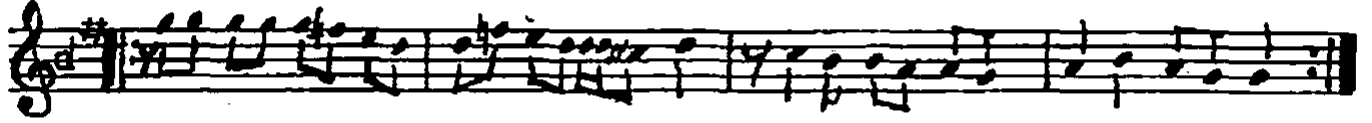
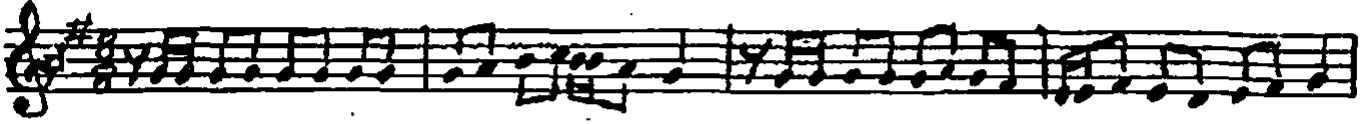


RAST

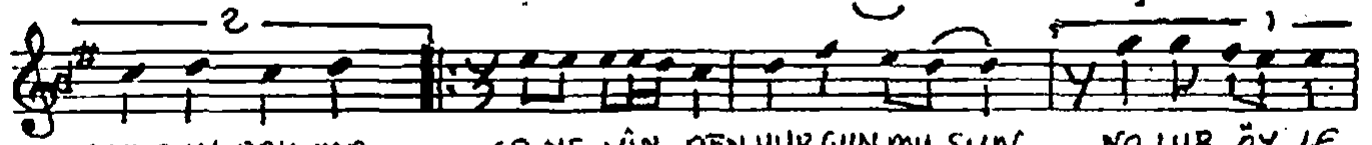
Söyle canım dargın mısın

MÜZİK: ENGİN ÇİRE
SÖZ: SADETTİN KAPLAN

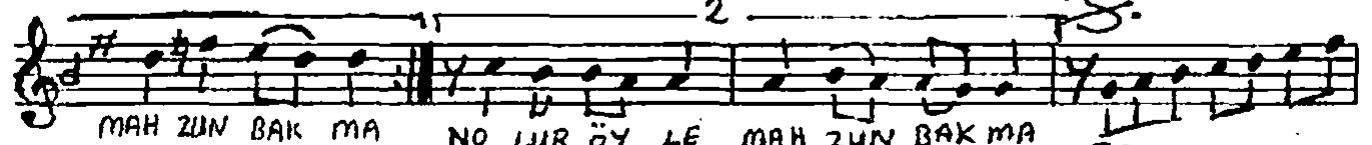
$\text{♩} = 72$ DÜYK



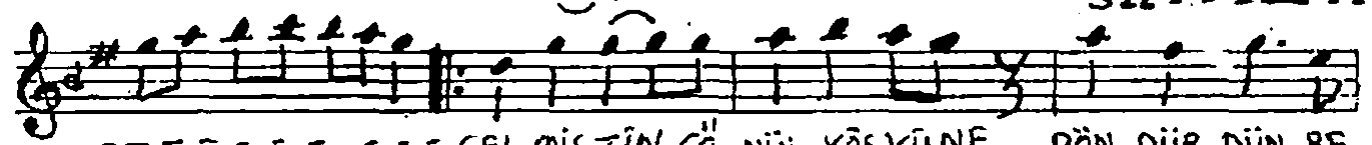
SÖY LE CA NIM . DAR GIN MI SIN NO LUR ÖY LE MAH ZUN BAK MA



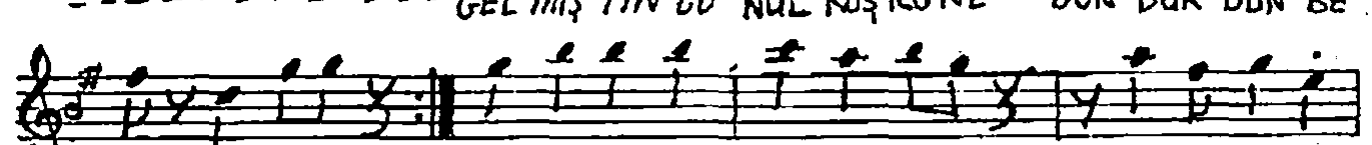
MAH ZUN BAK MA CA NE VİN DEN VURGUN MU SUN NO LUR ÖY LE



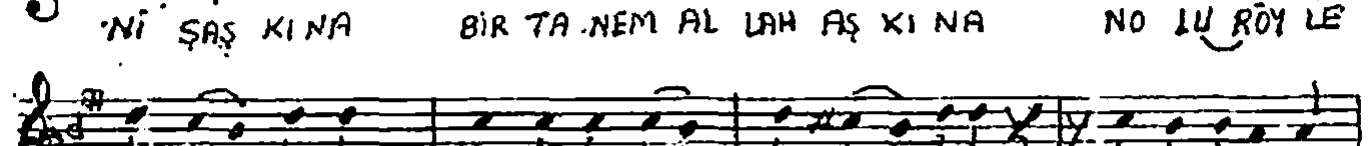
MAH ZUN BAK MA NO LUR ÖY LE MAH ZUN BAK MA



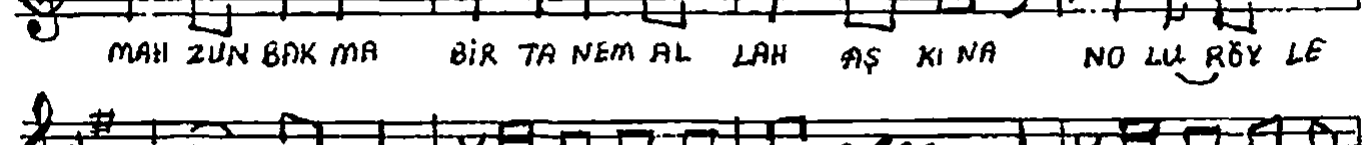
GEL MIŞ TİN GÖ NÜL KÖŞKÜNE DÖN DÜR DÜN BE



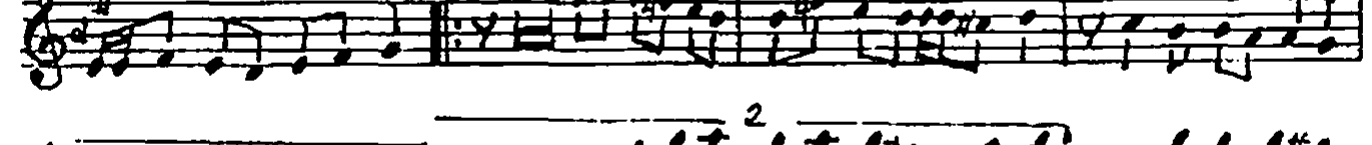
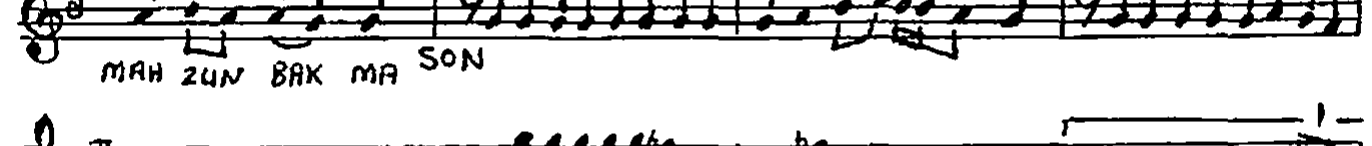
NI ŞAŞ KINA BİR TA NEM AL LAH AŞ KINA NO LU RÖY LE



MAH ZUN BAK MA BİR TA NEM AL LAH AŞ KINA NO LU RÖY LE



MAH ZUN BAK MA SON



YÜ ZÜN DE SEV DA

NAKI ŞI ŞA... BA HA RA DÖN DÜ RÜR KİŞİ DÜRÜR Kİ Şİ

BEN Bİ LİRİM O BA KİŞİ NO LU RÖY LE MAH ZUN BAKMA

NO LU RÖY LE MAH ZUN BAKMA

SÖYLE CANIM DARGIN MISIN
NOLUR ÖYLE MAHZUN BAKMA
CANEVİNDEN VURGUN MUSUN
NOLUR ÖYLE MAHZUN BAKMA

GELMİŞTİN GÖNÜL KÖŞKÜNE
DÖNDÜRDÜN BENİ ŞAŞKINA
BİR TANEM ALLAH AŞKINA
NOLUR ÖYLE MAHZUN BAKMA

YÜZÜNDE SEVDA NAKİŞİ
BAHARA DÖNDÜRÜR KİŞİ
BEN BİLİRİM O BAKİŞİ
NOLUR ÖYLE MAHZUN BAKMA