

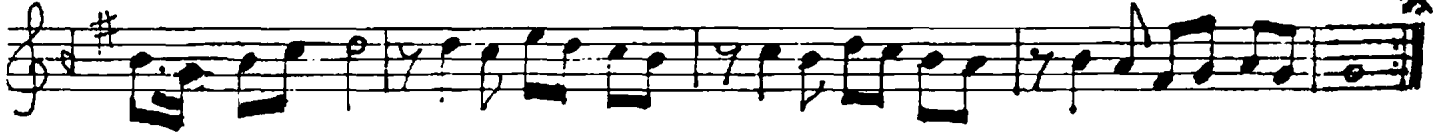
♩: 200
DÜYEK

RAST ŞARKI
(KOPARDIN GÖNLÜMÜN NAZLI GÜLÜVÜ)

Müzikçi Mete CEVAHİR
Çöz: Yemin ŞAKAR



ARNAĞME



KO PAR DIN GÖN LÜ MÜN NAZ LI GÜ LÜ NÜ (SAZ) ŞAN SIV VAR MIŞ



Gİ Bİ (SAZ) SOL MA DI YOR SUN (SAZ - - - -) CE HEN NEM



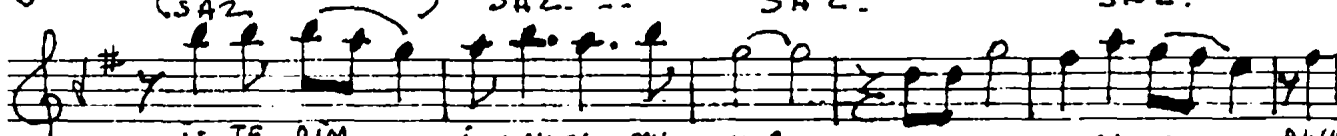
NE DİR KI SE NİN YA NIN DA (SAZ) FER YA DI MA



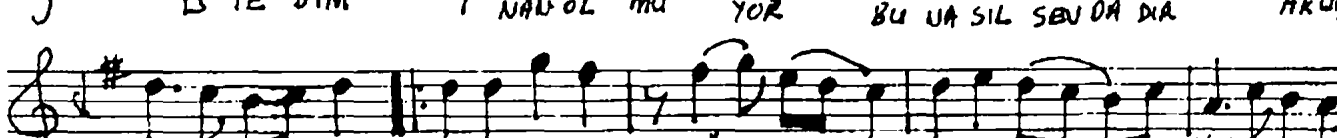
GÜ LÜP YAN MA OI YOR SUN (SAZ - - - -) SUN



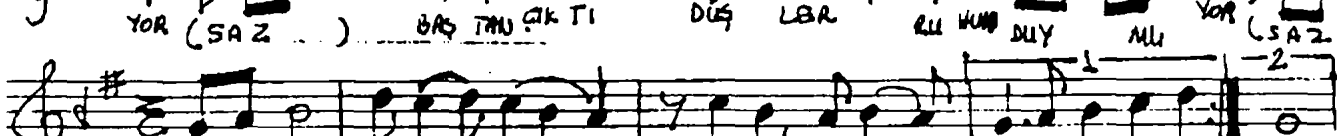
(SAZ) SAZ. - - SAZ. SAZ. 4 NUT MAK



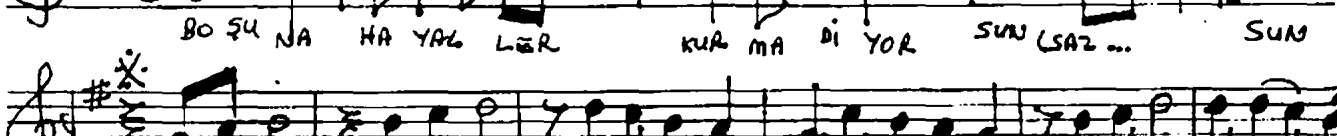
İS TE DİM İ NA OL MU YOR BU NA SIL SEV DA DA AKU MAL MI



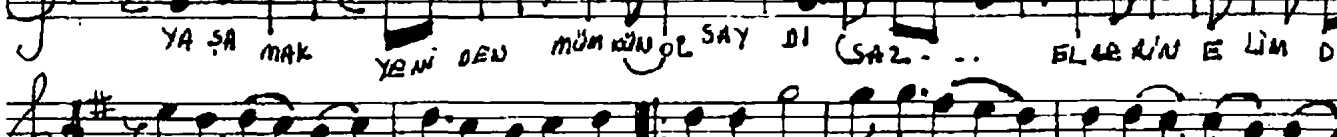
YOR (SAZ) BAŞ TAN ÇIK TI DÜŞ LER RU HUN DUY MI YOR (SAZ - -)



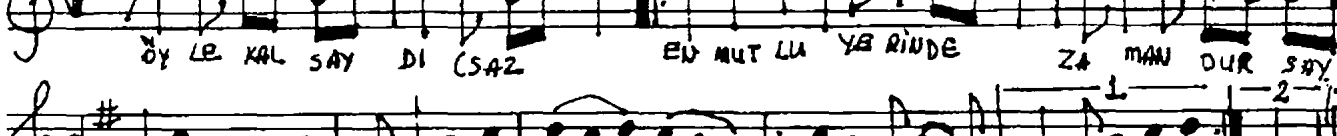
BO SU NA HA YAL LER KUA MA DI YOR SUN (SAZ ...) SUN



YA SA MAK YEM DEN MÜM KÜN OL SAY DI (SAZ - - -) ELER İN E LİM DE



ÖY LE KAL SAY DI (SAZ) EN MUT LU YA RİN DE ZA MAN DUR SAY



DI (SAZ) 4 NUT GİT SİN AR TIK . AN MA YOR SUN (SAZ -) SUN