

# RAST ŞARKI

"Gönümü engin bakışlı gözlerindir bağlayan"

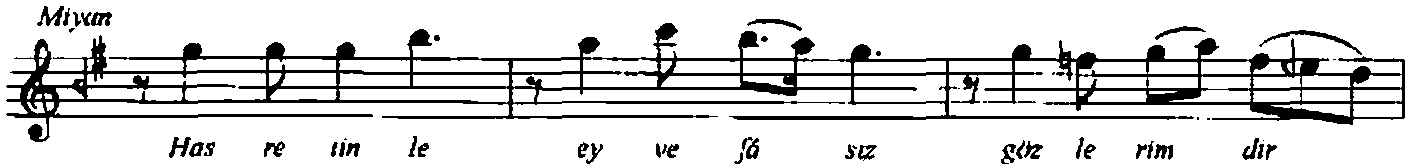
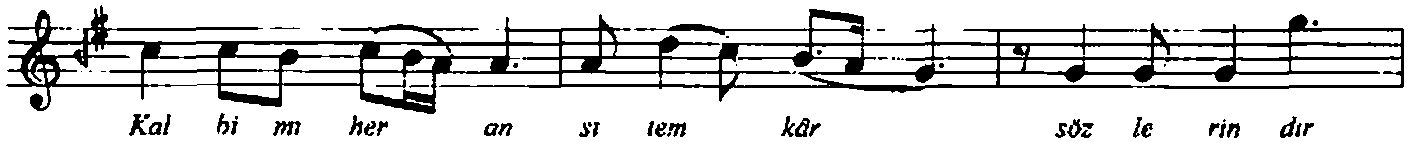
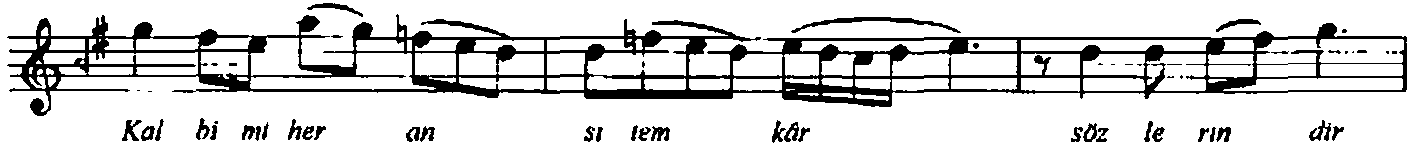
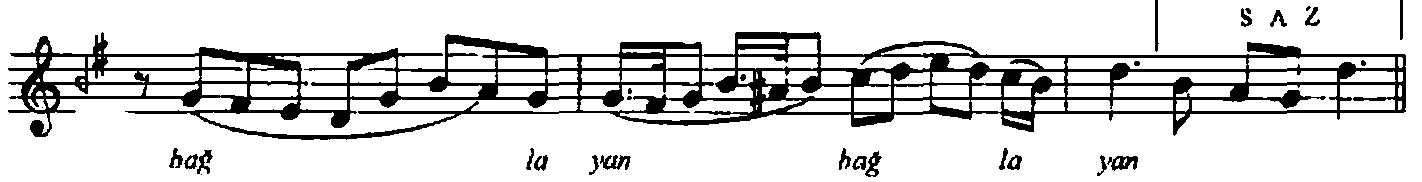
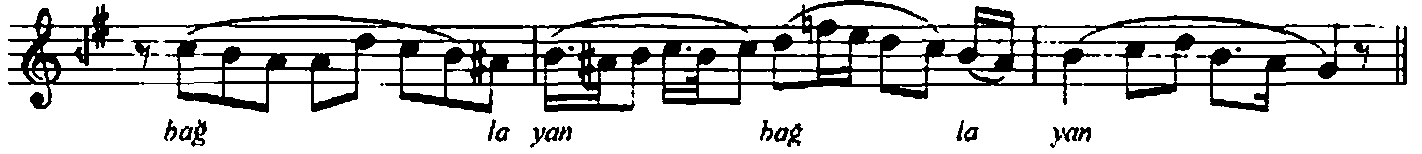
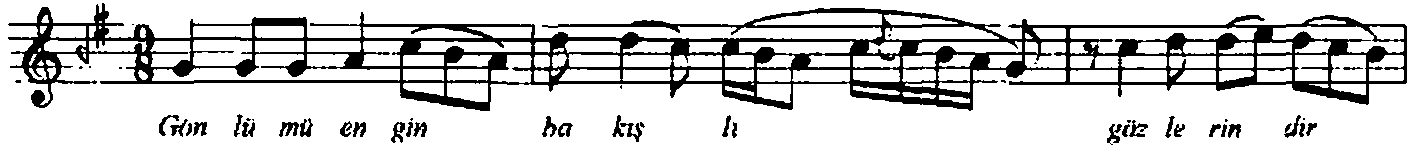
Beste: Alâeddin YAVAŞÇA

Güfte: Reyat ÖZPİRİNÇÇİ

Beste tar.: 11. Eylül 2002 - Bodrum

Usul: Aksak

♩ = 88



"Gönlümü engin bakışlı gözlerindir bağlayan" - devamı

Has re tin le ey ve fâ sız göz le rim dir  
ağ la yan ağ la yan  
En hü zün lü bes te ler de söz le rim dir  
çağ la yan çağ la yan  
En hu zun lu bes te ter de soz le rim dir  
çağ la yan çağ la yan

S A Z

(SON)

Dr. Semra Çengül  
01.11.2002

Gönlümü engin bakışlı gözlerindir bağlayan  
Kalbimi her an sitemkâr sözlerindir dağlayan  
Hasretinle ey vefâsız gözlerimdir ağlayan  
En hüzünlü besteler de sözlerimdir çağlayan