

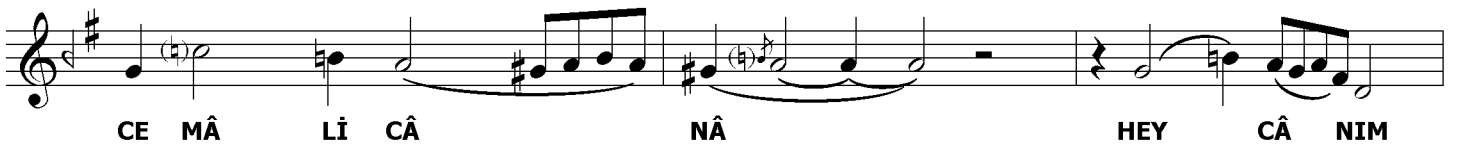
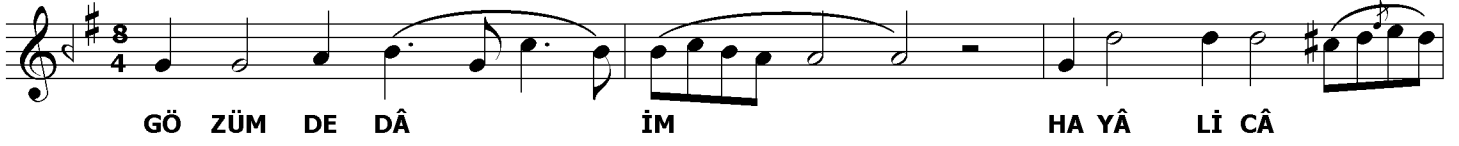
# RAST KÂR-I NEV

## GÖZÜMDE DÂİM HAYÂLİ CÂNÂ

USÛLÜ : AĞIR DÜYEK

MÜZİK: DEDE EFENDİ

♩ = 88



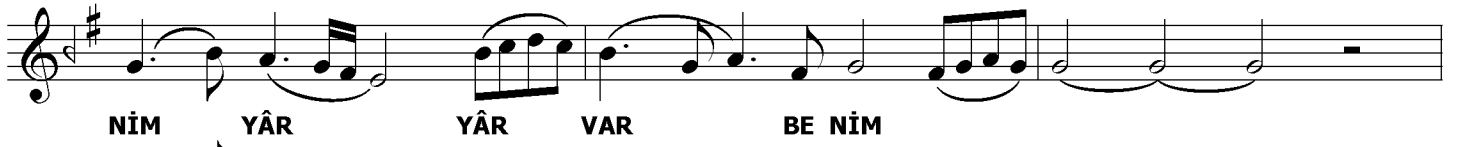


HÂN

SE NİN Gİ Bİ GÜ ZEL E FEN

DİM VAR VAR

BE



NİM

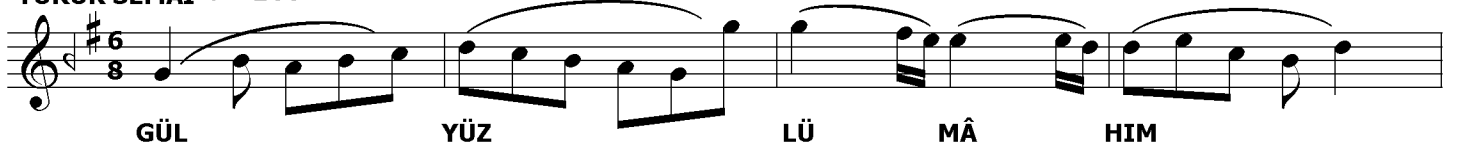
YÂR

YÂR

VAR

BE NİM

YÜRÜK SEMÂÎ ♩ =144



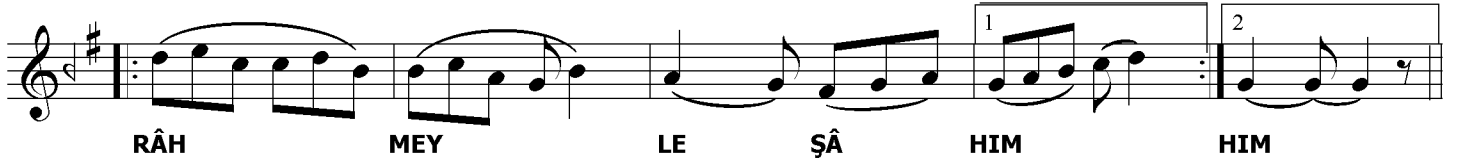
GÜL

YÜZ

LÜ

MÂ

HIM



RÂH

MEY

LE

ŞÂ

HIM

HIM



ÇEŞ

Mİ

Sİ

YÂ

HIM



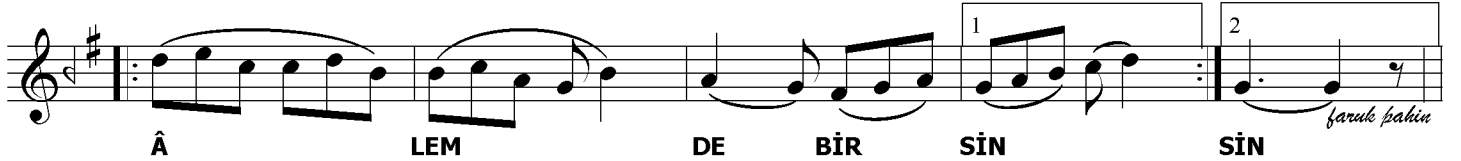
ÇEŞ

Mİ

Sİ

YÂ

HIM



Â

LEM

DE

BİR

SİN

SİN

*faruk bahin*

GÖZÜMDE DÂİM HAYÂLİ CÂNÂ (AH)  
GÖNÜLDE HER DEM CEMÂL-İ CÂNÂ  
HEY CÂNIM HEY ÖMRÜM HEY  
(AH) EY PERİ- RÛ DİLBERİ RÂNÂ CİVÂNİ NÂZENİN  
(AH) GAM BENİM, ŞÂDİ SENİN  
HİCRÂN BENİM, DEVRÂN SENİN  
YÂR BENİM DEVRÂN SENİN  
EY ŞÂH-I CİHÂN EY DİLDE NİHÂN  
SENİN GİBİ GÜZEL EFENDİM VAR BENİM  
YÂR YÂR VAR BENİM  
GÜL YÜZLÜ MÂHİM, RÂHMEYLE ŞÂHİM  
ÇEŞM-İ SİYÂHİM ÂLEMDE BİRSİN.