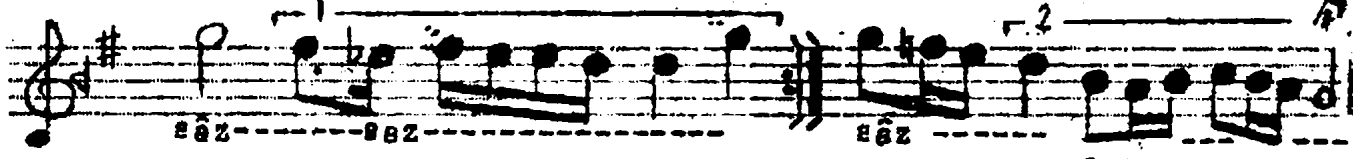
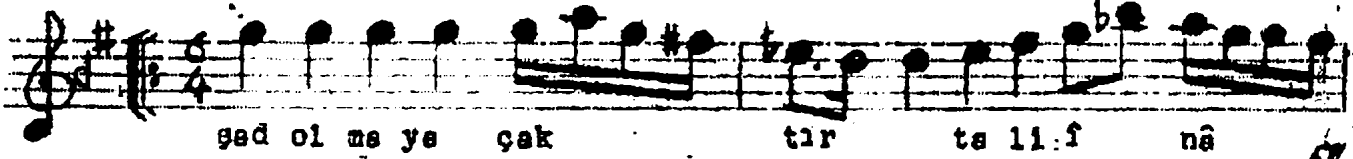
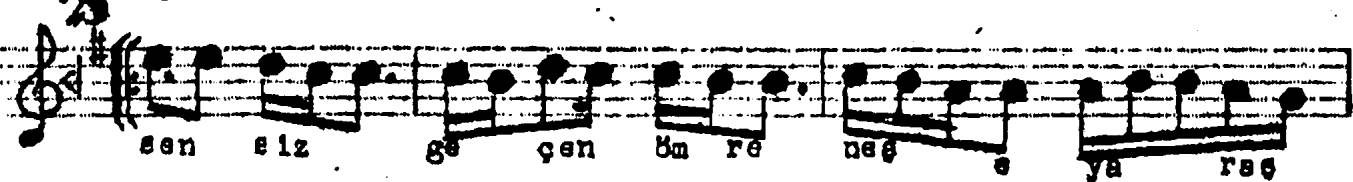
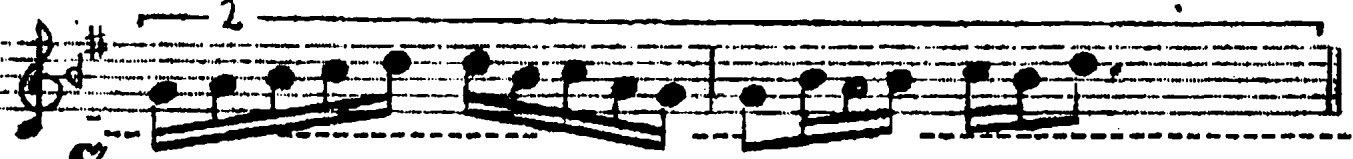
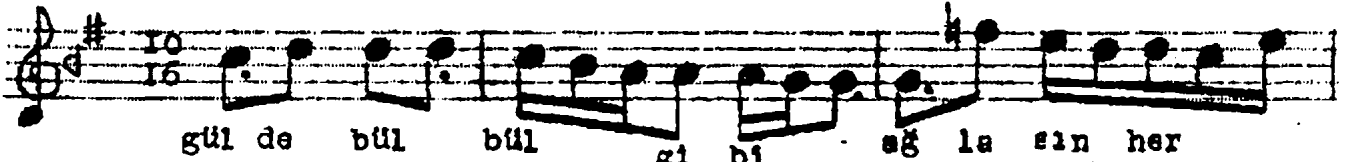


R A S T Ş A R K I  
( gülde bülbül gibi ağlasın )

ŞERİF İÇLİ  
(TULUN KORMAN'dan)



Gülde bülbül gibi ağlasın her yaz  
Sensiz geçen büre neş e yarağmaz  
Şad olacağıdır talî f nâ şad  
Sensiz geçen büre neş e yarağmaz