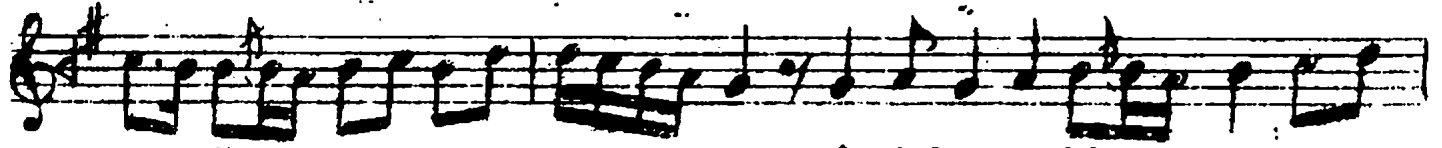
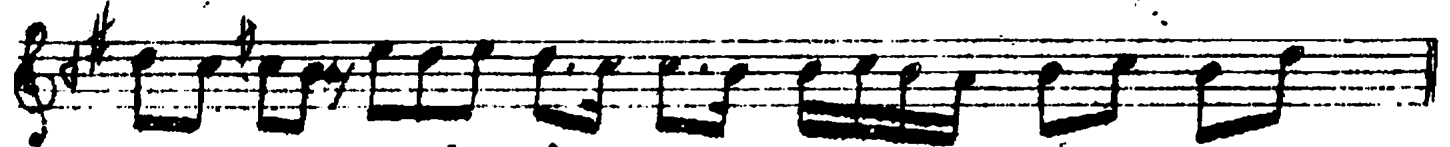


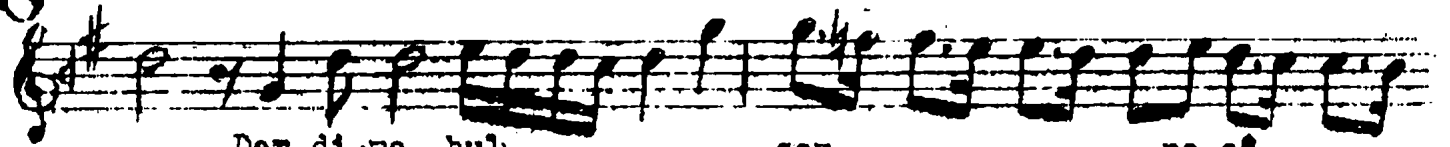
Mâ i len... bir..... naz li yâ



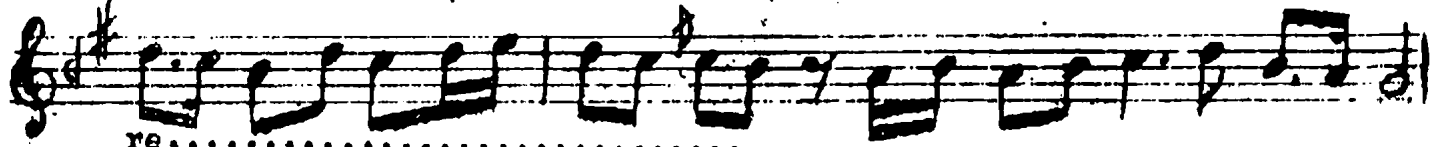
.... re..... mâ i len - bir.....



..... naz li yâ..... re .....

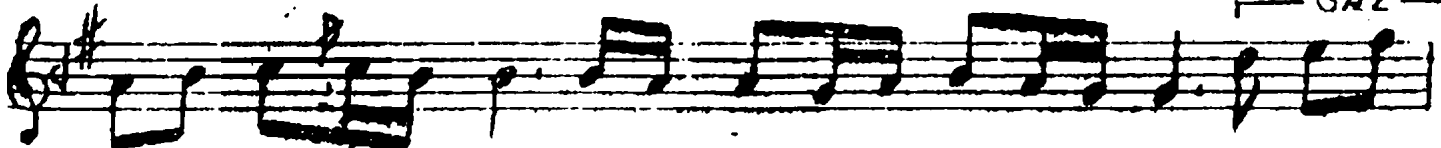


Der di ne bul,..... san..... ne çâ.....  
Giy ne câân pen be hâ

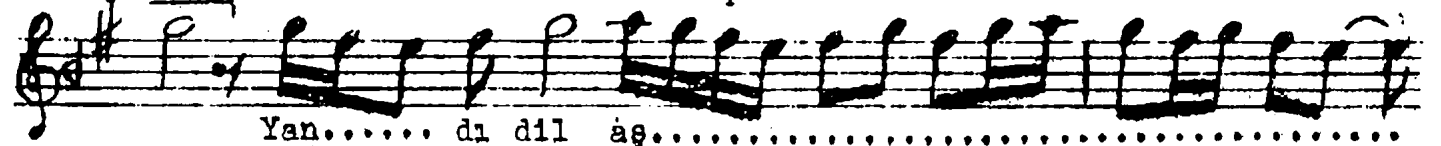


re..... der..... di ne..... bul.....  
re si nen ol du

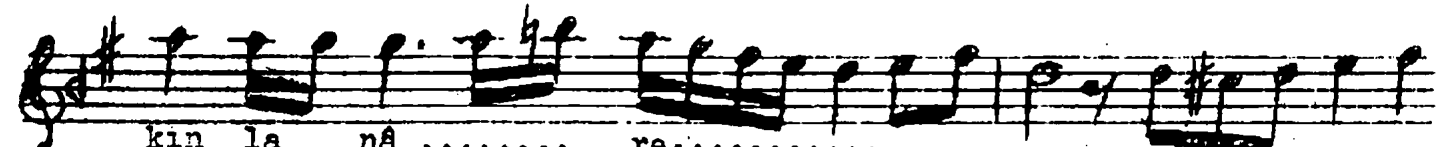
— SAZ —



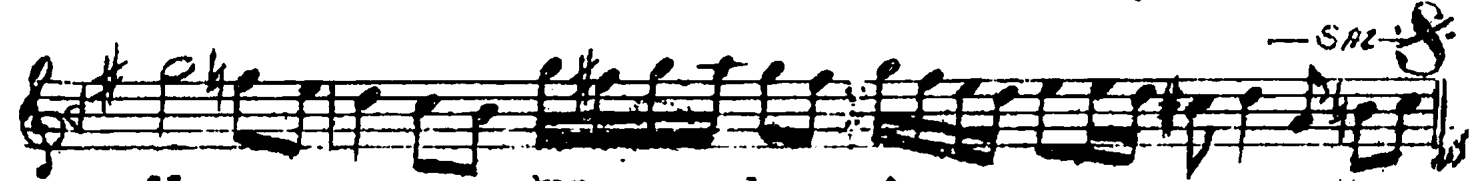
san..... ne çâ..... re  
pâ re pa re



Yan..... dı dil aş.....



kin la nâ ..... re..... yan dı dil...



aş..... kin la nâ..... re

Mâilen bir nazlı yâre  
Derdinê bulsan ne çâre  
Yandı dil aşkınla nâre  
Giyne cânın penbe hâre.  
Sinem oldu pâre pâre

Mâil olmak - eğilmek, tenayül etmek  
Dil - gönül  
Nâr - ateş  
Hâre - bir çeşit kınaş: