

RAST ŞARKI

YİNE BİR GÜL-NİHÂL ALDI BU GÖNLÜMÜ

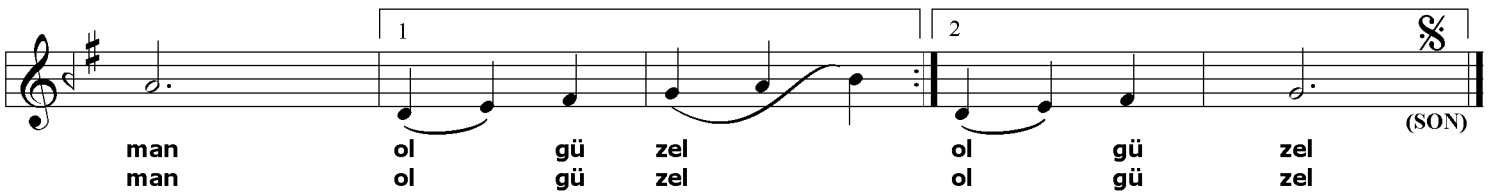
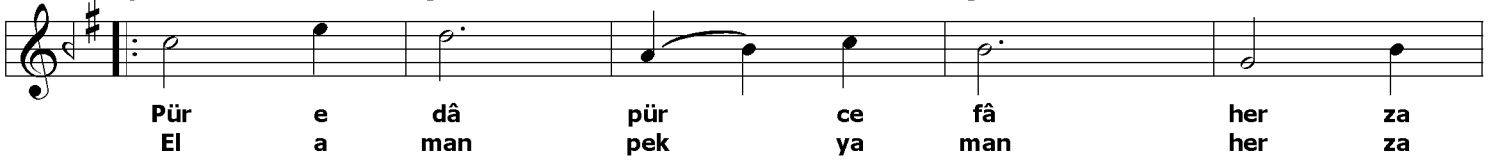
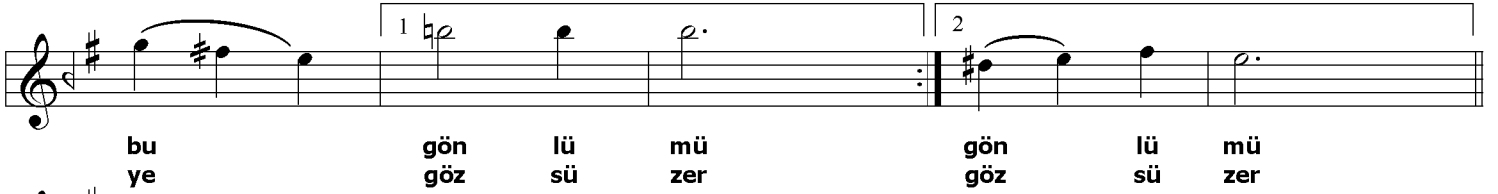
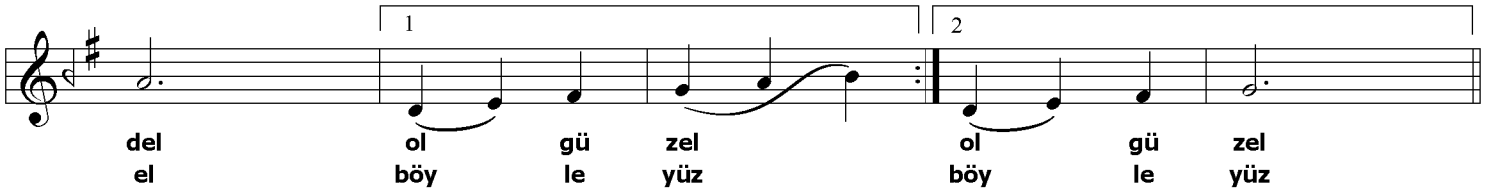
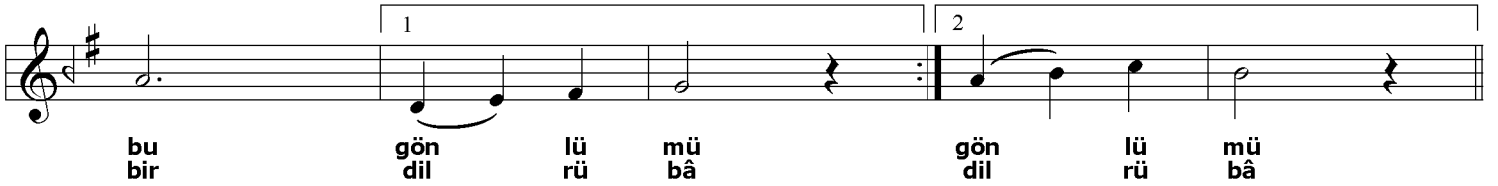
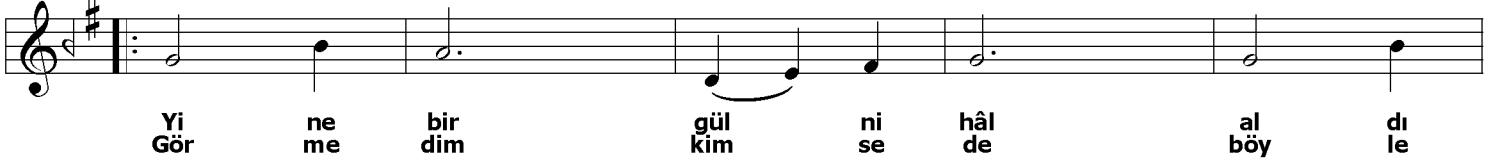
BESTE : İsmail DEDE
(Hammâmizâde)

USÛLÜ : SEMÂÎ



(ARANAĞME)

(1-2)



(SON)

Yine bir gül-nihâl aldı bu gönlümü,
SİM-ten, gonca-fem, bî-bedel ol güzel.
Âteşin rûhleri yaktı bu gönlümü,
Pür-edâ, pür-cefâ, pek küçük, pek güzel.

Görmedim kimsede böyle bir dil-rübâ,
Böyle kaş, böyle göz, böyle el, böyle yüz.
Âşıkın bağrını üzmeye göz süzer,
El-aman, pek yaman, her zaman ol güzel.