

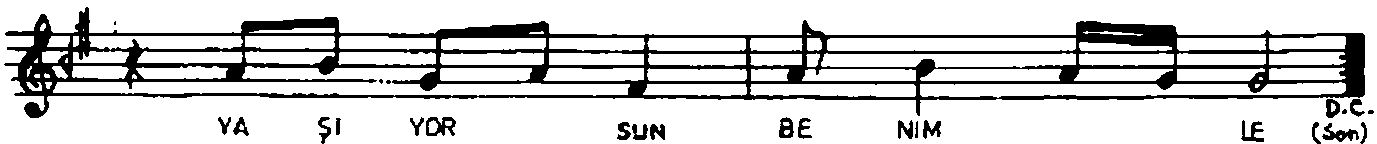
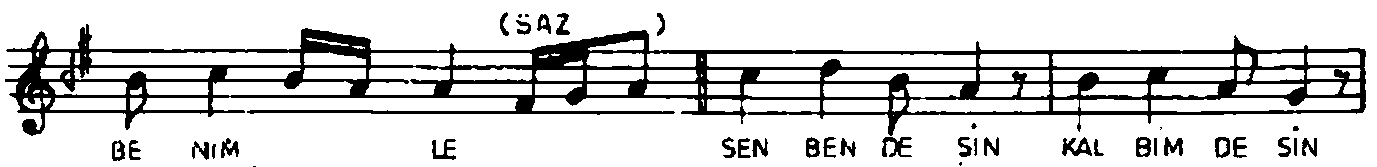
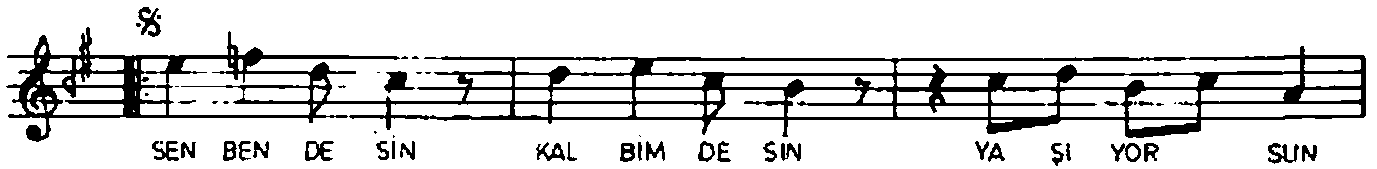
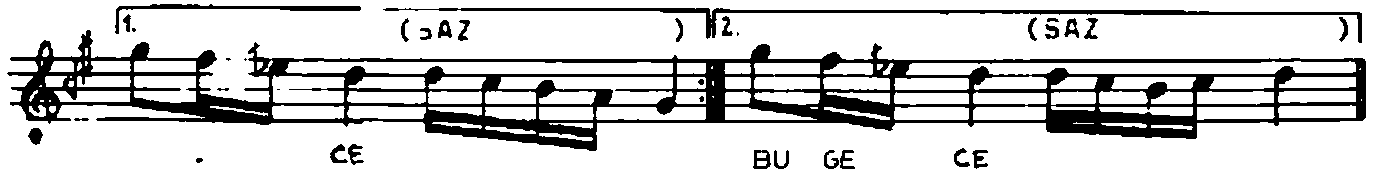
DÜYEK

RAST SARKI

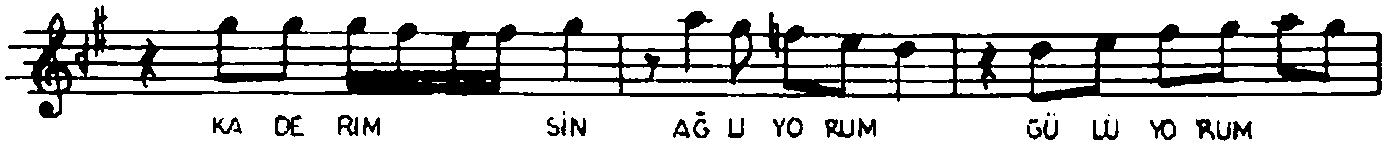
YİNE GONLUM HASRETİNLE ÖZLEMİNLE BUĞECE

MUZİK= SEVİNÇ TEVRUZ
SOZ =GÜNSEL ÇELİKOĞLU

♩ 160



MIYAN



The image shows two staves of musical notation in a treble clef with a key signature of one sharp (F#). The first staff contains the lyrics: SE NİN LE (SAZ) KA DE RİM SİN AĞ LI YO RUM. The second staff contains the lyrics: GÜ LÜ YO RUM SE NİN LE (SAZ) \$\$. The notation includes various note values, rests, and a double bar line at the end of the second staff.

YİNE GÜNLÜM HASRETİNLE, ÜZLEMİNLE BU GECE;
SEN BENDESİN, KALBİMDESİN, YAŞIYORSUN BENİMLE.
KADERİMSİN, AĞLIYORUM, GÜLÜYORUM SENİNLE,
SEN BENDESİN, KALBİMDESİN, YAŞIYORSUN BENİMLE.