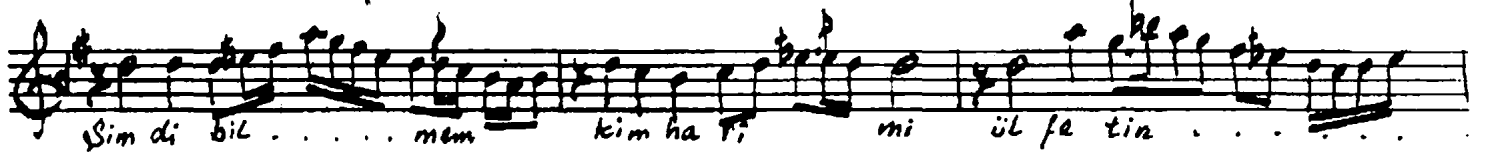
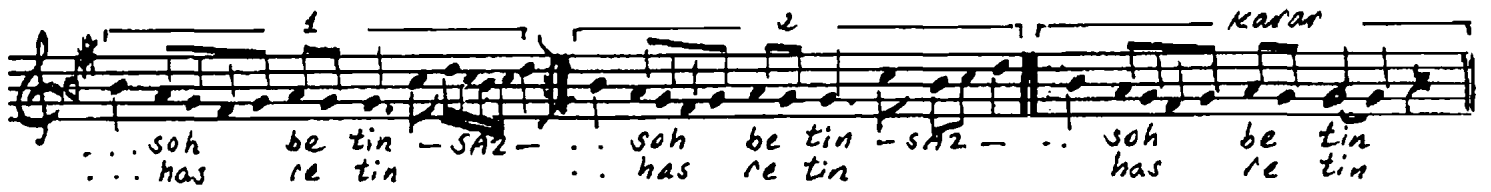
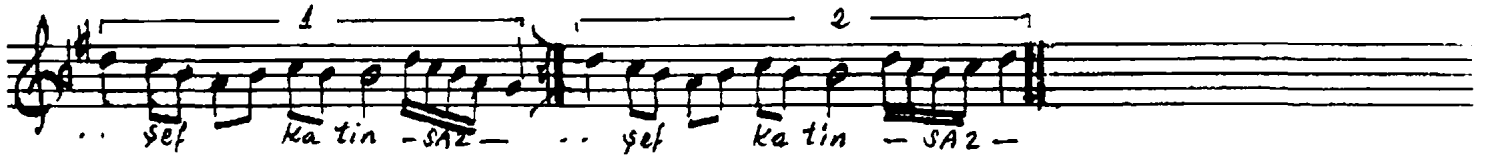


Usulü Dügük

RAST SARKI

Beste: LEM'İ ATLI



*Yok mu câ nâ â sı ka hiç şef ka tin  
Vâ'd-i vuslat'de Hisar'da sohbetin  
Şimdi bilmem kim harim-i ülfetin  
Yâdigârimde gönülda hasretin*

ARANAĞNESİ



Birkaç değişik notadan  
27.2.1995

Ömer Öz