

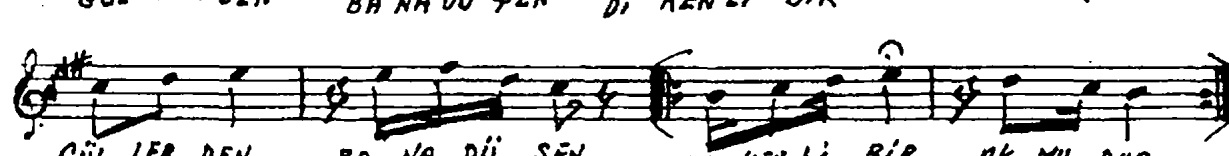
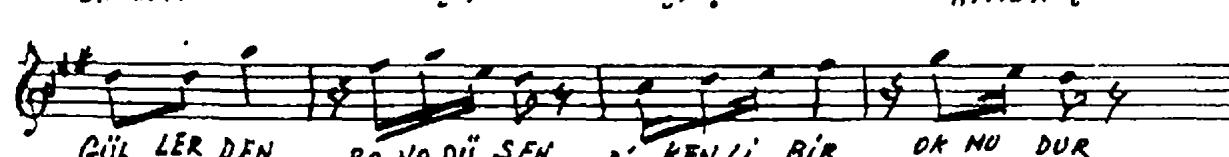
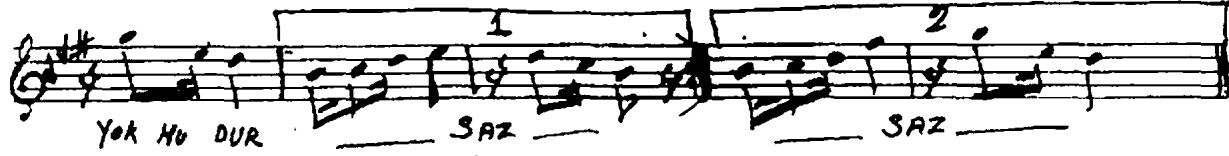
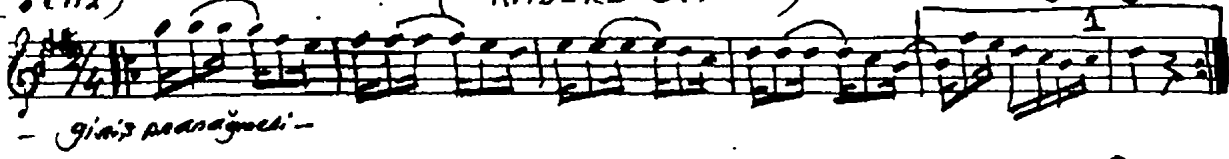
Himn Sofyası
(D. 112)

— SEGÂH ŞARKI —

Beste: Rüşti Eriç

(KADERE SITEM)

Söz: Sedat Ergintuğ



Derde dert katan kader
Sende insâf yokmudur?
Hicranmıdır nasibim
Bir gonca ten çokmudur?

Bahar kâmin içindir?
Çiçekler kime açar?
Güllerden bana düşen
Dikenli bir okmudur?

30.6.1992
Sedat Ergintuğ