

# SEGÂH ŞARKI

BU DERGÂHIN SİPRİ NEDİR BİLİNMEZ

DÜVEK

$\text{♩} = 164$

MÜZİK: SUPHİ İDRİSOĞLU

SÖZ: AYHAN İNAL



(SAZ . . . . .)

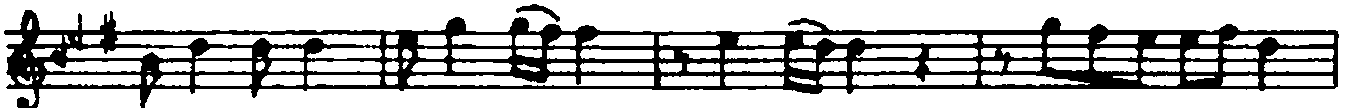
1. 2. 3.



1.



BU DER GÂ HIN SIR RI NE DİR Bİ LİN MEZ (SAZ . . . . .)



VE Lİ LE RİN HA Zİ NE Sİ BİZ DE DİR (SAZ . . . . .)



BUR DA DOST LUK E BE Dİ DİR Sİ LİN MEZ (SAZ . . . . .)



MU HAB BE TİN Dİ VÂ NE Sİ BİZ DE DİR (SAZ . . . . .) D.C.

2.



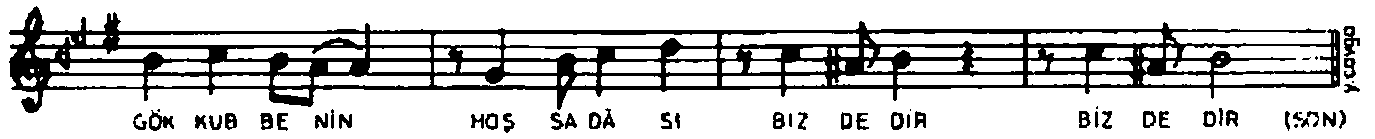
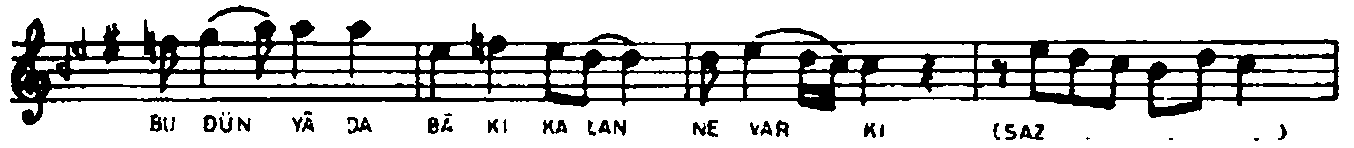
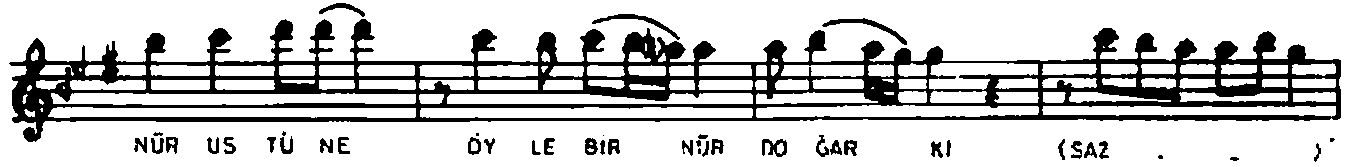
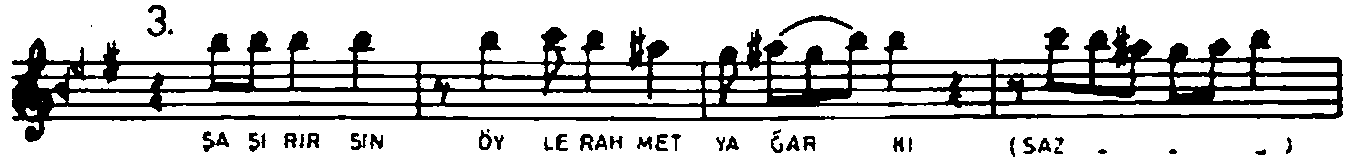
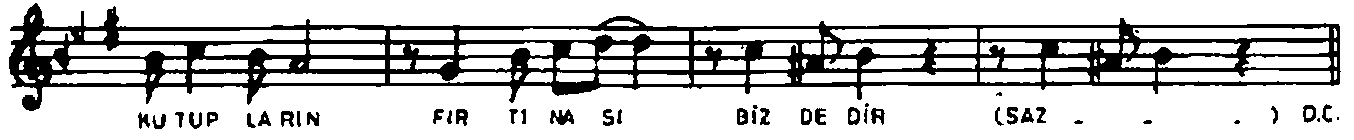
DÜN YÂ DA HER KE Sİ KARDEŞ BİL Mİ SİZ (SAZ . . . . .)



BU DER GÂ HA KO ŞA KO ŞA GEL Mİ ŞİZ (SAZ . . . . .)



DOST LAR MEC Lİ SİN DE CÜ ŞA GEL Mİ ŞİZ (SAZ . . . . .)



(RESTE TARİHİ: 10.12.1990 ADANA)

BU DERGÂHIN SIRRI NEDİR BİLİNMEZ  
VELİLERİN HAZİNESİ BİZDEDİR  
BURDA DOSTLUK EBEDİDİR SİLİNMEZ  
MUHABBETİN DİVÂNESİ BİZDEDİR

DUNYADA HERKESİ KARDEŞ BİLMİŞİZ  
BU DERGÂHA KOŞA KOŞA GELMİŞİZ  
DOSTLAR MECLİSİNDE CŪŞA GELMİŞİZ  
KUTUPLARIN FIRTINASI BİZDEDİR

ŞAŞIRIRSIN ÖYLE RAHMET YAĞARKI  
NŪR ÜSTUNE ÖYLE BİR NŪR DOĞARKI  
BU DŪNYADA BÂKI KALAN NE YARKI  
GÖK KUBBENİN HOŞ SADÂSI BİZDEDİR

AYHAN İNAL