

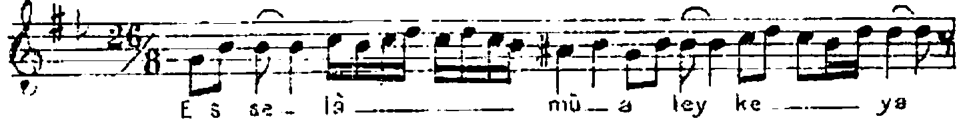
SEGÂH

İLÂHÎ

Güfte ve bestesinin sahipleri meçhuldür.

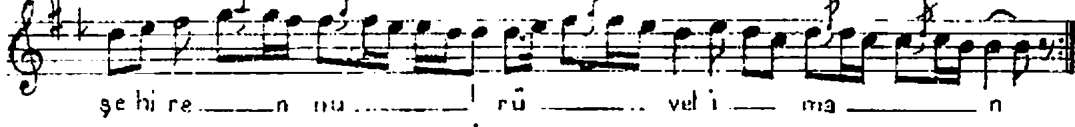
Esselâ (♩=112)

E s se lâ mü a ley ke ya



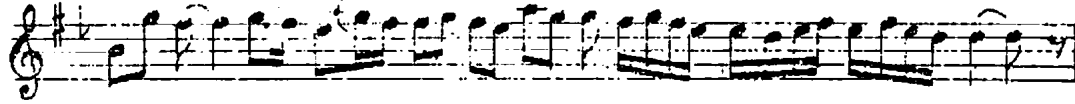
E s se - lâ mü - a ley ke - ya

şe hi re l i l u t f ü vel i h sâ n

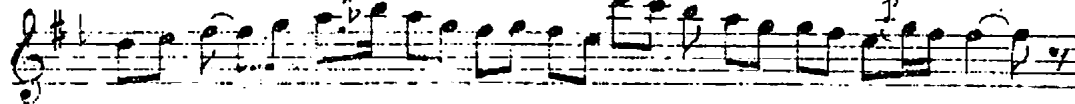


şe hi re n nu r ü vel i ma n

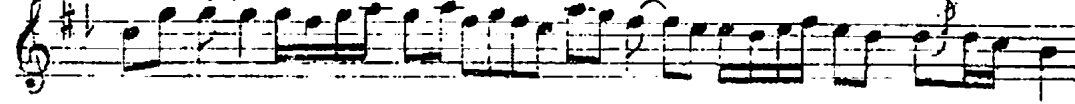
e n te şe h r ü n a zi mü n ün



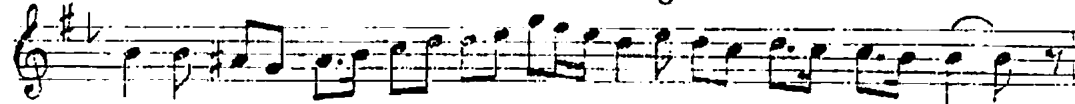
zi le fi kel ku r a n



e n te za y f ü n ke ri mü n vü



i de fi kel gu f ra n SÖN



*Esselâmü aleyke ya şehrel tutfü vel ihsan
Esselâmü aleyke ya şehren nurü vel iman
Ente şehrün azimün ünzile fikel kur'an
Ente zayfün kerimin suide fikel gufran*