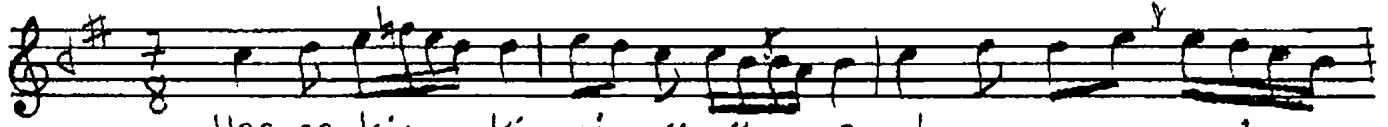


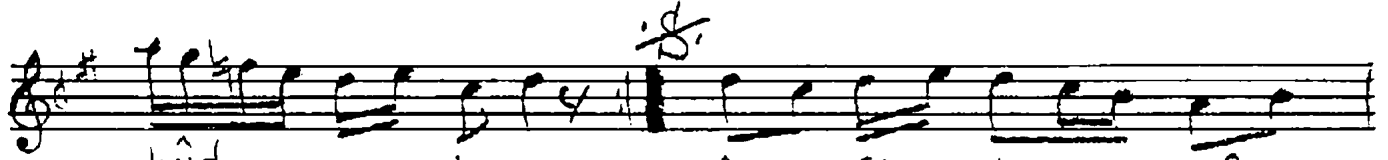
Devri Nindi.

REHÂUÎ ILÂHÎ  
(Her ne kim kişi görürse ...)

Beste: Eyyûbi Ali Rıza Bey  
Güfte:



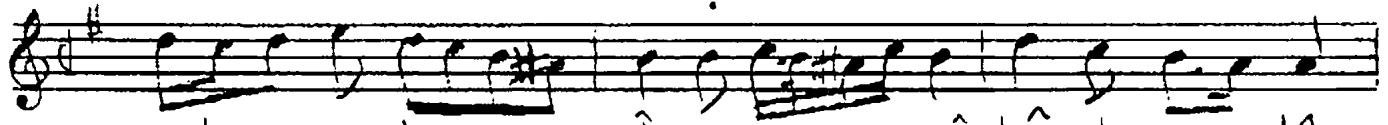
Her ne kim kişi görür se ol ana ma'



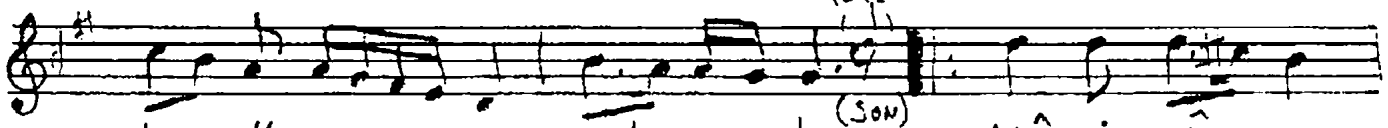
bûd o lur A şî kin mâ  
Def te ri uş



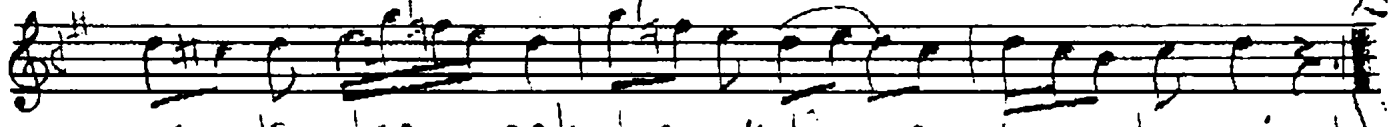
bu du mev lâ ken di si mes  
şak da a nin is mi na mev



ud o lur Â şî kin mâ bû du mev lâ  
cüd o lur Def te ri uş şak da a nin



ken di si mes ud o lur Mâ si vâ ya  
is mi nâ mev cüd o lur



mey le den aşk dan cüdâ o lur he min

Her ne kim kişi görürse ol ana ma'bud olur

Aşkın ma'budu mevâ, kendisi mes'ud olur

Mâsivaya meyleden aşkdan cüdâ olur hemin

Defter-i ussâle da anın ismi nâ mevcûd olur.