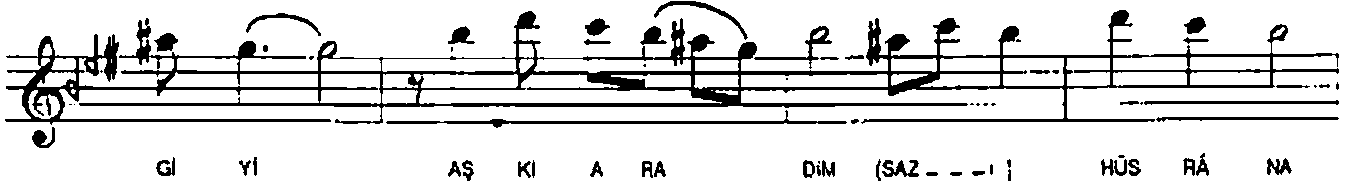
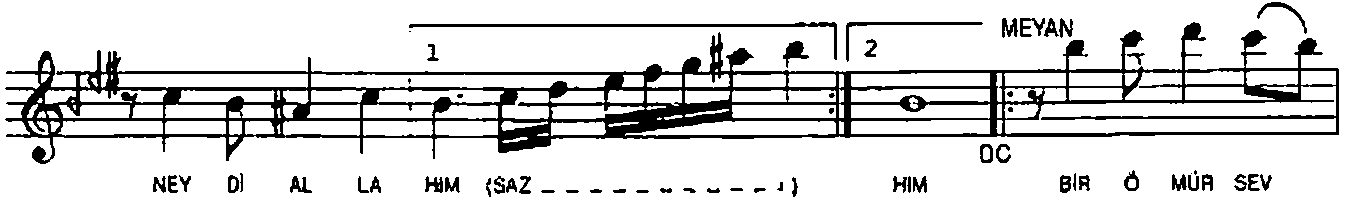
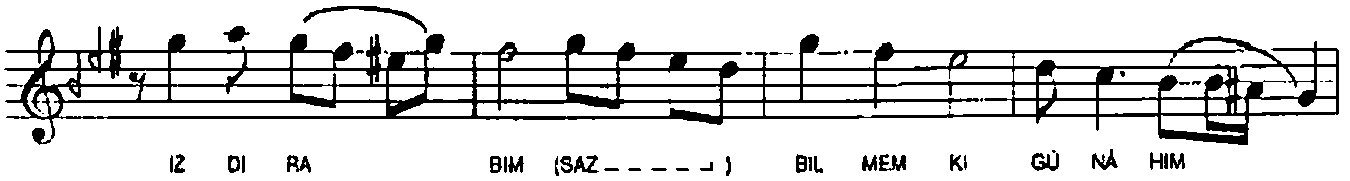
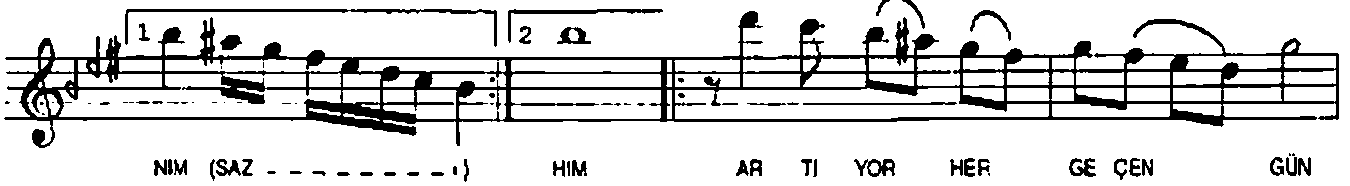
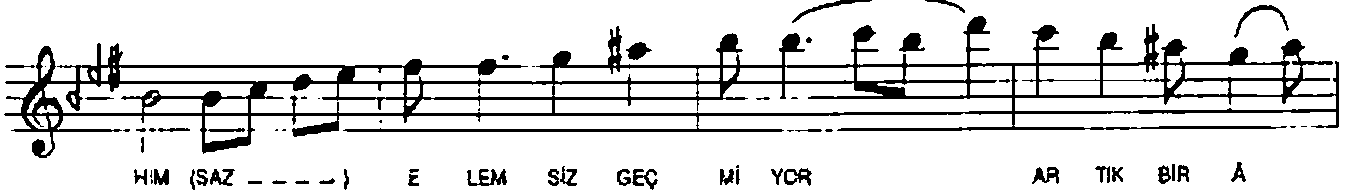
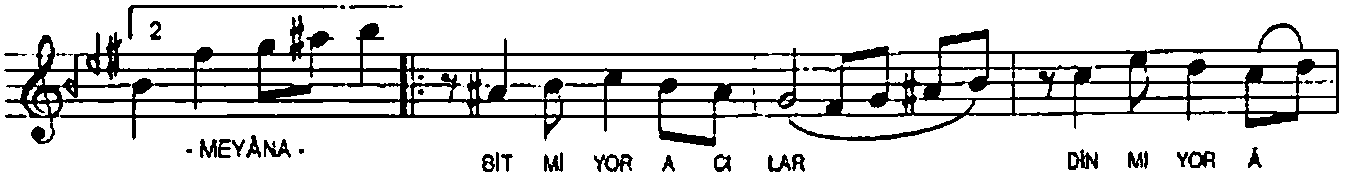


SEGÂH ŞARKI
BİTMIYOR ACILAR DİNMIYOR ÂHİM

USÛL : DÜYEK

SÛRE : ♩ = 192

MÛZİK : İLGÜN SOYSEV
SÖZ : ORHAN ALTINBAŞAK



SEGÂH ŞARKI
BİTMİYOR ACILAR DİNMIYOR ÂHİM
- 2 -

U LAŞ TI BÜ TÜN YOL LA RİM (SAZ - - - -) RİM (SAZ - - - -)

BAH TI KA RA LAR LA YA ZIL DI A DİM (SAZ - - - -)

BİL MEM Kİ GÜ NÂ HİM NEY Dİ AL LA HİM (SAZ - - - -)

HİM BİL MEM Kİ GÜ NÂ HİM NEY Dİ AL LA HİM SON

BİTMİYOR ACILAR DİNMIYOR ÂHİM
ELEMSİZ GEÇMİYOR ARTIK BİR ÂNİM
ARTIYOR HER GEÇEN GÜN İZDIRABİM
BİLMEM Kİ GÜNÂHİM NEYDİ ALLAHİM

BİR ÖMÜR SEVGİYİ AŞKI ARADİM
HÜSRANA ULAŞTI BÜTÜN YOLLARİM
BAHTI KARALARLA YAZILDI ADİM
BİLMEM Kİ GÜNÂHİM NEYDİ ALLAHİM