

SEGÂH ŞARKI

(CEKTIĞİM ACILARI TATMADI MECNÛN BİLE)

SEMÂİ

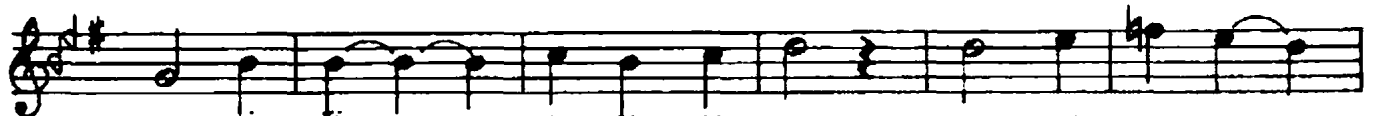
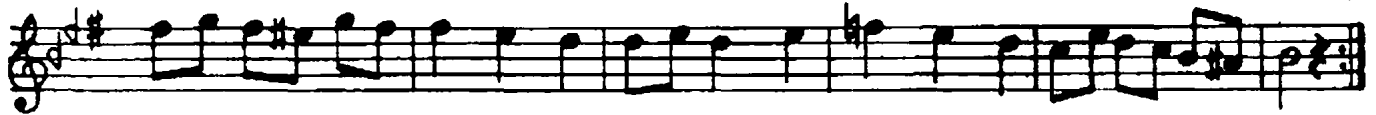
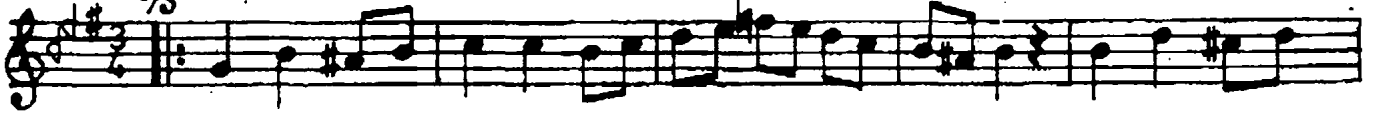
SÜRESİ : 3. 45"

♩ = 138

MÜZİK ve

SÖZ : ALÂEDDİN ŞENSOY

♩ (Giriş sözi.....)



CEK Tİ GİM A CI LA RI TAT MA DI MEC
MAH ZUN YU ZÜ MÜ A GÜL ÜR ÇOK UZ DÜN AR

(Saz.....)

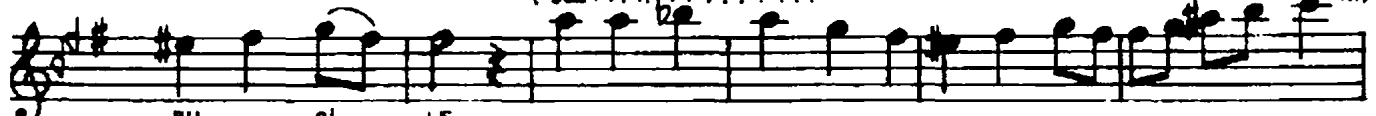


NUN Bİ LE
TIK YE TER



TA HAM MU LUM KAL MA DI BİT SİN AR TIK
HÜ ZÜN LE GE ÇEN OM RÜN YA RI NI DÜN

(Saz.....)



BU Cİ LE
DEN BE TER



DER Dİ Mİ AN LA TA MAM Kİ TAP LAR YAZ
HİC Mİ TÜ KEN ME YE CEK BU E LEM LER

(Saz.....)



SAM Bİ LE
BU KE DER



TA HAM MU LUM KAL MA DI BİT SİN AR TIK BU Cİ LE (SON)

www...