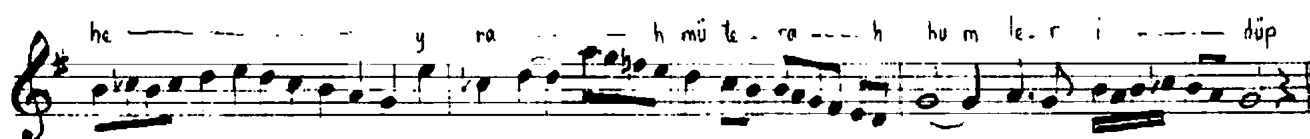
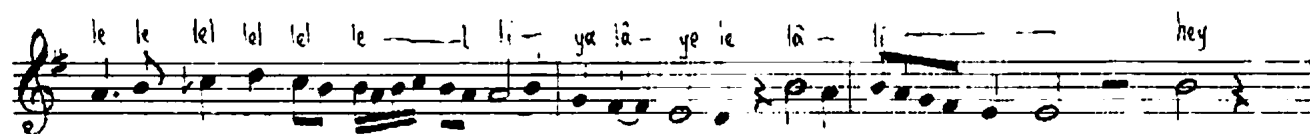
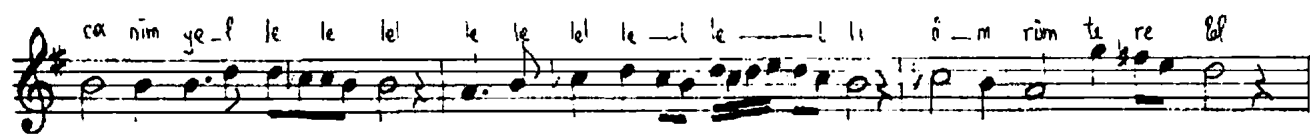
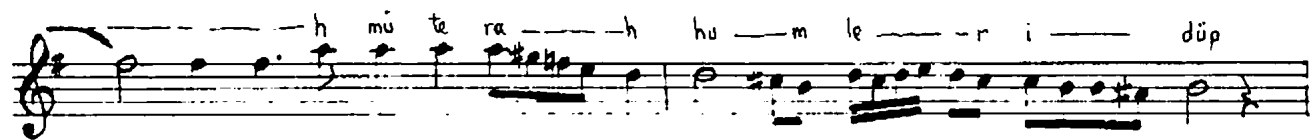
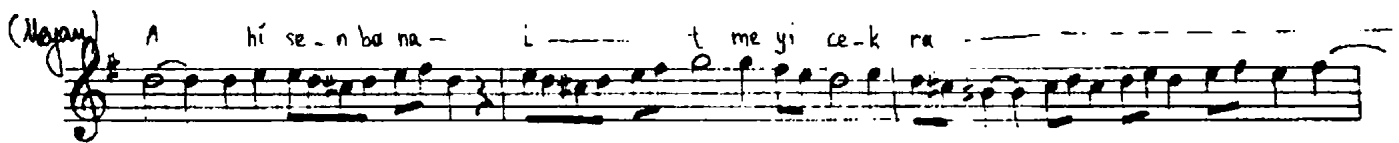
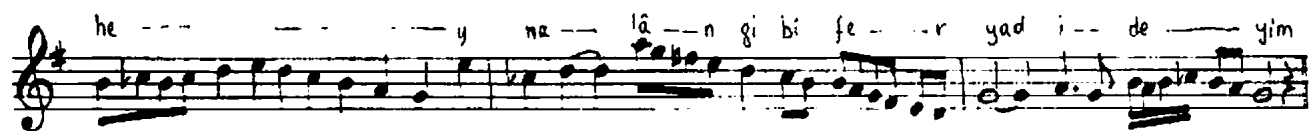
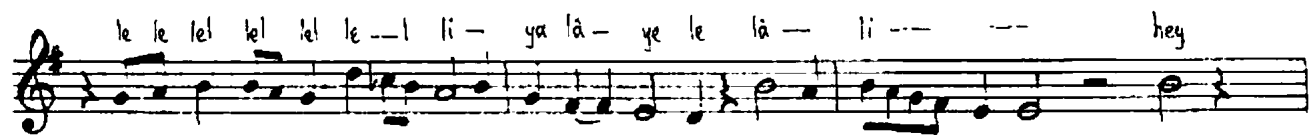
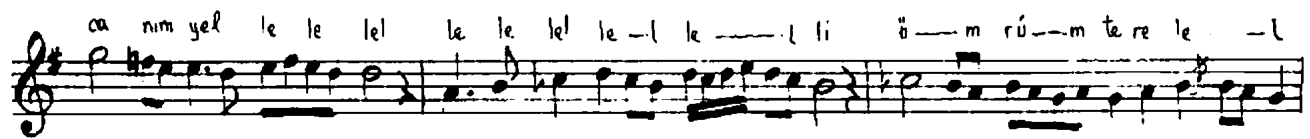
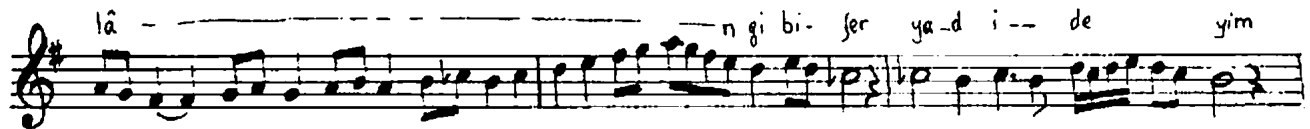
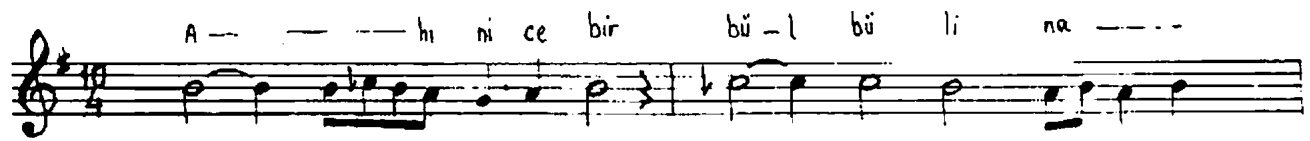


Sazkâr makamında ağır semâî  
İlyâ' nın

[2-100]



Nice bir bülbül-i nalân gibi feryad edeyim

Nice pervane gibi şem'i ruhın yad edeyim  
meyan

Sen bana itmeyicek rahm terahlühmler idüp

Senden ey şuhi cefa pişe kime dad edeyim

terennüm

Canım yel lele lel lele lel lel li  
ömrüm terc lele lel lele lel lel li

lele li ya lâ ye le lâ li hey hey

nalân gibi feryad edeyim