

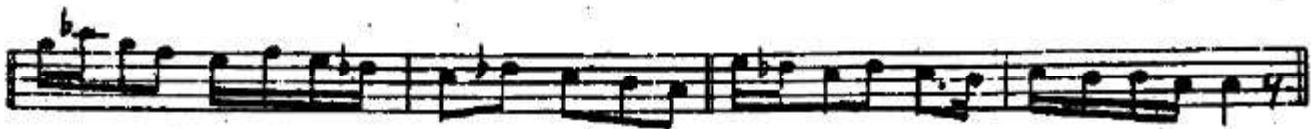
SAZ SEMAISI

FENNI B.

1 CI HANE



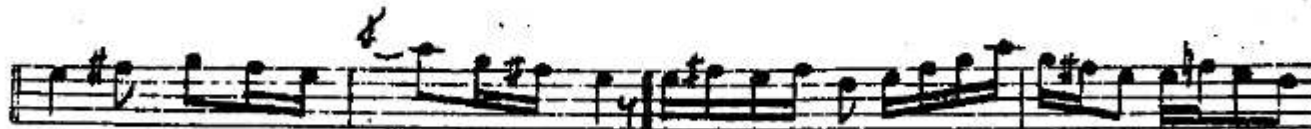
TESLİM



2 CI HANE



3 CÜ HANE



4 ou HAME

Musical notation for the piece '4 ou HAME'. It consists of four staves of music in 6/4 time. The first staff begins with a treble clef and a 6/4 time signature. The music features a melodic line with various intervals, including eighth and sixteenth notes, and rests. There are several slurs and accents throughout the piece. The key signature has one flat (B-flat).

VALS

Musical notation for the piece 'VALS'. It consists of eight staves of music in 6/8 time. The first staff begins with a treble clef and a 6/8 time signature. The music is characterized by a steady eighth-note rhythm. There are several slurs and accents throughout the piece. The key signature has one flat (B-flat). The piece concludes with a double bar line and a repeat sign.