



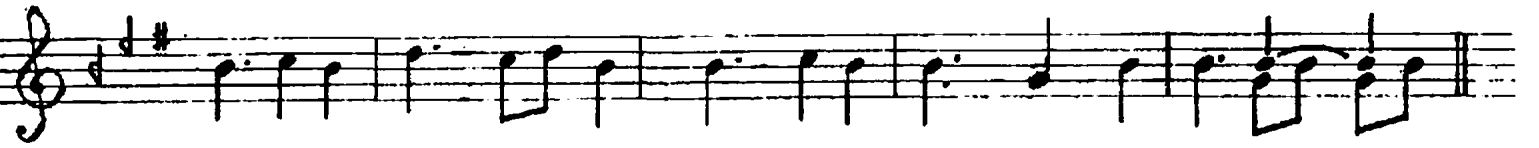
"SEGÂH SARKI"

DEVRLİ HİNDİ

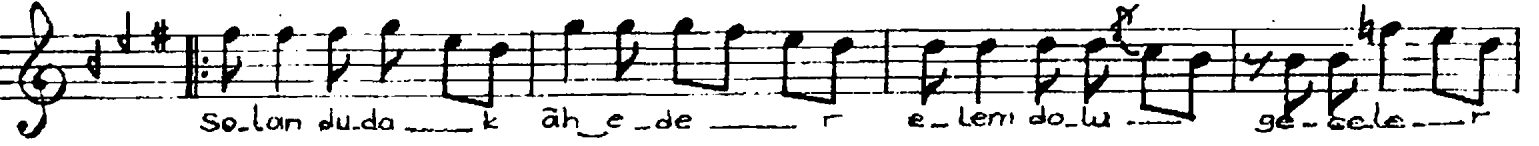
SİYAH BÖZDE BİN KEDER

GÜFTEVE Beste: Dr. SELÂHADDİN İÇ

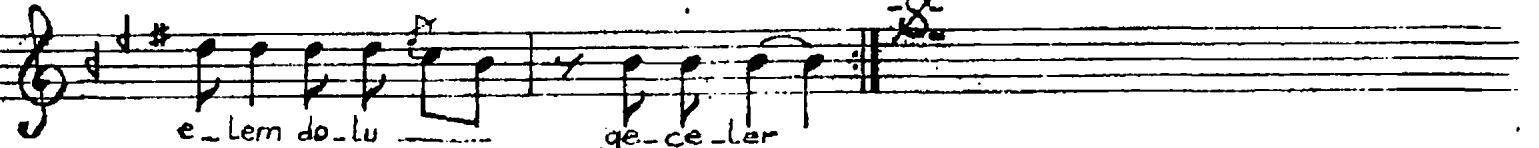
Aranağmesi



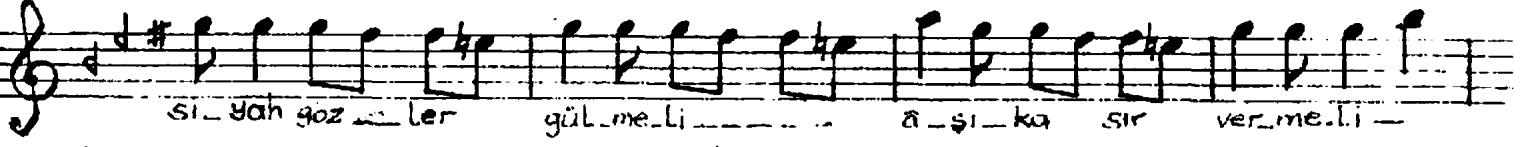
Si-yah göz-de bin ke-de-r pi-nar-lar-da in-ci-le-r



So-lan du-da k âh-e-de e-lem do-lu ge-ce-le-r



e-lem do-lu ge-ce-ler



si-yah göz-ler gül-me-li â-şı-ka sır ver-me-li



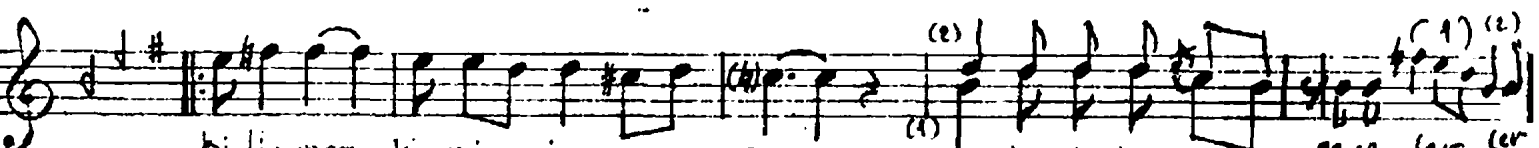
sev-me-li âh sev-me-li bü-se do-lu ge-ce-ler



bü-se do-lu ge-ce-ler



aş-ki tek bi-len-sin sen sı-ne-de a-lev-sin seni



bi-lin-mez ki-min-sin sen şip-he do-lu ge-ce-ler (1) (2) ge-ce