

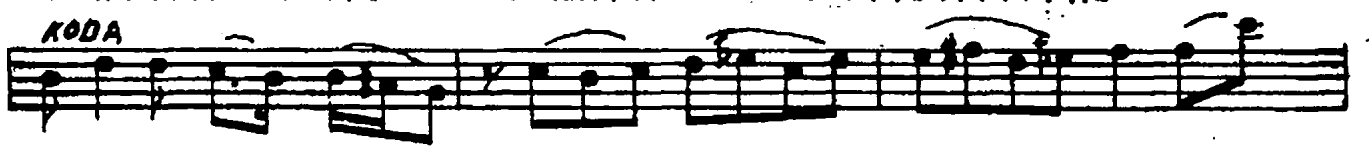
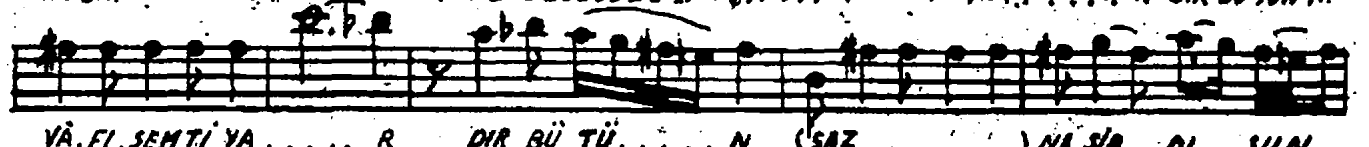
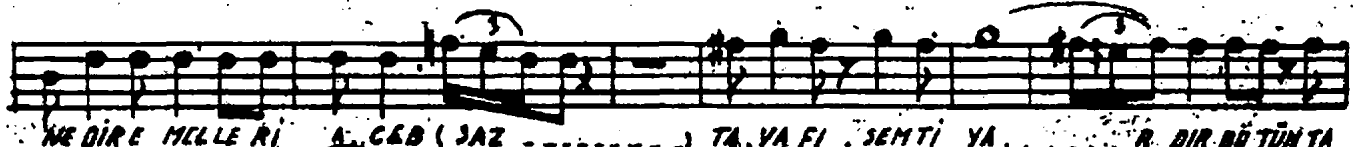
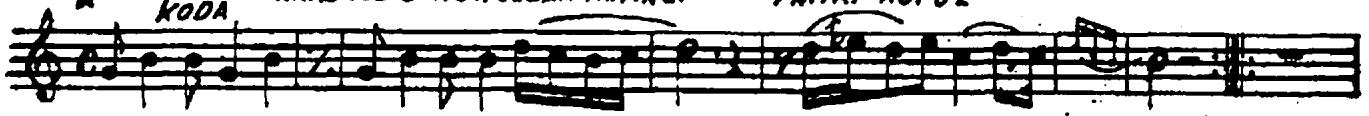
DÜYEK

# ZAVALLI GÖNLÜM

ARAB ÜSLUBUNDA SEBÂH FANTAZİ

FÂHİRİ KOPUZ

1924 HAZİRAN A. HISAB



\* UZUN ESİR DÜYEK TEMPOSI İLE DOLDURULMALIDIR

ZAVALLI GÖNLÜMÜN YİNE ACIKLI BİR MELÂLİ VAR  
NE DENNİ NİÇİN YİN NE OLDU ?  
NE BİR NEFES KARÂRİ VAR NE SABRİN İHTİMÂLİ VAR

BÜTÜNEMELLERİ  
NE DİRE MELLERİ ACEB ?  
TAVÂFİ SEPTİ YÂRDİR BÜTÜN  
NASİB OLSUN VİSAL BİT SİN ARTIK MELÂL