

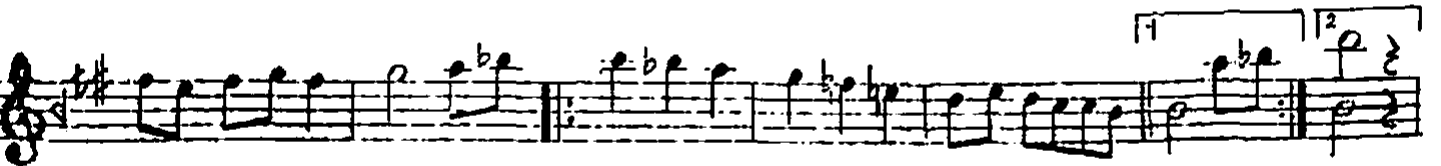
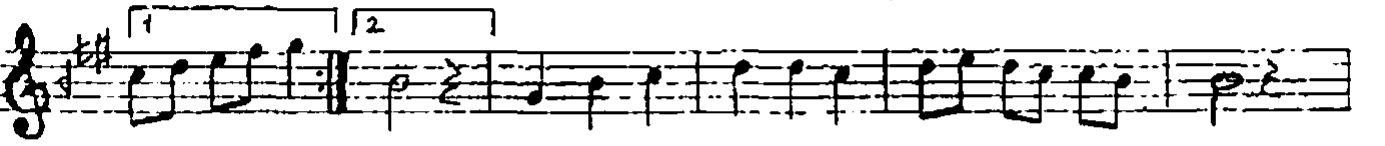
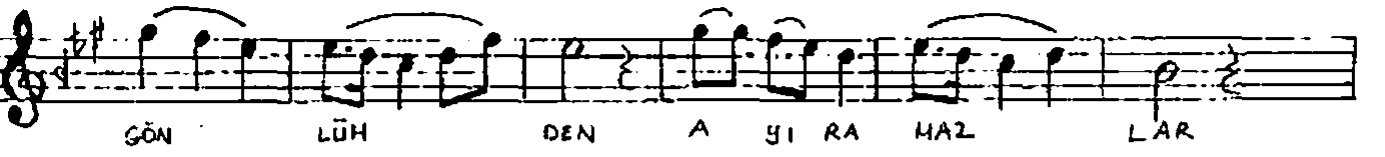
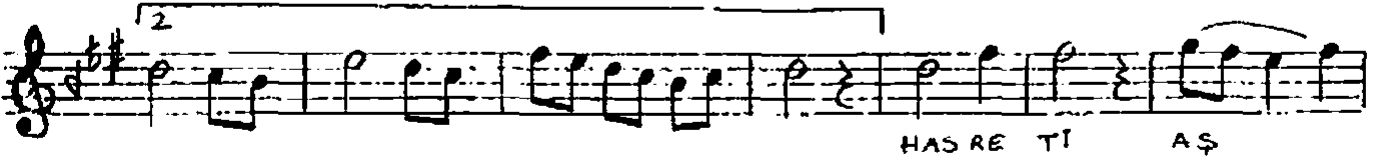
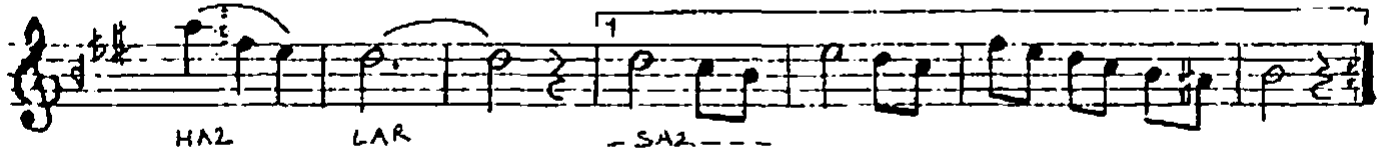
Süre: 3'05"

SECÂH ŞARKI
-RUHLARI ANLAŞAN, KALPLERİ SEVEN-

♩ = 160

USÛLU: SEMÂÎ

MÜZİK: SÜLEYMAN HERTKANLY
SÖZ : EKREM BOLU



İS TER SE SAÇ LA RİH AK LAR LA

DOL SUN İS TER SE BU SEV DA

Ö LÜ HÜH OL SUN -SAZ -

FADEMLİ

RUHLARI ANLAŞAN KALPLERİ SEVEN
BÜLBÜLÜ GÜLÜNDEN AYIRAMAZLAR
HASRETİ AŞKINLA YANSADA SİNEM
SENİ ŞU GÖNLÜNDEN AYIRAMAZLAR

İSTERSE HASRETİM ELEMİM OLSUN
İSTERSE SAÇLAKIM AKLARLA DOLSUN
İSTERSE BU SEVDÂ ÖLÜMÜM OLSUN
SENİ ŞU GÖNLÜNDEN AYIRAMAZLAR