

SEGÂH

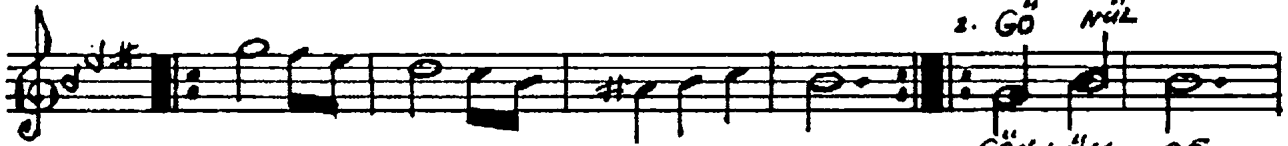
GÖNLÜMCE VERMEYEN BANTI NEYLEYİM

♩ = 108

SÖZ: SEYFİ GÜLDAGI

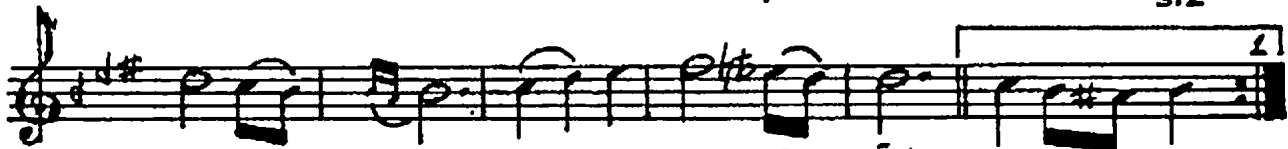
MÜZİK: İSMAİL DEMİRKIRAN

SEMAİ



3. SEY DA  
2. GÖ NÜL

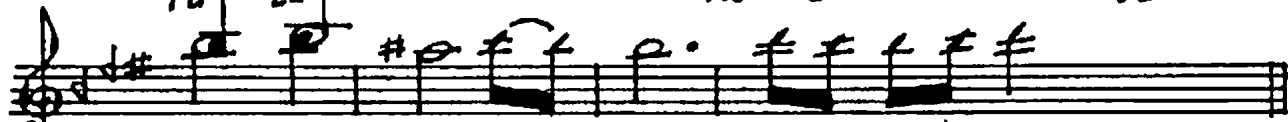
GÖNLÜM CE  
DEN  
SİZ



VER ME YEN BAH TI NEY LE YİM  
BİL ME YEN GÖN LÜ NEY LE YİM  
SES VE REN SA ZI NEY LE YİM

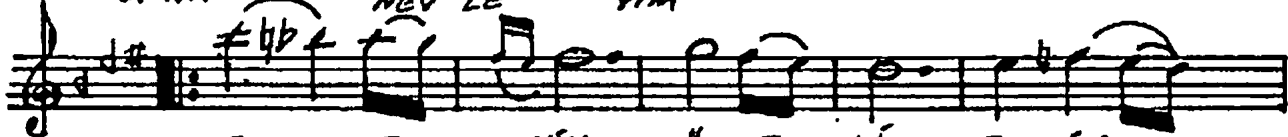


SUL TA NI GEL ME YEN  
MI SAR MA YAN  
ME ZUL ME DEN

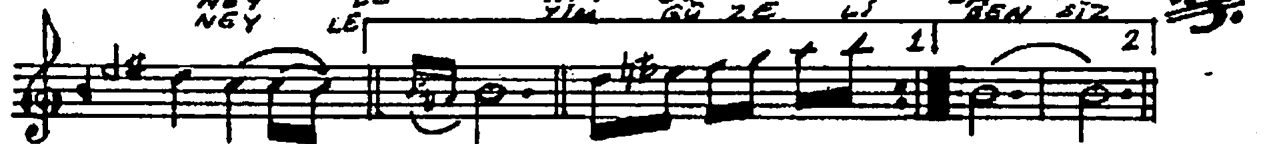


TAH TI NEY LE YİM (SAZ...)

3. NA ZI NEY LE YİM  
NEY LE YİM



NEY LE YİM GÜ ZE Lİ E LİN  
NEY LE YİM GÜ ZE Lİ ZA LİM  
NEY LE YİM GÜ ZE Lİ REN SİZ



O LUN CA CA  
O LUN CA CA  
O LUN CA CA

GÖNLÜMCE VERMEYEN  
BANTI NEYLEYİM  
SULTANI GELMEYEN  
TANTI NEYLEYİM  
NEYLEYİM GÜZELİ  
ELİN OLUNCA

GÖNÜLDEN BİLMEYEN  
GÖNLÜ NEYLEYİM  
YARANI SARMAYAN  
TÜLÜ NEYLEYİM  
NEYLEYİM GÜZELİ  
ZALİM OLUNCA

SEVDİSİZ SES VEREN  
SAZI NEYLEYİM  
GÖNLÜME ZULMEDEN  
NAZİ NEYLEYİM  
NEYLEYİM GÜZELİ  
BENSİZ OLUNCA

14-10-1984-ADANA