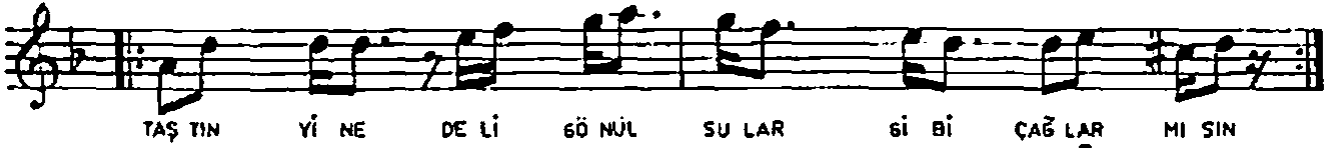
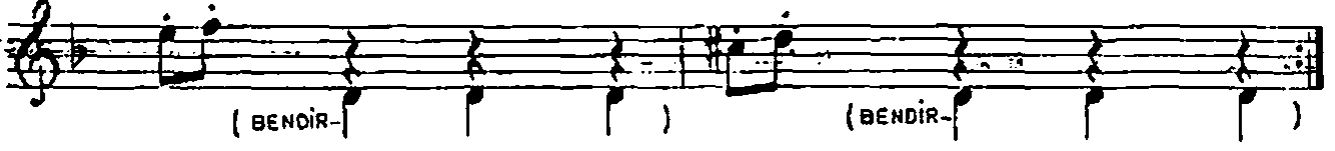
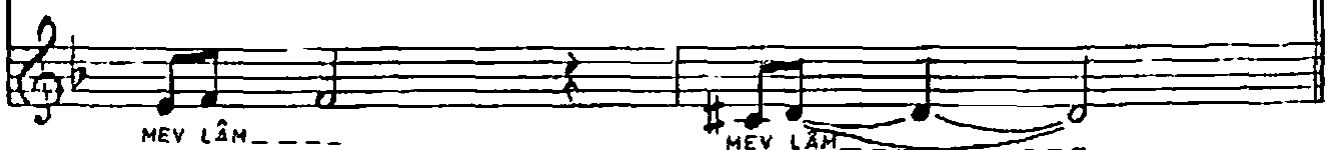
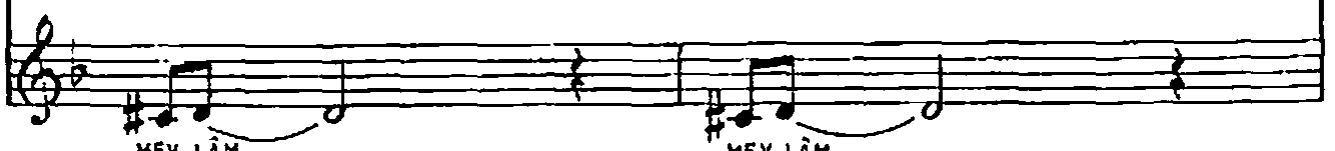
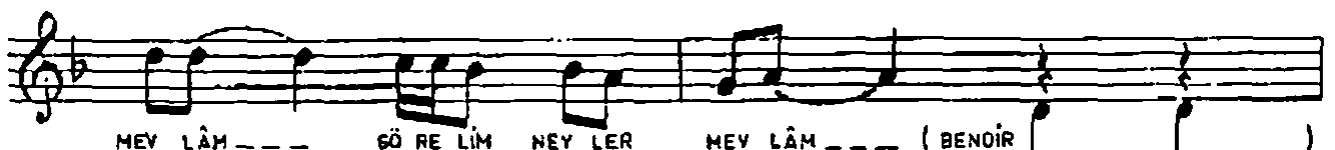
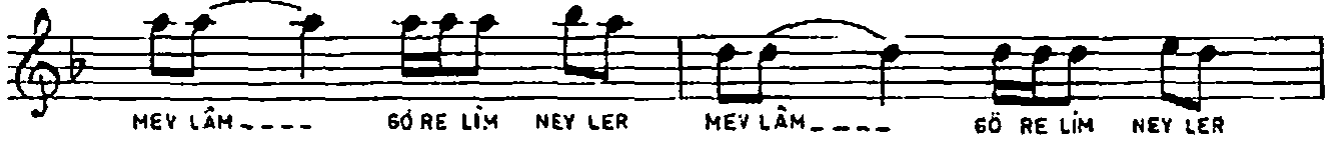


(♩ = 64)

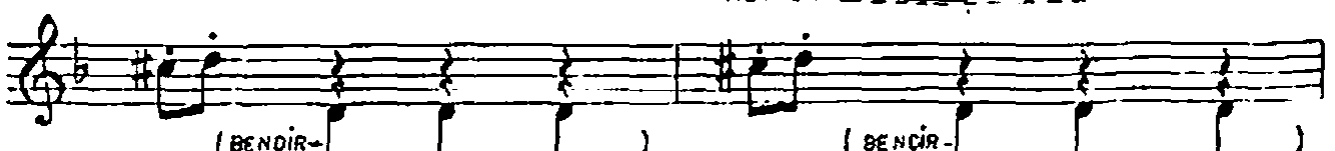
(A)



(B)



(C)



(BENDİR-) (BENDİR-)

(BENDİR-)

(BENDİR-)

(BENDİR-)

(B) MEV LÂM --- GÖ RE LİM NEY LER MEV LÂM --- GÖ RE LİM NEY LER

(BENDİR)

SCPRANO TENOR MEV LÂM --- MEV LÂM ---

ALTO BARİTON BAS MEV LÂM --- MEV LÂM ---

SOPRANO TENOR MEV LÂM --- MEV LÂM ---

ALTO BARİTON BAS MEV LÂM --- MEV LÂM ---

(D) (BENDİR) (BENDİR)

(BENDİR-) (BENDİR-)