

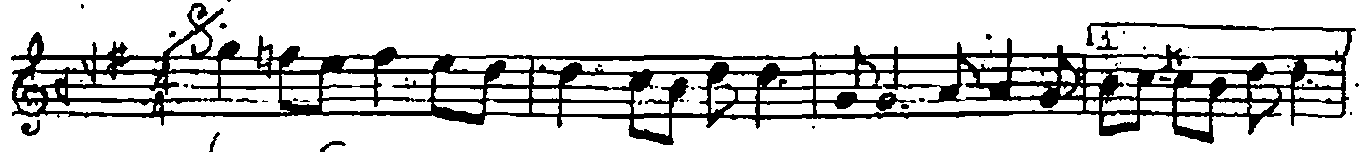
# SEGÂH İLÂHİ

( Kime gönül verir isem benim ile yar olma di )

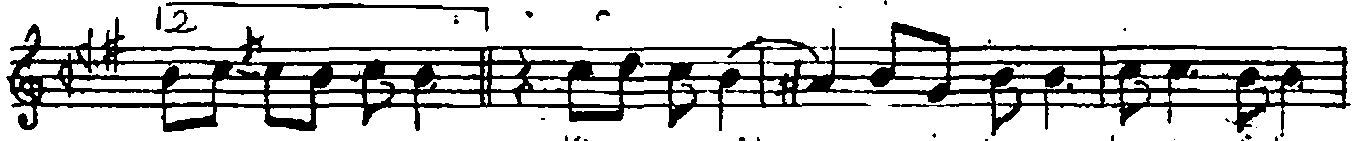
Süre: 3'50"

Usûlü: Sofyan

MÜZİK: Osman Nuri ÖZPEKEL  
SÖZ: Yunus EMRE



(... Saz



Ki me gö nül ve rir i sem be nim i le



yar ol ma di ki me gö nül ve rir i sem be nim i le yar ol ma di



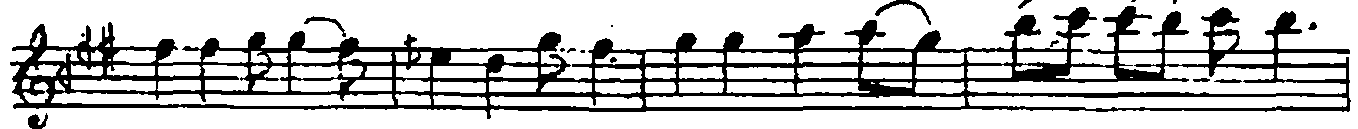
(... saz .....) Ha lim bi lip der dim so rup



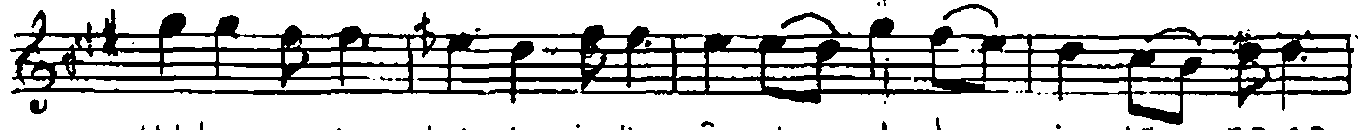
ba na ve fâ aar ol ma di ha lim bi lip der dim so rup



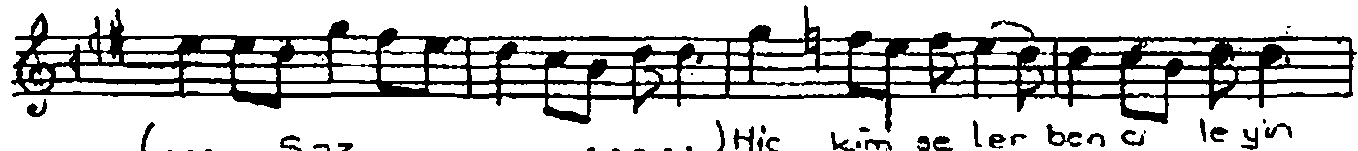
ba na ve fâ aar ol ma di (... Saz



Hak tan me ger tak dir i di â şık ol du gön lüm so na



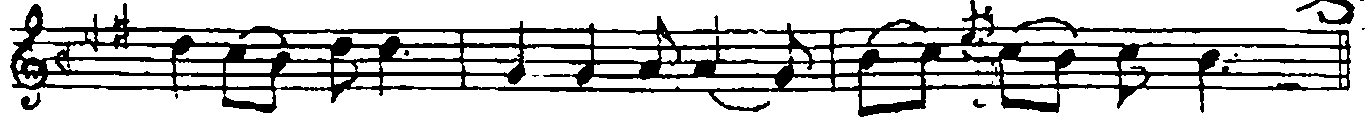
Hak tan me ger tak dir i di â şık ol du gön lüm so na



(... Saz .....) Hiç kim se ler ben ci le yin



âs ka gi rif tar ol ma di hiç kim se ler



ben ci le yin as ka gi rif tar ol ma di



Hak ya rat ti ye ri gö gü ol Ah me din dost lu gu na



Hak ya rat ti ye ri gö gü ol Ah me din dost lu gu na



(... Saz ...) lev lak o na de lül ol du



Or suz yer gök var ol ma di lev lak o na de lül ol du



Or suz yer gök var ol ma di (... Saz ...)



Ask ta ka hir lar cök ol ur â şik lar na gay ret ge rek



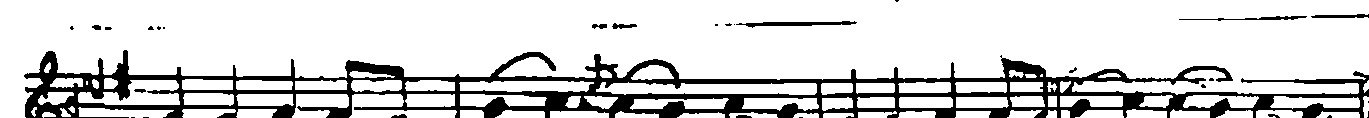
Ask ta ka hir lar cök ol ur â şik lar na gay ret ge rek



(... Saz ...) Yu nus â şik ol dun i se



â şik lar da â r ol ma di Yu nus â şik ol dun i se



â şik lar da â r ol ma di â şik lar da â r ol ma di

Handwritten signature or mark