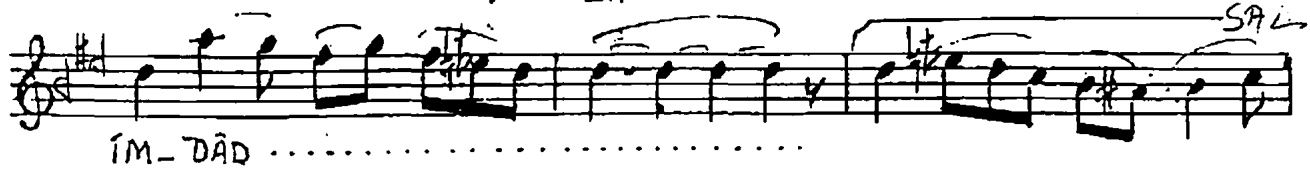
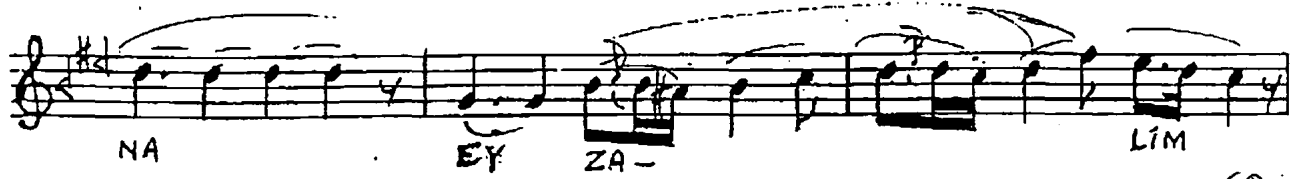


A. Y (♩=104)
CURCUNA

SEGÂH ŞARKI

Beste: ALÂEDDİN YAVAŞÇA

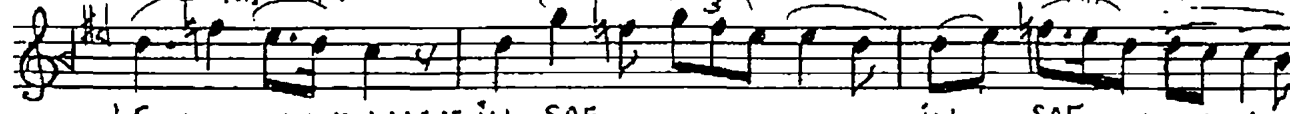
Güfte: DÜRDANE ALTAN



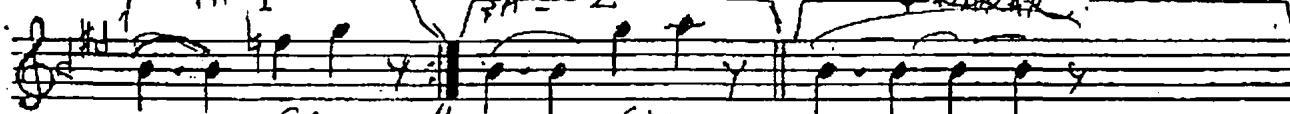
ME-CÂ-LİM.....KAL-MA-DI..... AR-TİK
BE-NİM SEN-SİN TA-Bİ-BİM GER-ÇEK



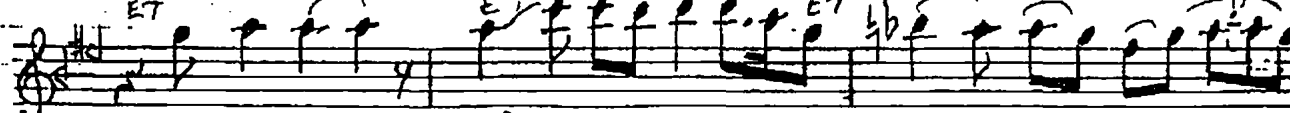
TA-Bİ-BİM GEL MÜ-RÜV-VET EY-
EENÂ-NİM 2 3 Dİ-Lİ NÂ-LÂ-....



LE.....İN-SAF İN-SAF
NI İMİ ŞÂ-2 SÂZARAR



ET SÂZ ET SÂZ ET.....



U-NUL-MAZ YÂ-RE-ME EL.....



VUR Şİ-FA SUN SUN BİR Nİ-GÂ-



HİN - LA

BESTE TARİHİ 29.10.1987 VIŞNEZÂDE