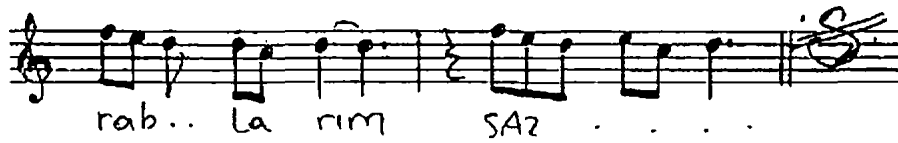
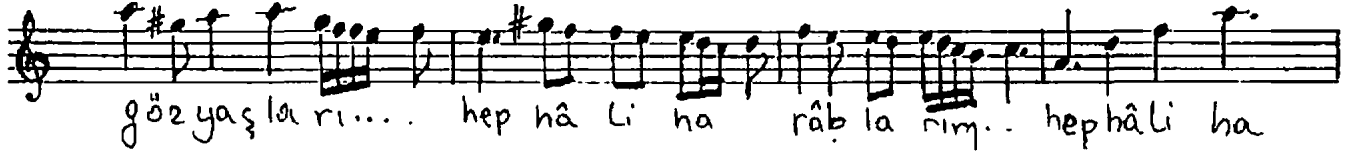
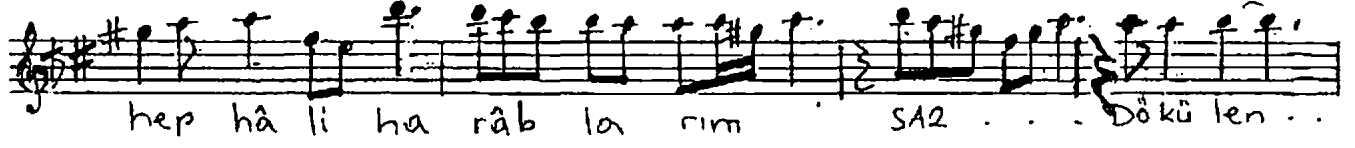
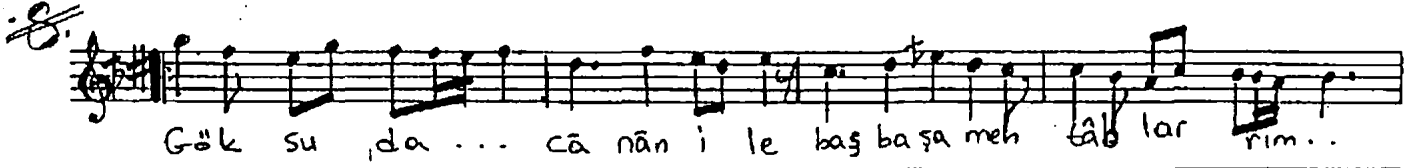


SULTÂNÎ YEGÂH ŞARKI  
İçimde hasreti var o âlemi âblarım

Söz ve Müzik  
AHMET UZEL

♩: 180  
Circuna



~~İçimde hasreti var o âlemi âblarım~~  
~~Göksüda cānân ile başbaşa mehtâb'larım~~  
~~Dökülen gözyaşları hep hâl-i harâhlarım~~  
~~Göksüda cānân ile başbaşa mehtâb'larım~~