

Sultaniyegâh Şarkı

(Bahçemde çemen gözlerinin rengine benzer)

♩ = 54

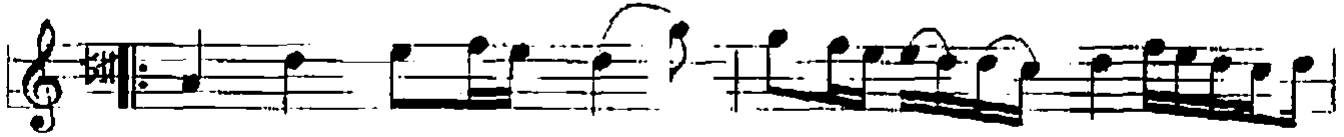
Usûl Aksak

Güfle: Yasin Hatipoğlu

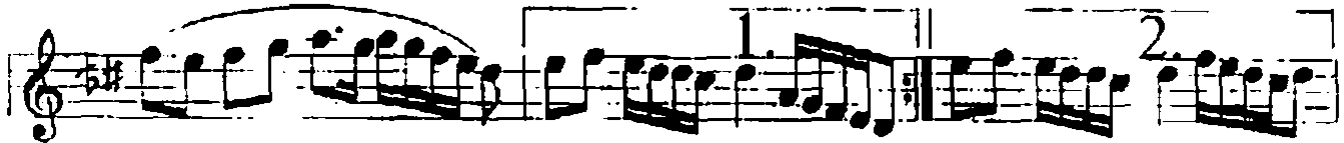
Beste: Yılmaz Karakoyunlu



Aranmağme.....



Bah çem ile çe men... göz... le ri nin (Saz.....)



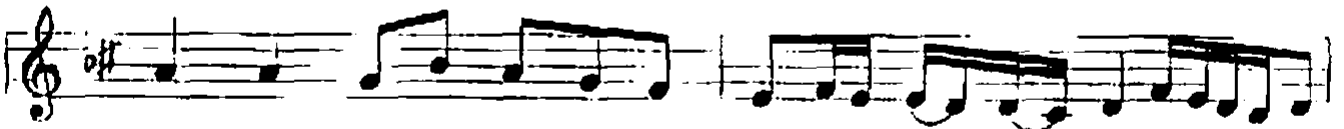
ren gi ne ben ... zer (Saz) gi ne ben zer (Saz ..)



① Em. sal go re men hüs nu ne yok.....
② Nab zım bi le sey rin de ki â

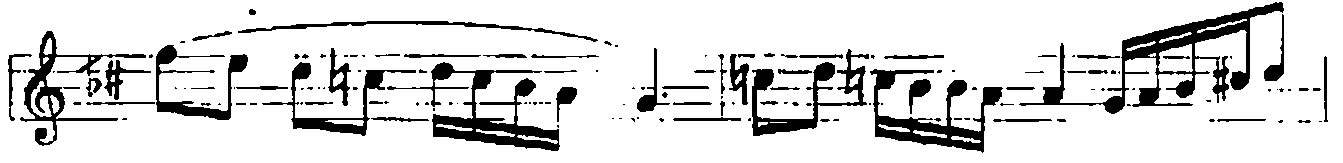


den gi ne ben. zer (Saz ..) gi ne ben .. zer (Saz ..)
hen gi ne ben... zer (Saz ..) gi ne hen .. zer (Saz.....)

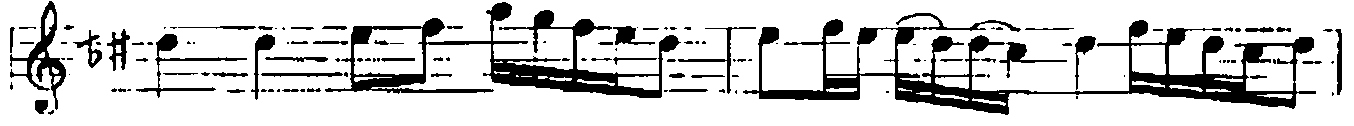


Kal him sa na ram ol... du gu zef (Saz ..)

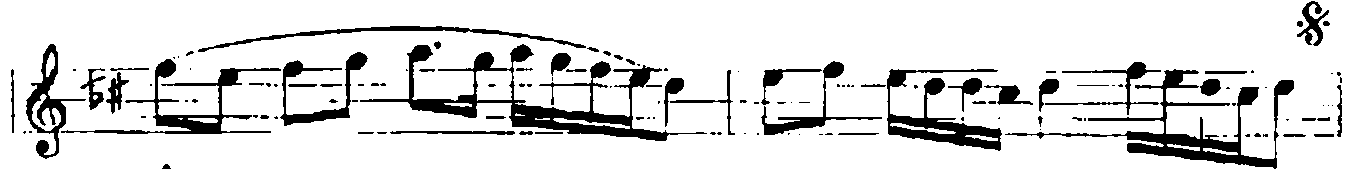
Sultaniyegâh Şarkının Devamı: 2



rû hu ma gir din (Saz)



Kal bim sa na râm..... ol du gü zel (Saz)



rû..... hu ma gir din (Saz)



gi ne ben. zer

Sultaniyegâh Şarkı

YAYINLANIR

Bahçemde çemen gözlerinin rengine benzer.
Emsal göremem hüsnüne; yok, dengine benzer.
Kalbim sana râm oldu güzel, rûhuma girdi;
Nabzım bile seyrindeki âhengine benzer.

Vezin: Mefûlî / Mefûlî / Mefûlî / Fefûlün